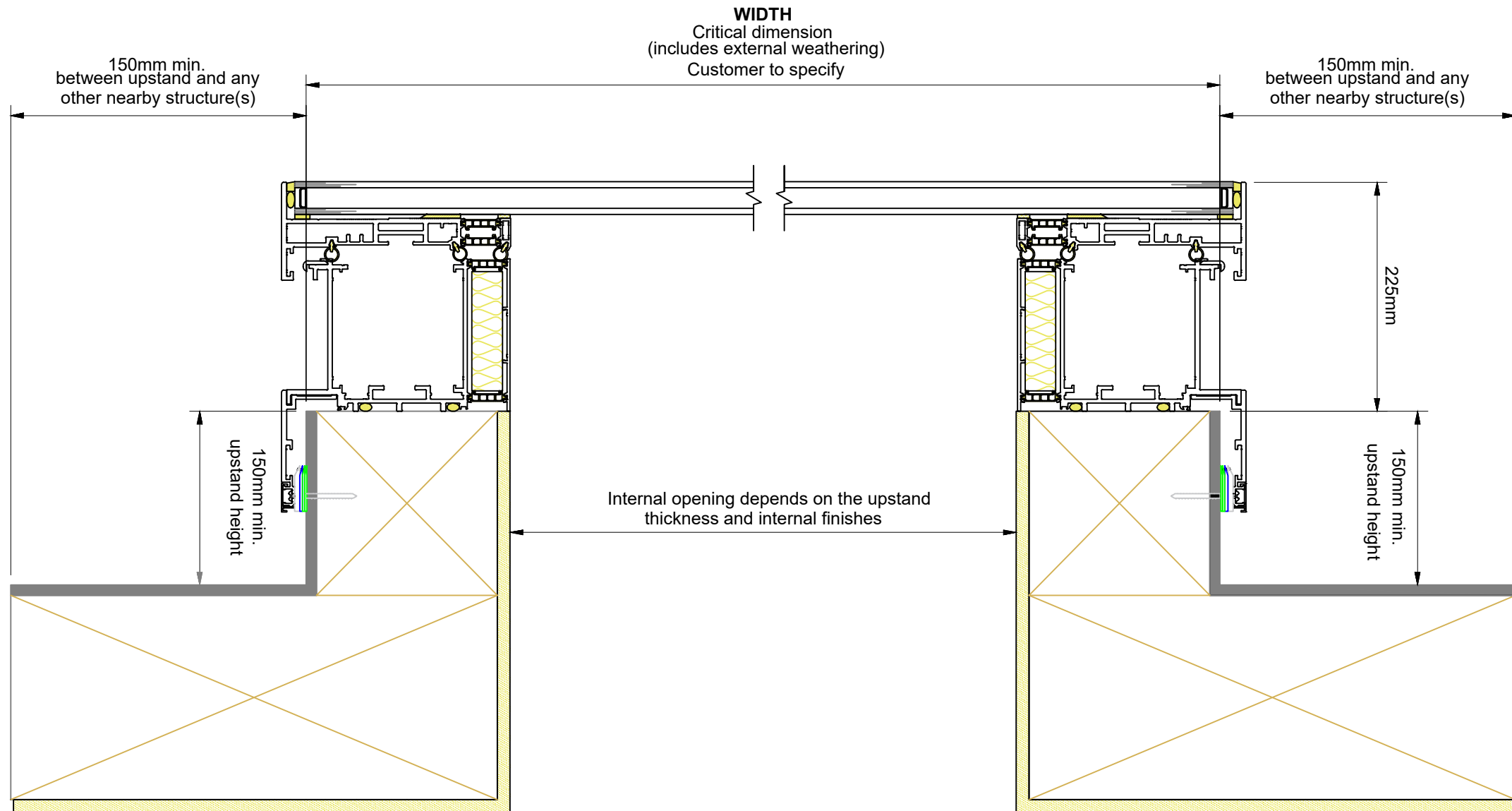


Section Across the Fall



Refer to 406-SDD-UK-508
and 100-SDD-UK-001 for
detailed upstand information

**GLAZING
VISION**

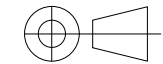
☎: +44 (0)1379 658 300 🌐: www.glazingvision.co.uk
✉: sales@glazingvision.co.uk

IT IS GLAZING VISION'S POLICY TO CONTINUOUSLY DEVELOP AND IMPROVE OUR PRODUCTS. WE THEREFORE RESERVE THE RIGHT TO MODIFY OR CHANGE THE DETAIL DESIGN AT OUR DISCRETION AND WITHOUT PRIOR NOTICE.

THIS DRAWING IS COPYRIGHT AND THE SOLE PROPERTY OF GLAZING VISION INC. THE DESIGNS / INFORMATION IT CONTAINS ARE PRIVATE AND CONFIDENTIAL. IT MUST NOT BE COPIED, EXHIBITED OR COMMUNICATED TO THIRD PARTIES FOR ANY PURPOSE OTHER THAN THAT FOR WHICH IT WAS ISSUED WITHOUT THE WRITTEN PERMISSION OF GLAZING VISION INC.

ALL DIMENSIONS IN mm UNLESS OTHERWISE STATED

UPSTAND TO BE CONSTRUCTED TO WITHIN $\pm 10\text{mm}$ ON STRAIGHT & $\pm 12\text{mm}$ ON DIAGONAL DESIGNED SIZES. WEATHERING BY OTHERS.



Third angle projection unless otherwise stated

THIS IS A STANDARD DRAWING, THE UNIT PURCHASED MAY VARY. THIS DRAWING DOES NOT INDICATE ACCURATE DIMENSIONS FOR ANY EXISTING STRUCTURAL COMPONENTS OR PRODUCTS.

DO NOT USE THIS DRAWING FOR ANY SITE LAYOUTS. ON-SITE PERSONNEL ARE RESPONSIBLE TO CONFIRM DRAWINGS VS SPECIFIC SITE CONDITIONS.

ESTIMATED WEIGHT N/A	SCALE Not to scale <small>(UNLESS OTHERWISE STATED)</small>
-------------------------	---

REVISION	DESCRIPTION	NAME/DATE
-	Initial Release	SS 7/Aug/2023

PROJECT
406 GV Standard Skydoor2

TITLE / DESCRIPTION Section across the fall	CHECKED AB
--	---------------

DRAWING NO. 406-SDD-UK-504	SHEET 1 OF 1
-------------------------------	-----------------