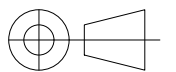


IT IS GLAZING VISION'S POLICY TO CONTINUOUSLY DEVELOP AND IMPROVE OUR PRODUCTS. WE THEREFORE RESERVE THE RIGHT TO MODIFY OR CHANGE THE DETAIL DESIGN AT OUR DISCRETION AND WITHOUT PRIOR NOTICE.

THIS DRAWING IS COPYRIGHT AND THE SOLE PROPERTY OF GLAZING VISION LTD. THE DESIGNS / INFORMATION IT CONTAINS ARE PRIVATE AND CONFIDENTIAL. IT MUST NOT BE COPIED, EXHIBITED OR COMMUNICATED TO THIRD PARTIES FOR ANY PURPOSE OTHER THAN THAT FOR WHICH IT WAS ISSUED WITHOUT THE WRITTEN PERMISSION OF GLAZING VISION LTD.

ALL DIMENSIONS IN mm UNLESS OTHERWISE STATED

UPSTAND TO BE CONSTRUCTED TO WITHIN ± 10 mm ON STRAIGHT & ± 12 mm ON DIAGONAL DESIGNED SIZES. WEATHERING BY OTHERS.



Third angle projection unless otherwise stated

THIS IS A STANDARD DRAWING, THE UNIT PURCHASED MAY VARY. THIS DRAWING DOES NOT INDICATE ACCURATE DIMENSIONS FOR ANY EXISTING STRUCTURAL COMPONENTS OR PRODUCTS.

DO NOT USE THIS DRAWING FOR ANY SITE LAYOUTS. ON-SITE PERSONNEL ARE RESPONSIBLE TO CONFIRM DRAWINGS VS SPECIFIC SITE CONDITIONS.

ESTIMATED WEIGHT	N/A	SCALE	Not to scale
------------------	-----	-------	--------------

REVISION	DESCRIPTION	NAME/DATE
----------	-------------	-----------

-	Initial Release	JSL 26 May 2022
---	-----------------	--------------------

A	Fin updated to cover all standard sizes	RJ 29 Jun 2022
---	---	-------------------

B	Additional dimensions added	JME 14 Dec 2022
---	-----------------------------	--------------------

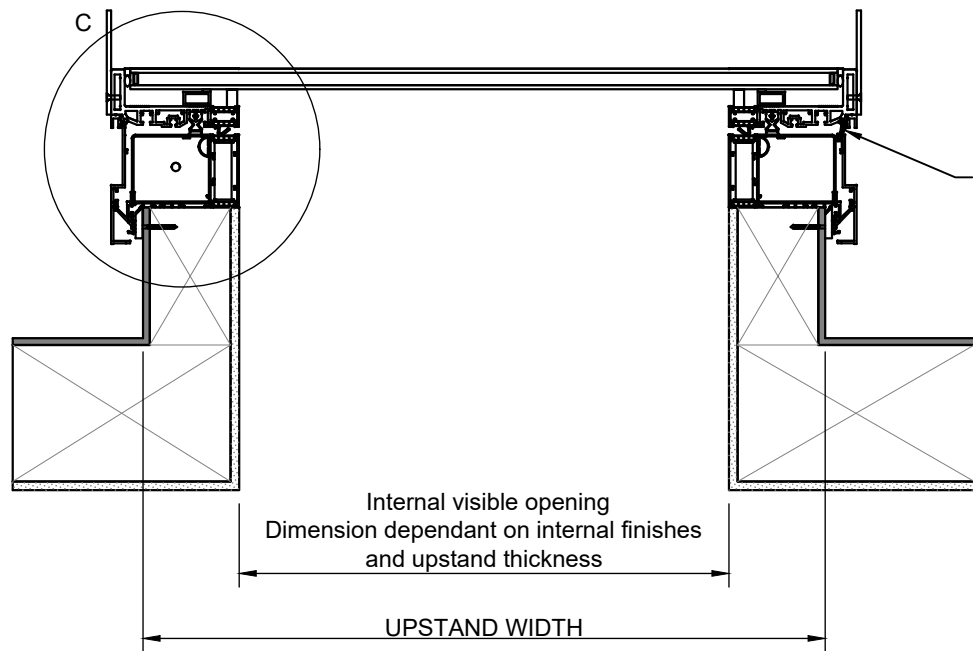
C	Additional dimensions added for the Fin	VA 28 Nov 2023
---	---	-------------------

PROJECT
Sliding Over Roof

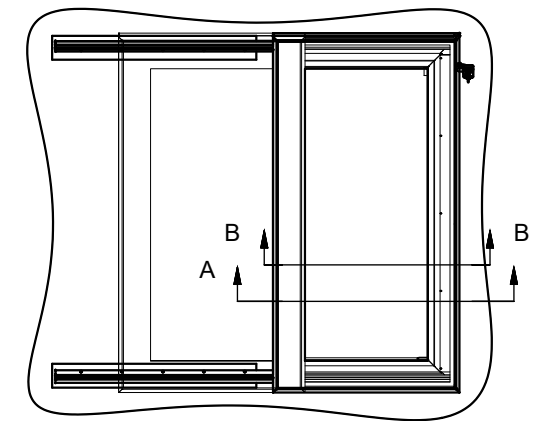
TITLE / DESCRIPTION	CHECKED
Double Glazed Section Through Width	JSL 28 Nov 2023

DRAWING NO.	SHEET
602-SDD-UK-008	1 OF 1

Section A-A
(Closed position)



Plan view showing open and closed positions



Silicone seals with non-friction coating (black)

Internal visible opening
Dimension dependant on internal finishes
and upstand thickness

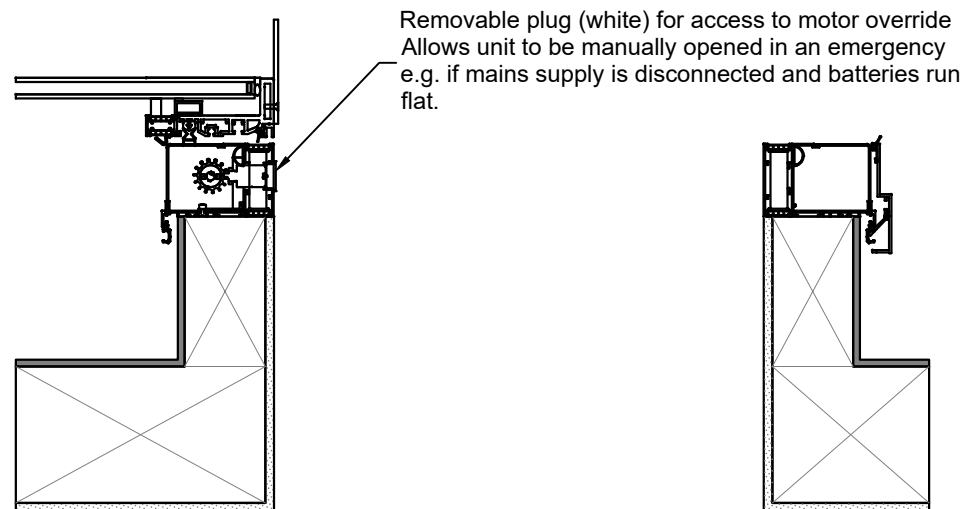
UPSTAND WIDTH

- Insulated glazed unit*
- Polyester powder coated aluminum fin (omitted on small units)
- Factory applied low modulus neutral cure silicone (standard = matt black) with polyethylene expanded foam backing rod
- Factory applied structural glazing tape and adhesive seal
- Insulating foam packing (black)
- Structurally bonded aluminium box section
- Polyester powder coated aluminium external framework (standard = RAL7015 slate grey)
- Polyester powder coated aluminium internal framework (standard = RAL9010 pure white)

Detail C

- Cable trunking
- Polyamide thermal breaks with factory applied PIR insulation
- Site applied silicone seal (supplied by Glazing Vision)
- Control cover flashing with rubber edging strip
- Brush seal
- Site applied structural upstand fixings and spacers (supplied by Glazing Vision)
- Fully weathered structural upstand and internal finishes (by others)

Section B-B
(Open position)



*Glazed unit specification dependent on client options and glazing area