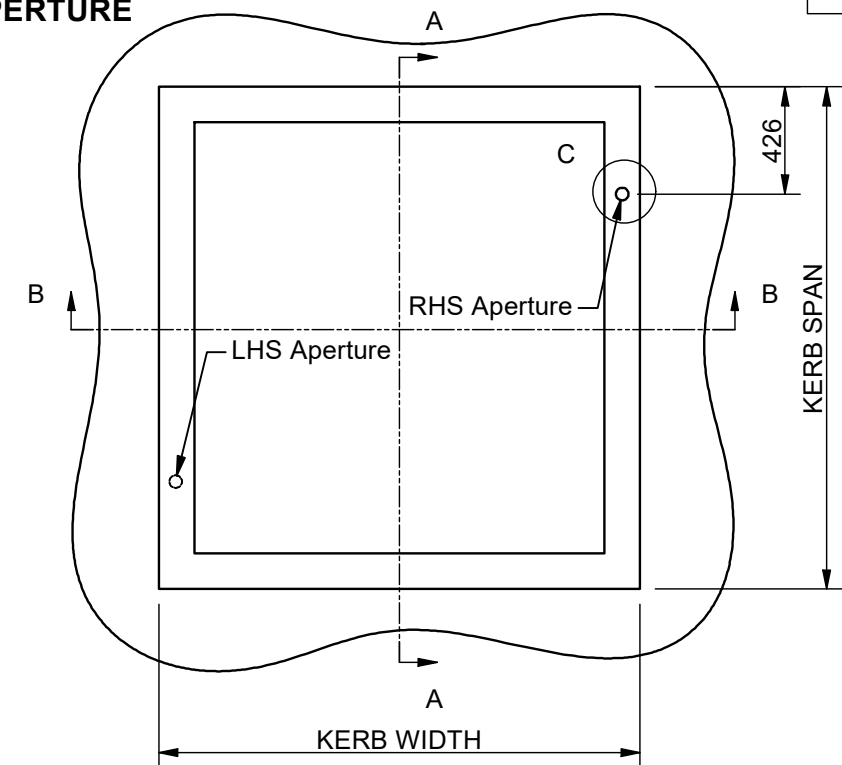
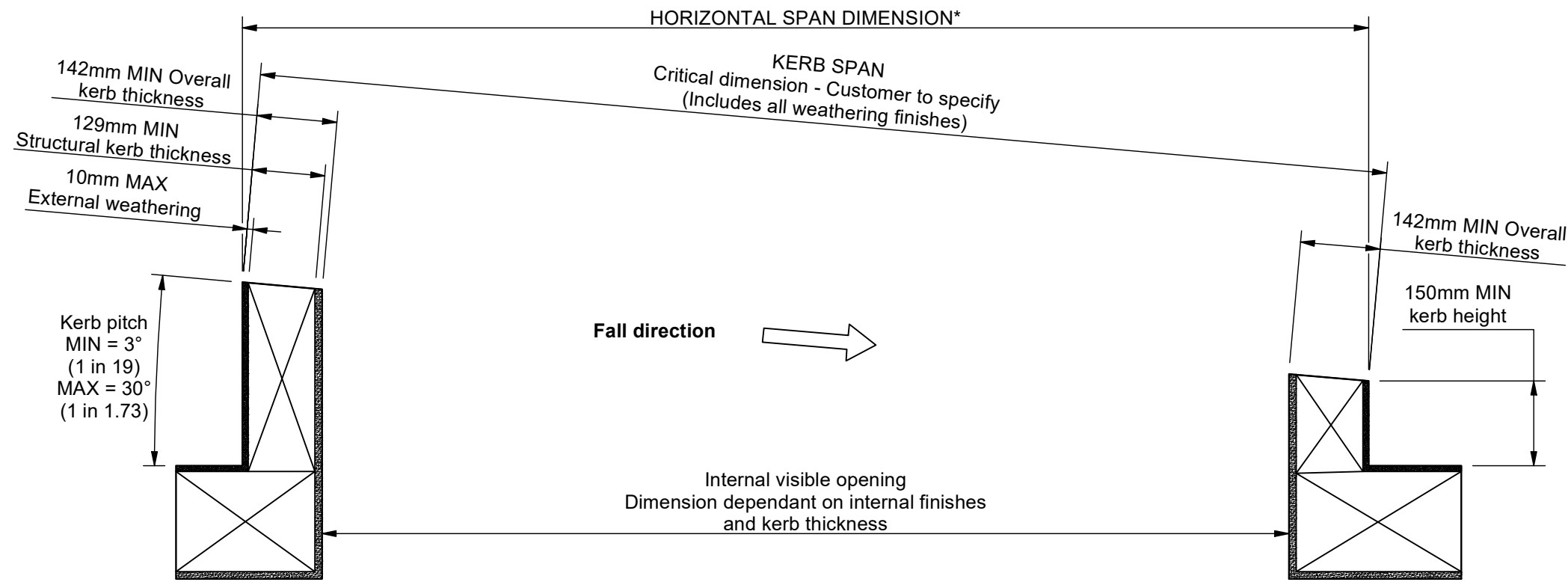
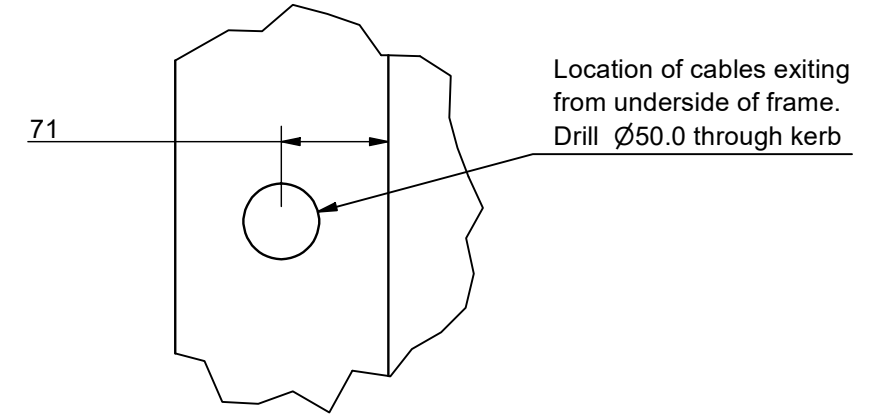


**NOTE: KERB SHOWN IS FOR RHS APERTURE.
TURN 180° FOR LHS APERTURE**

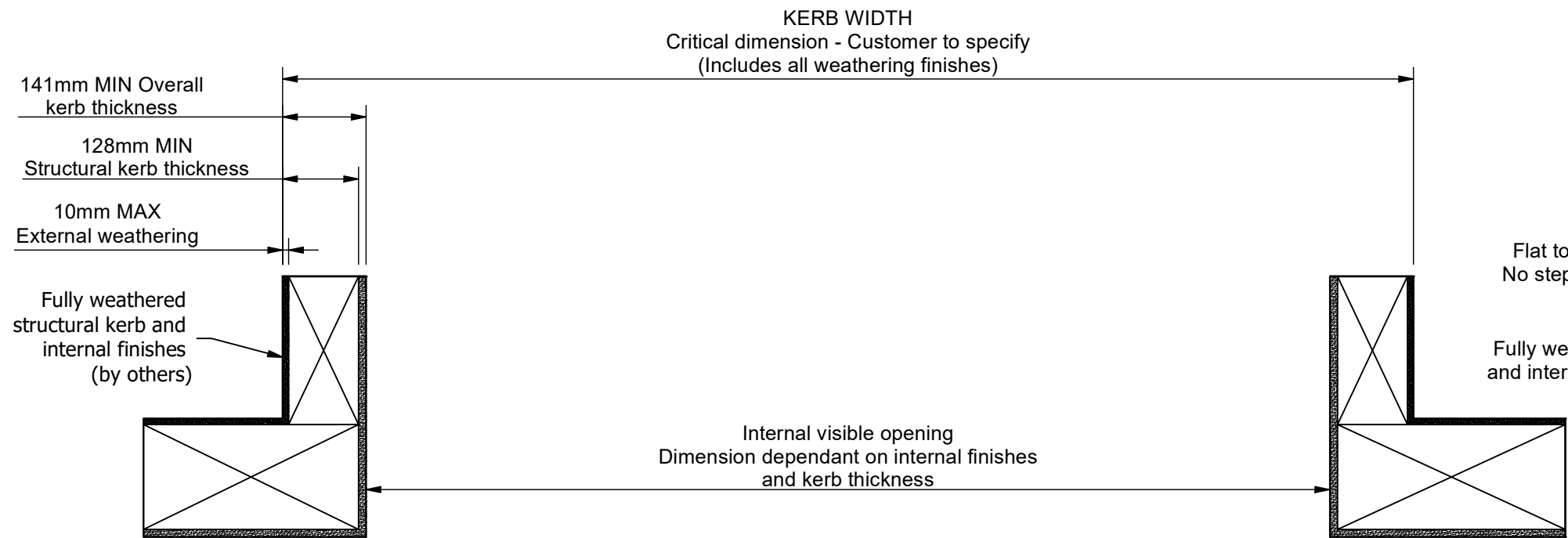
Section A-A (Scale 1 : 10)
View along fall



Detail C (Scale 1 : 5)

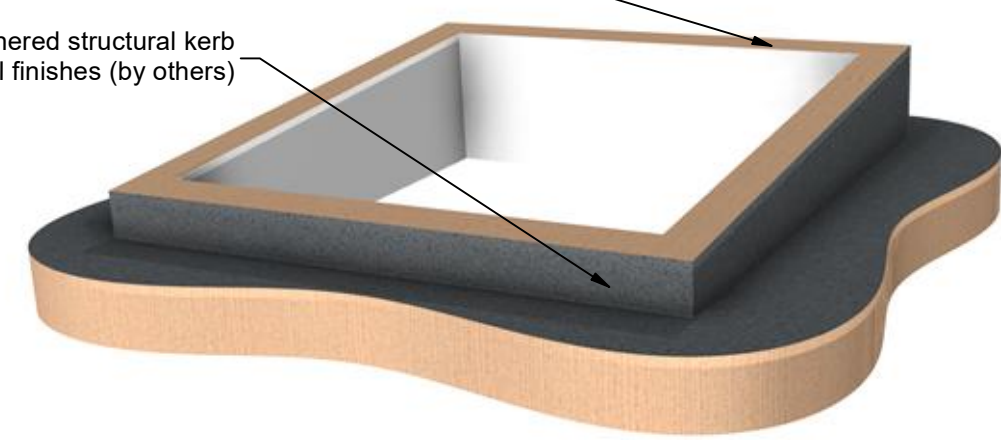


Section B-B (Scale 1 : 10)
View across fall



Flat top sealing surface and kerbs sides.
No steps or undulations exceeding ±2mm

Fully weathered structural kerb and internal finishes (by others)



*Dimension calculated as:
SPAN x COSINE(PITCH°)
e.g. 2000cos(3) = 1997mm

Rev	Revision Description	Drawn/Date
D	Max pitch changed from 45deg to 30deg	JSL 4/Dec/2020
E	Cable exit hole position corrected and clarified.	RJ 05 Sep 2022

Product: 603 - GV Standard Sliding over fixed	Checked By:
Description: Kerb details	
Materials: N/A	Check Date:
Finish: N/A	Drawn By: PGW
Weight: N/A	Drawn Date: 25/Feb/2014
Quantity: N/A	Drawing No: 603-ASS-402
Scale: 1:10	