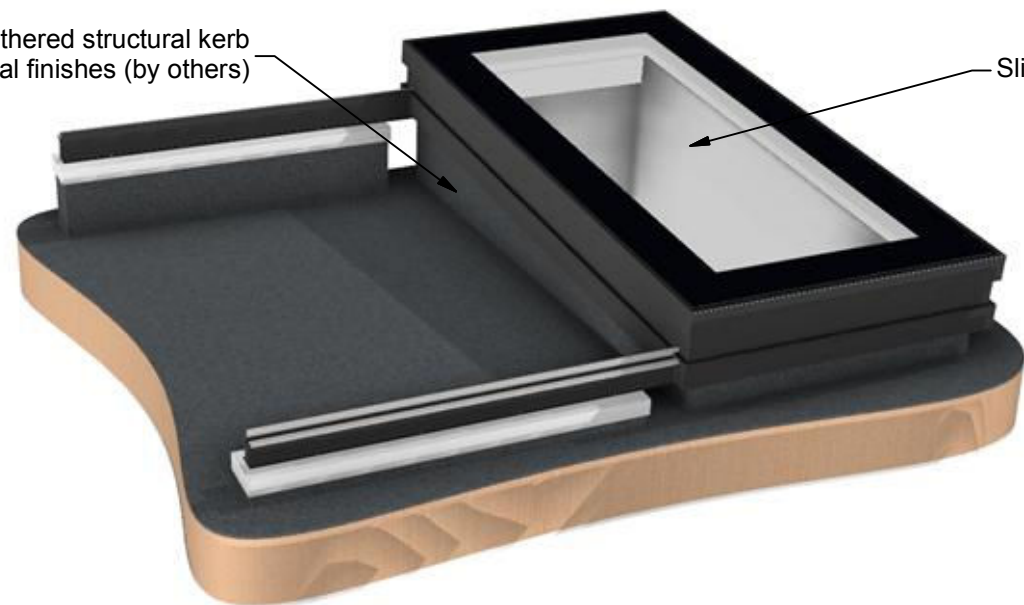


GV STANDARD SLIDING OVER ROOF
ELECTRONICALLY OPERATED SLIDING ROOFLIGHT

Closed position

Fully weathered structural kerb and internal finishes (by others)



Sliding section of glazing

Open position

Polyester powder coated aluminium extrusion with integrated polyamide thermal breaks offers exceptional thermal performance

Rain sensor optional extra. Standard position shown. Available in other positions (refer to 602-ASS-401)

Battery operation with continuous mains power trickle charge.

Glazing Vision electronic controller supplied with intelligent wall mountable switch as standard.

Hard anodised running tracks



Internal drive detail

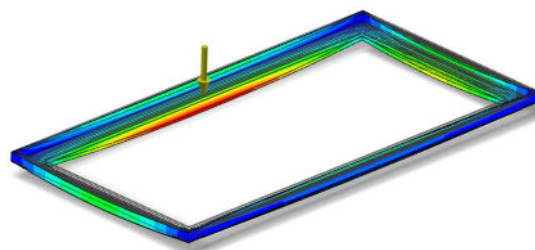
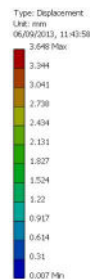
Twin drive motor mechanism comprising planetary gearbox motor concealed within framework providing optimum performance.

One way clutch and solenoid security feature (patent applied for) as standard, allows unit to be closed without power whilst maintaining security. Hidden internal override allows unit to be opened without power.

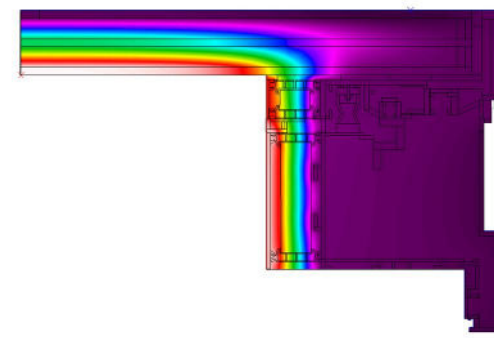
Rack and pinion drive



FEA MODELLED FOR STRUCTURAL INTEGRITY



THERMALLY MODELLED FOR INDUSTRY LEADING EFFICIENCY



REQUIRES WEATHERED KERB (NOT SUPPLIED)
REFER TO DRAWINGS:
602-ASS-402
602-ASS-403
602-ASS-404
602-ASS-405
602-ASS-406
FOR DETAILS

GLAZING VISION
Saw Mills Road
Diss
Norfolk
IP22 4RG
Tel: +44 (0)333 8000 881
Fax: +44 (0)333 8000 882
Email: sales@glazingvision.co.uk
Website: www.glazingvision.co.uk

IT IS GLAZING VISION'S POLICY TO CONTINUOUSLY DEVELOP AND IMPROVE OUR PRODUCTS. WE THEREFORE RESERVE THE RIGHT TO MODIFY OR CHANGE THE DETAIL DESIGN AT OUR DISCRETION AND WITHOUT PRIOR NOTICE. THIS DRAWING IS COPYRIGHT AND THE SOLE PROPERTY OF GLAZING VISION LTD. THE DESIGNS/INFORMATION IT CONTAINS ARE PRIVATE AND CONFIDENTIAL. IT MUST NOT BE COPIED, EXHIBITED OR COMMUNICATED TO THIRD PARTIES FOR ANY PURPOSE OTHER THAN THAT FOR WHICH IT WAS ISSUED WITHOUT THE WRITTEN PERMISSION OF GLAZING VISION LTD.

Third angle projection unless otherwise noted.
Tolerances:
Whole numbers = ±1mm
One decimal place = ±0.5mm
Two decimal places = ±0.2mm
All angles 90±0.5 degrees unless specified
IF IN DOUBT - ASK! DO NOT SCALE
Supplier to deburr & remove sharp corners

Rev	Revision Description	Drawn/Date
-	Initial release	PGW 18.12.2013
A	Amended reference to drawing	PGW 18.03.2013

Product: 602 - GV Standard Sliding Over Roof		Checked By: JamesB
Description: Product overview		Check Date: 18.03.2014
Materials: N/A	Drawn By: PGW	Drawing No: 602-ASS-400
Finish: Standard = RAL7015/RAL9010	Drawn Date: 18.12.2013	
Weight:		
Quantity: N/A		
Scale: NTS		