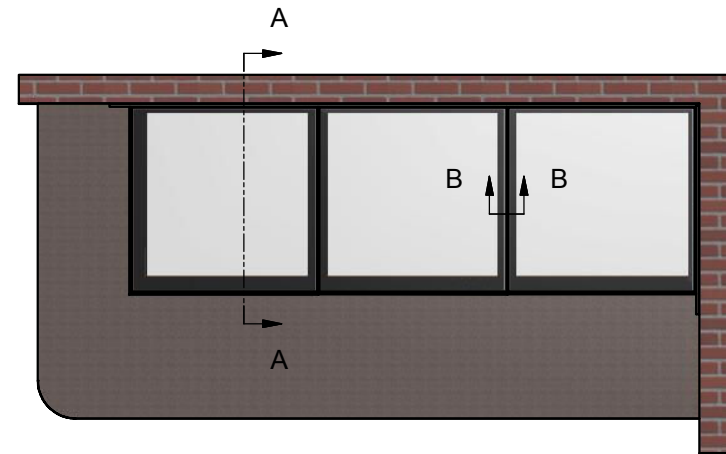
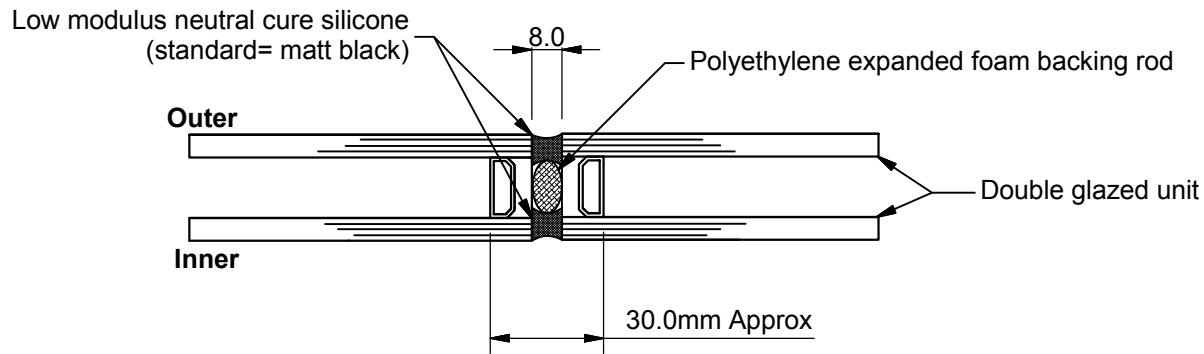
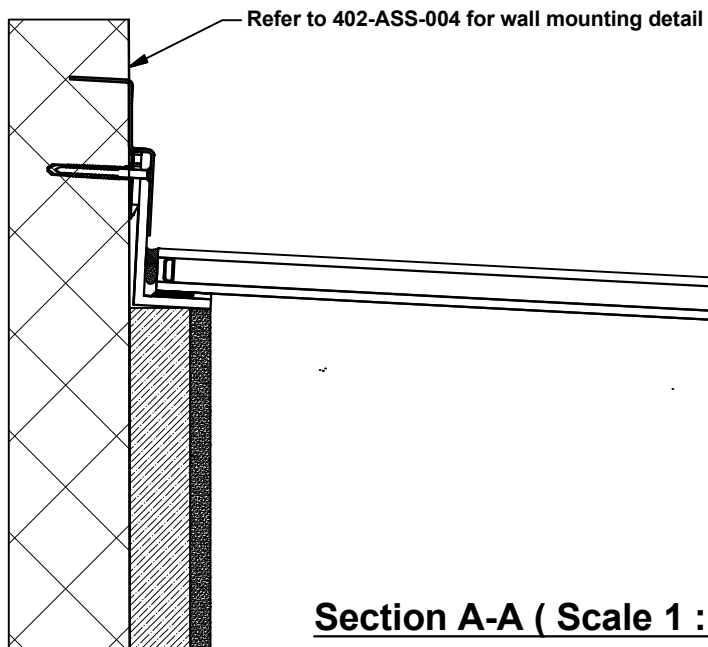


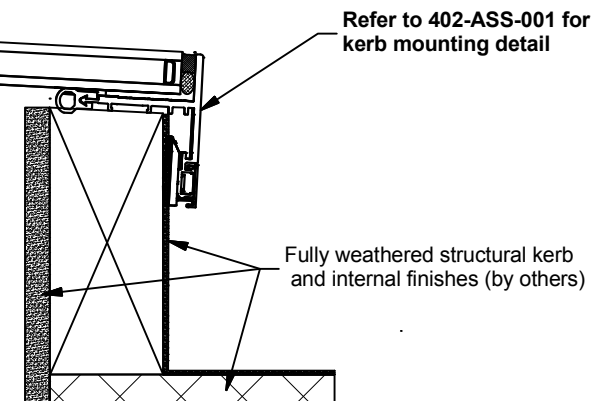
**Section B-B ( Scale 1 : 2 )**



**Note:** This is a standard reference drawing which includes both wall and kerb mounting details to illustrate the possible configurations for the flushglaze range. It is not an order specific drawing and therefore does not reflect your specific order dimensions or configuration. Ensure you check your order confirmation meets the specifics of your order before signing.



**Section A-A ( Scale 1 : 5 )**



**GLAZING VISION**

Saw Mills Road  
Diss  
Norfolk  
IP22 4RG

Tel: +44 (0)333 8000 881  
Fax: +44 (0)333 8000 882  
Email: sales@glazingvision.co.uk  
Website: www.glazingvision.co.uk

IT IS GLAZING VISION'S POLICY TO CONTINUOUSLY DEVELOP AND IMPROVE OUR PRODUCTS. WE THEREFORE RESERVE THE RIGHT TO MODIFY OR CHANGE THE DETAIL DESIGN AT OUR DISCRETION AND WITHOUT PRIOR NOTICE. THIS DRAWING IS COPYRIGHT AND THE SOLE PROPERTY OF GLAZING VISION LTD. THE DESIGNS/INFORMATION IT CONTAINS ARE PRIVATE AND CONFIDENTIAL. IT MUST NOT BE COPIED, EXHIBITED OR COMMUNICATED TO THIRD PARTIES FOR ANY PURPOSE OTHER THAN THAT FOR WHICH IT WAS ISSUED WITHOUT THE WRITTEN PERMISSION OF GLAZING VISION LTD.

Third angle projection unless otherwise noted.  
Tolerances:  
Whole numbers = ±1mm  
One decimal place = ±0.5mm  
Two decimal places = ±0.2mm  
All angles 90±0.5 degrees unless specified  
**IF IN DOUBT - ASK! DO NOT SCALE**  
**Supplier to deburr & remove sharp corners**

Rev	Revision Description	Drawn/Date
F	Wall abutment detail changed. Clip-on cover removed	SW 08.07.2015

<b>Product:</b> 402-Flushglaze		<b>Checked By:</b> JWL
<b>Description:</b> Double glaze flushglaze wall mount detail (pitches upto and including 5 degrees)		
<b>Materials:</b> As above		<b>Check Date:</b> 08-07-2015
<b>Finish:</b> N/A	<b>Drawn By:</b> SW	
<b>Weight:</b> N/A	<b>Drawn Date:</b> 08.07.2015	
<b>Quantity:</b> N/A	<b>Drawing No:</b> 402-ASS-021	
<b>Scale:</b> 1:5 @A4		