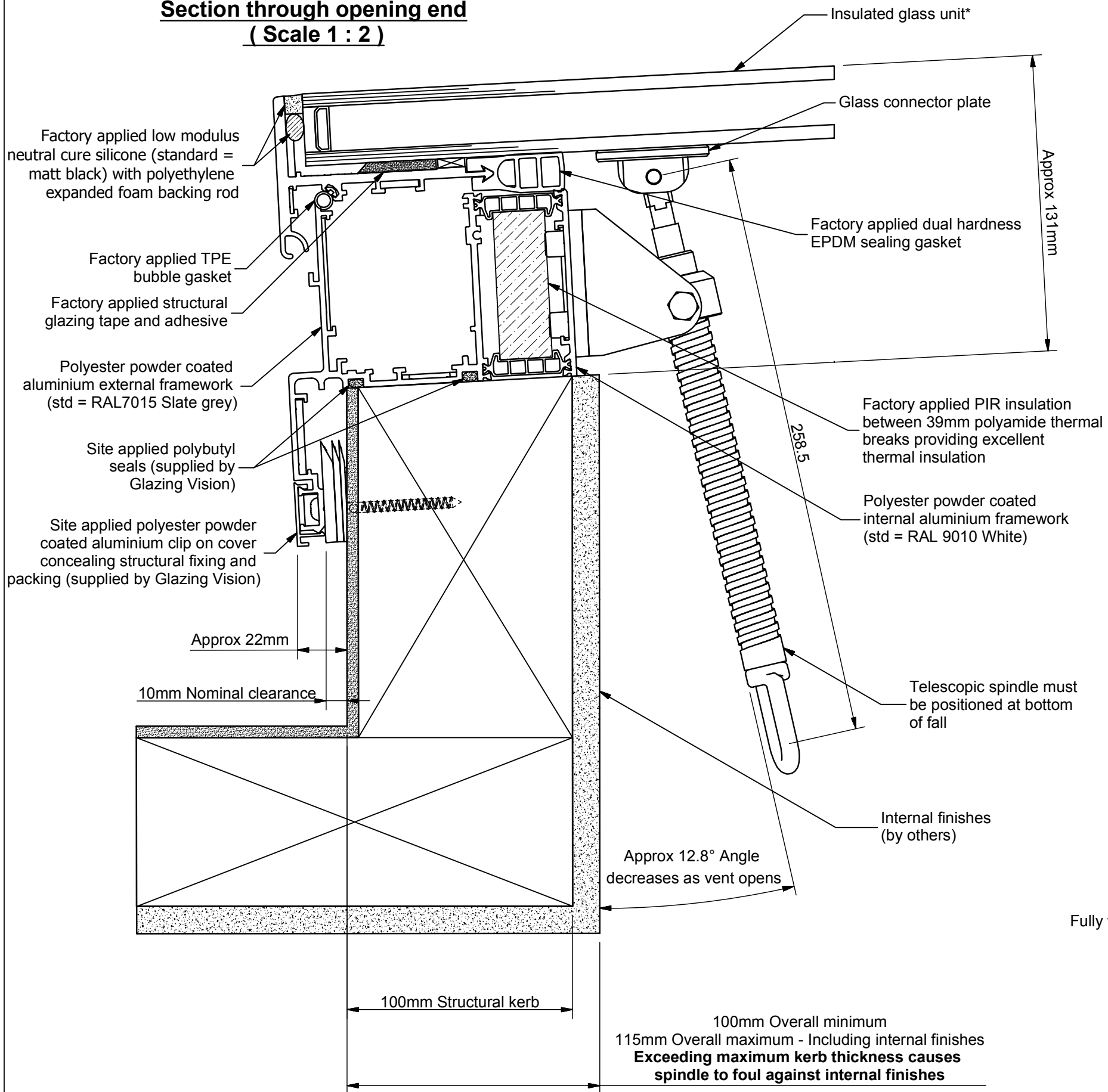
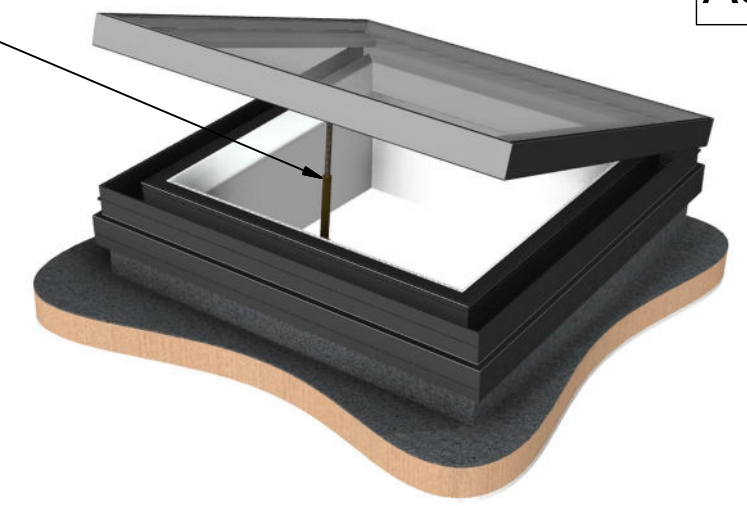


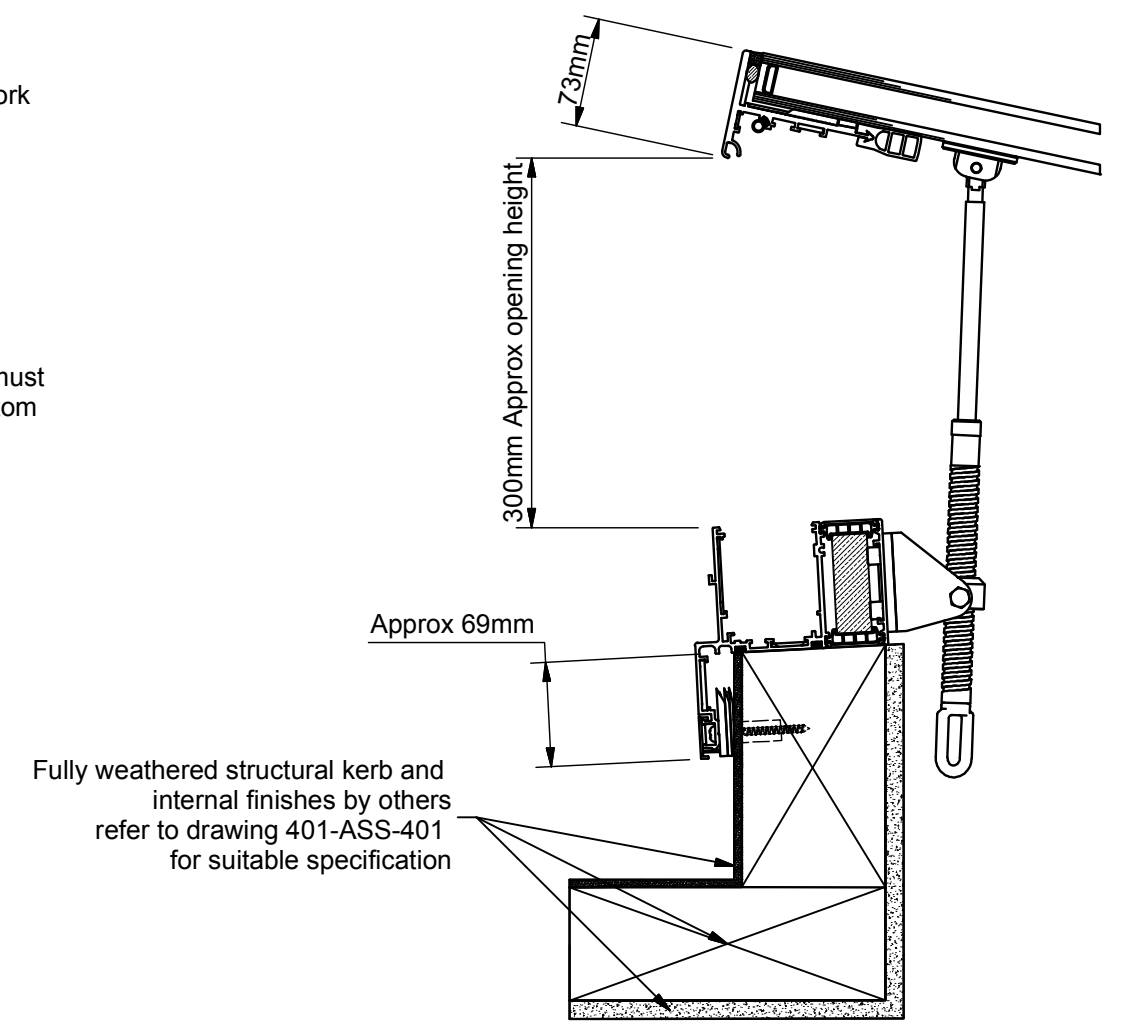
**Section through opening end
(Scale 1 : 2)**



Brass finish as standard



**Section through opening end.
Open position (Scale 1 : 5)**



*Specification dependent on client options and glazing area
Design patented: GB2514119

Telescopic crank handle supplied as standard for operation

<p>Saw Mills Road Diss Norfolk IP22 4RG</p> <p>Tel: +44 (0)333 8000 881 Fax: +44 (0)333 8000 882 Email: sales@glazingvision.co.uk Website: www.glazingvision.co.uk</p>	<p>IT IS GLAZING VISION'S POLICY TO CONTINUOUSLY DEVELOP AND IMPROVE OUR PRODUCTS. WE THEREFORE RESERVE THE RIGHT TO MODIFY OR CHANGE THE DETAIL DESIGN AT OUR DISCRETION AND WITHOUT PRIOR NOTICE. THIS DRAWING IS COPYRIGHT AND THE SOLE PROPERTY OF GLAZING VISION LTD. THE DESIGNS/INFORMATION IT CONTAINS ARE PRIVATE AND CONFIDENTIAL. IT MUST NOT BE COPIED, EXHIBITED OR COMMUNICATED TO THIRD PARTIES FOR ANY PURPOSE OTHER THAN THAT FOR WHICH IT WAS ISSUED WITHOUT THE WRITTEN PERMISSION OF GLAZING VISION LTD.</p>	<p>Third angle projection unless otherwise noted. Tolerances: Whole numbers = ±1mm One decimal place = ±0.5mm Two decimal places = ±0.2mm Angular = ±0.5 degree IF IN DOUBT - ASK! DO NOT SCALE Supplier to deburr & remove sharp corners</p>	Rev	Revision Description	Drawn/Date	Product: 401 - GV Standard VisionVent Description: Manual vent only	Checked By: JSL
			D	Spindle note changed to brass	SW 14.11.16	Materials: As above	Check Date: 14.11.16
			C	Patent no. added	JSL 24.10.16	Finish: Weight: N/A Quantity: N/A Scale: As above	Drawn By: JamesB Drawn Date: 05.02.13 Drawing No: 401-ASS-409