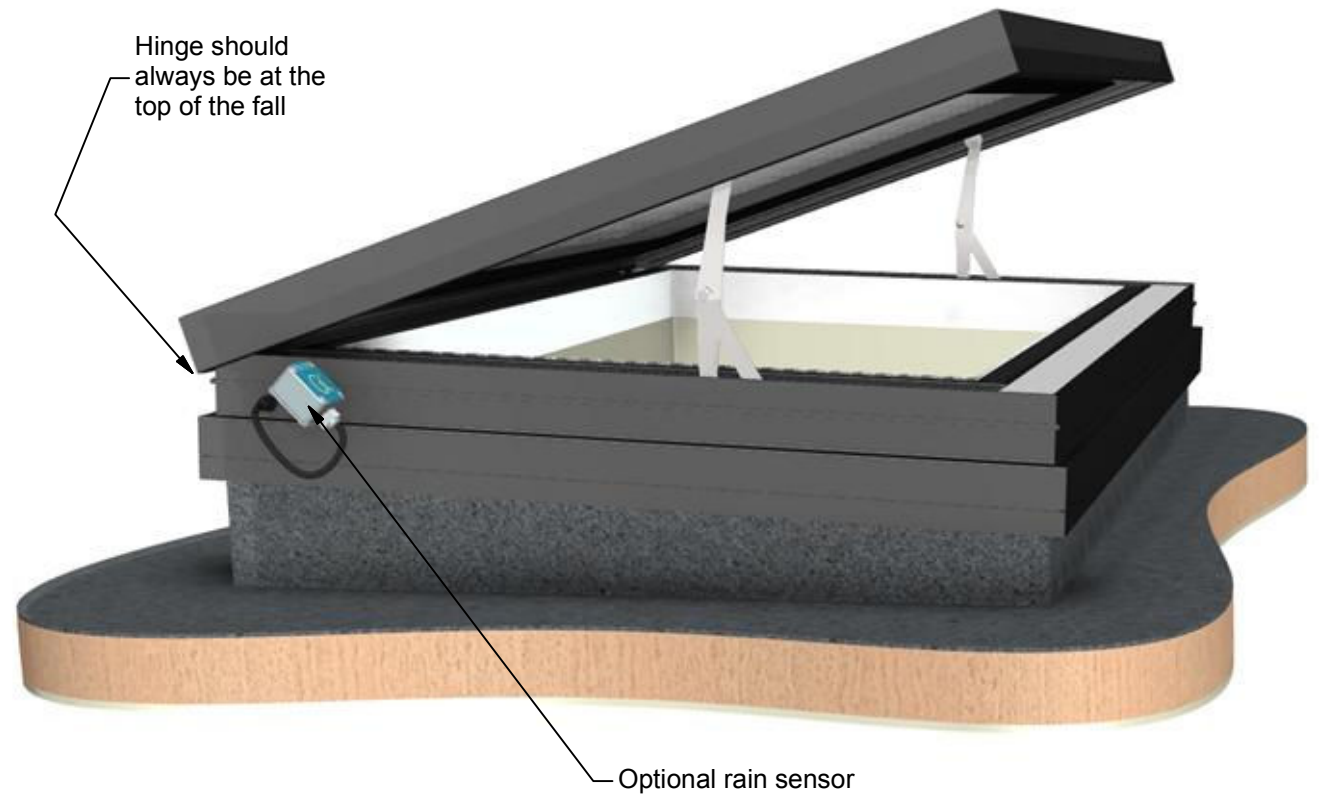


GV STANDARD VISIONVENT
 ELECTRONICALLY CONTROLLED HINGED ROOFLIGHT
 DESIGN PATENTED: GB2414119

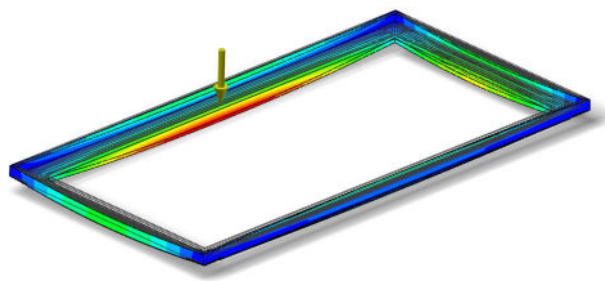
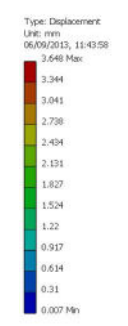


Mechanism detail view

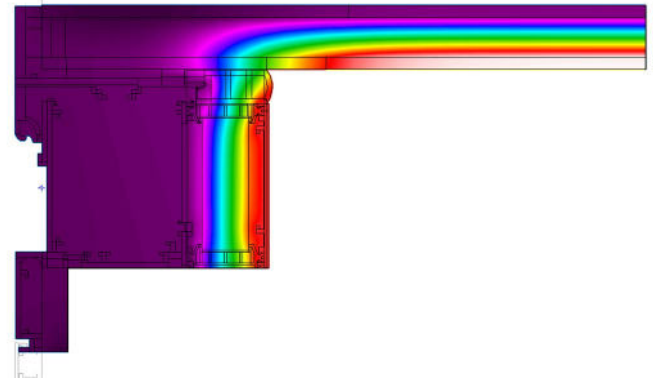


Concealed electro-mechanical opening mechanism. Side mounted synchronised pair allow unobstructed views through the leading edge as well as security for the lid

FEA MODELLED FOR STRUCTURAL INTEGRITY



THERMALLY MODELLED FOR INDUSTRY LEADING EFFICIENCY



REQUIRES WEATHERED KERB (NOT SUPPLIED)
 REFER TO DRAWING: 401-ASS-401

GLAZING VISION
 Saw Mills Road
 Diss Norfolk IP22 4RG
 Tel: +44 (0)333 8000 881
 Fax: +44 (0)333 8000 882
 Email: sales@glazingvision.co.uk
 Website: www.glazingvision.co.uk

IT IS GLAZING VISION'S POLICY TO CONTINUOUSLY DEVELOP AND IMPROVE OUR PRODUCTS. WE THEREFORE RESERVE THE RIGHT TO MODIFY OR CHANGE THE DETAIL DESIGN AT OUR DISCRETION AND WITHOUT PRIOR NOTICE. THIS DRAWING IS COPYRIGHT AND THE SOLE PROPERTY OF GLAZING VISION LTD. THE DESIGNS/INFORMATION IT CONTAINS ARE PRIVATE AND CONFIDENTIAL. IT MUST NOT BE COPIED, EXHIBITED OR COMMUNICATED TO THIRD PARTIES FOR ANY PURPOSE OTHER THAN THAT FOR WHICH IT WAS ISSUED WITHOUT THE WRITTEN PERMISSION OF GLAZING VISION LTD.

Third angle projection unless otherwise noted.
 Tolerances:
 Whole numbers = ±1mm
 One decimal place = ±0.5mm
 Two decimal places = ±0.2mm
 All angles 90±0.5 degrees unless specified
IF IN DOUBT - ASK! DO NOT SCALE
Supplier to deburr & remove sharp corners

Rev	Revision Description	Drawn/Date
B	Patent no. added	JSL 10.10.16
A	Amended kerb reference drawing to 401	JamesB 18.02.14

Product: 401 - GV Standard VisionVent		Checked By: JWL
Description: General arrangement		
Materials: N/A	Drawn By: JamesB	Check Date: 10.10.16
Finish: N/A	Drawn Date: 09.12.13	
Weight:	Drawing No: 401-ASS-400	
Quantity: N/A		
Scale: N/A		