



The Machrie Hotel, Isle of Islay

Architect: Hudson Architects

AJ Specification Awards
Finalist

A dramatic multipart Ridgeglaze rooflight has been designed to run along the entire apex of the roof in the recently redesigned Machrie Hotel. Providing natural daylight, it has become a feature of the restaurant and bar area, allowing plenty of natural daylight in and helping to create a much brighter open space.

Set in the sand dunes of Laggan Bay on the west coast of Islay, in the Inner Hebrides, lies a spectacular 18-hole championship links golf course and 47-bedroom hotel – ‘The Machrie’. The venue has been extensively re-modelled and opened to the public once again.

The original Machrie Golf Course was designed in 1891 by course designer, Willie Campbell. During his golfing career, Campbell reached the top ten of The Open Championship eight times during the 1880’s and gained recognition as both an instructor and player. He oversaw other course designs after moving to the United States, and his wife – Georgina Campbell is cited as the first ladies golf professional in the USA.

The Machrie Links course was modernised in 2014 by renowned course architect DJ Russell, a European Tour professional, chalking up two tour victories in 1985 and 1992. The re-design of the Links course was followed by the development of a new hotel venue and club house.

The Machrie Hotel, Isle of Islay

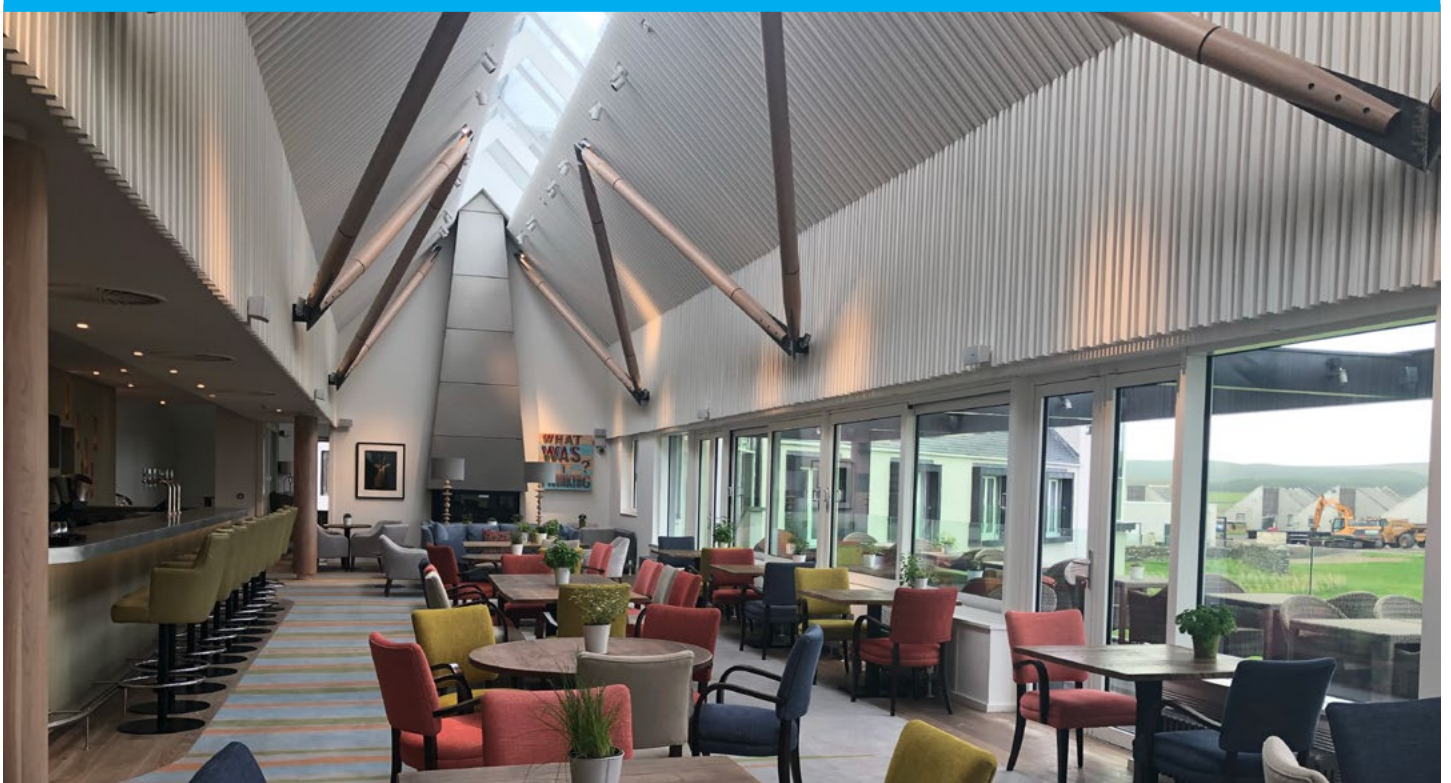
Dramatic Bespoke Ridgeglaze Rooflight

Hudson Architects were appointed to redesign the existing hotel, their scheme included the addition of a new south facing wing and four new lodges. A new restaurant and bar area with west facing terrace was proposed as the centrepiece of the development, and Hudson were keen to exploit the unique quality of light offered by this unique location overlooking the Atlantic Ocean.

Hudson Architects have worked with Glazing Vision on several award-winning projects, such as Le Petit Fort, in Jersey. They knew that the inclusion of a large rooflight system would be key to maximising natural daylight in the restaurant and bar area and specified a dramatic Ridgeglaze modular rooflight arrangement designed to run along the entire apex of the roof.

In total, the Ridgeglaze measured 20.5 metres long and was split into individual sections of glass that run down each roof return to 1.3 metres. Robert Mainwaring, the architect who worked on the project, explains “in terms of details, the rooflight was fairly straightforward to detail and build.” The lead joints in the upstand aligned with the joints of the rooflight, enhancing the neat overall appearance and internally the frames are hidden by the reveal and battening – making for a truly spectacular roof detail, which has maintained the strength of the roof, while allowing natural daylight to fill the below dining space.





It's not only the light that is causing an impact, in certain light conditions, the 45° pitch of the glass reflects a distinct view of the coast when you look up at the Ridgeglaze rooflight, creating an added benefit to residents at the hotel. Furthermore, when illuminated internally at night, the Ridgeglaze acts as a "beacon whether approaching the hotel or looking back at it from the golf course and coast", creating spectacular viewing even when the sun isn't shining down.

The Machrie completed in 2018 and has been well received by local Islay residents and golfers alike, keen to take on the demanding dune course. During peak seasons the venue will employ at least 65 people. Facilities include a stunning bar and restaurant, thirty seat cinema, function room, treatment rooms, a sauna and gym.

Speaking about the bespoke Ridgeglaze rooflight, Robert Mainwaring concludes "The finished result is excellent, one of the best elements of the project. When the ridge light was installed it set a high benchmark for the rest of the project. The quality of the product is excellent and the light that enters the space is exceptional."

The Machrie Links was shortlisted for the 2019 AJ Specification Awards, in the 'Doors and Windows' category.

For more information on Glazing Vision's range of rooflights to suit a variety of applications, contact us on 01379 658 309. Alternatively, to book a CPD, please visit www.glazingvision.co.uk/cpd.