

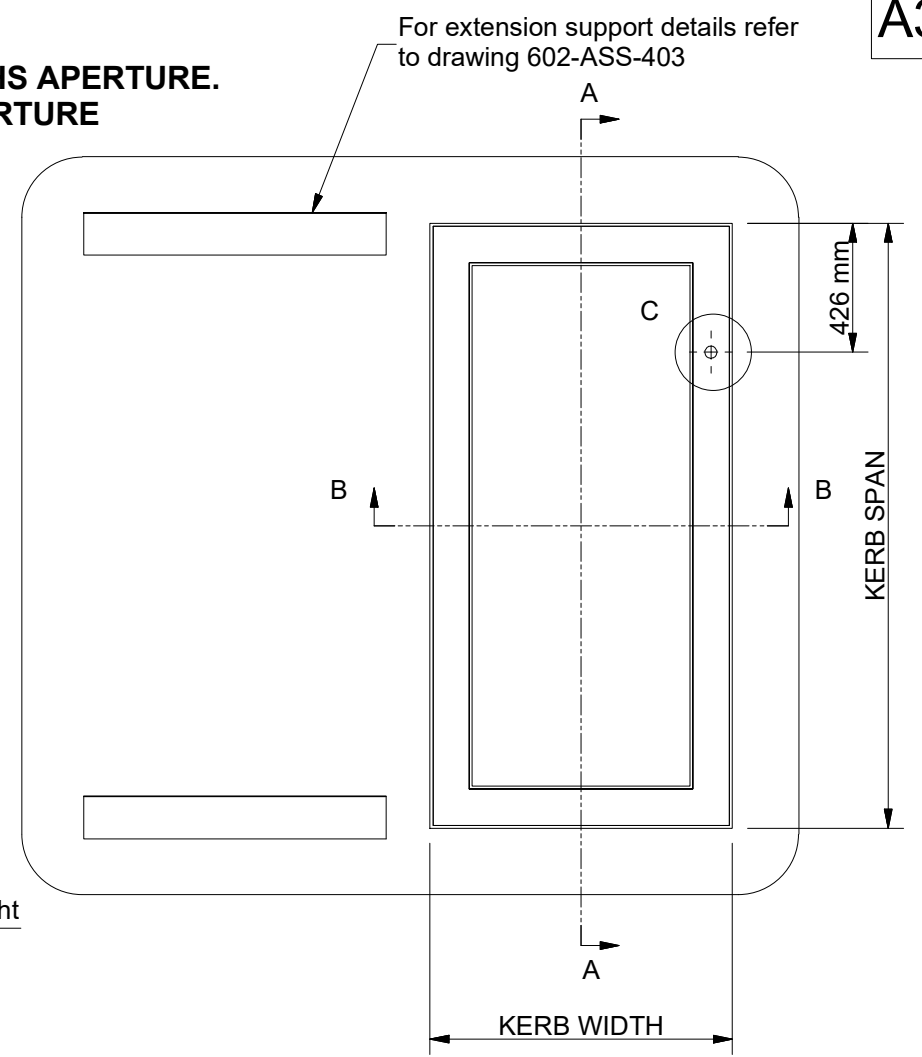
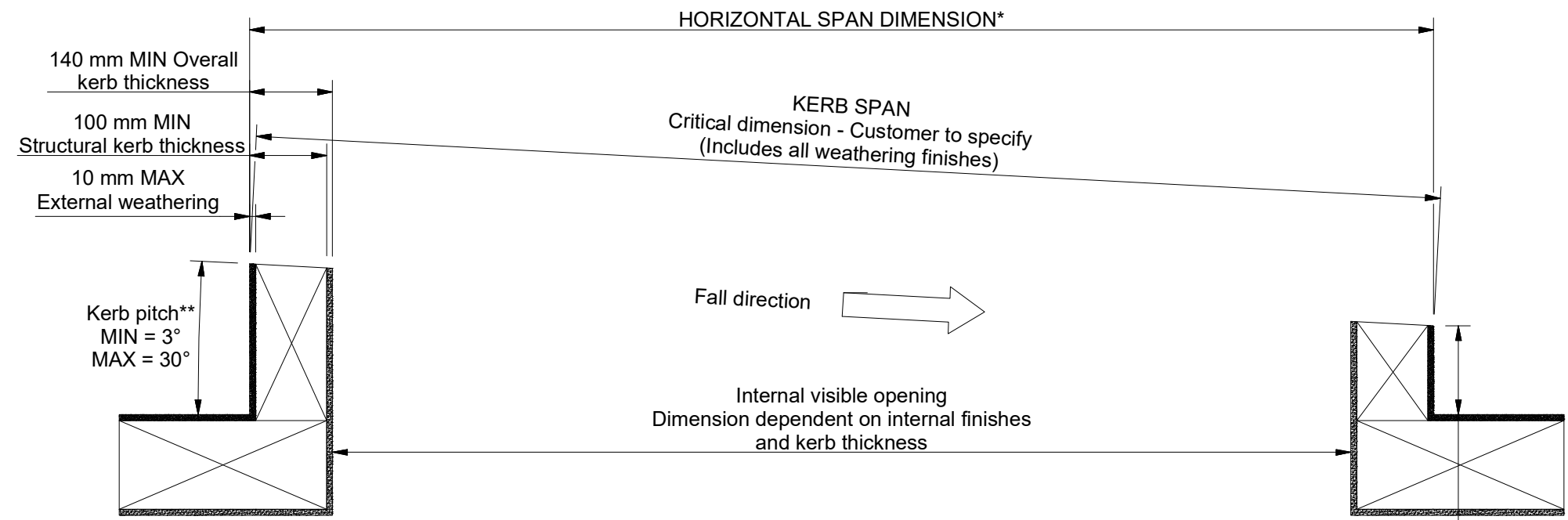
* Dimension calculated as: SPAN x COSINE(PITCH°) E.g. 2000cos(5) = 1992.4mm

** Refer to S0009 for kerb pitches exceeding 5°

Section A-A (Scale 1 : 10)

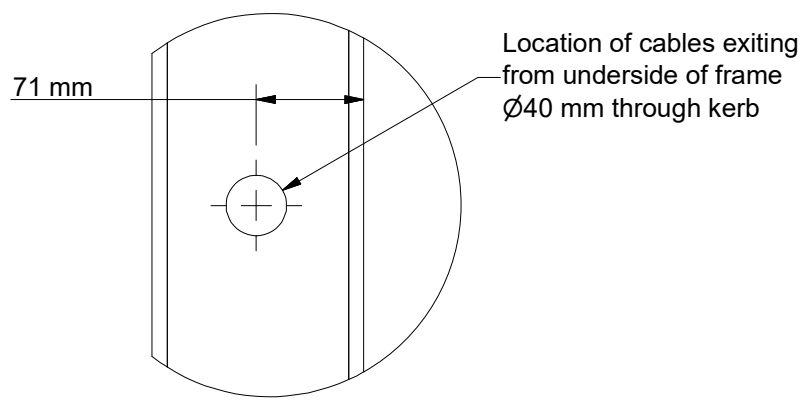
View along fall

**NOTE: KERB SHOWN IS FOR RHS APERTURE.
MIRROR FOR LHS APERTURE**



Detail C (Scale 1:5)

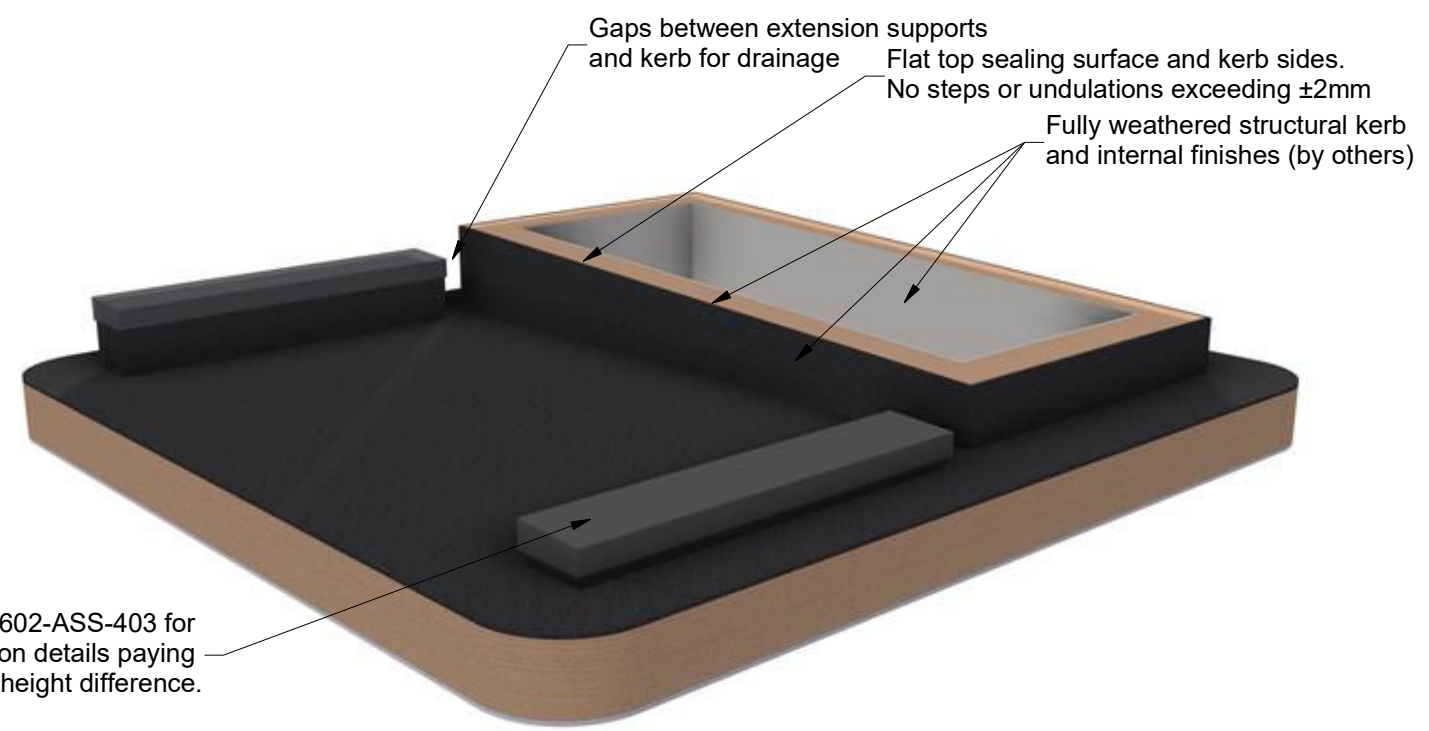
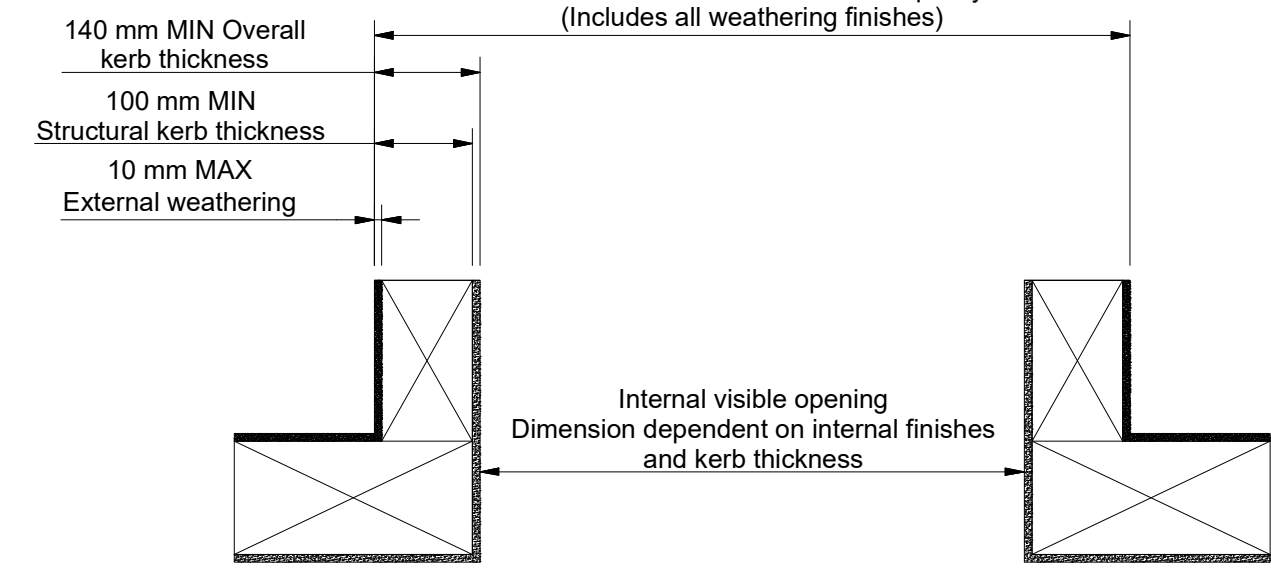
Cable exit



Section B-B (Scale 1 : 10)

View across fall

KERB WIDTH
Critical dimension - Customer to specify
(Includes all weathering finishes)



Rev	Revision Description	Drawn/Date
C	Kerb Note added.	SW 5/Jun/2017
D	Max pitch changed from 45deg to 30deg	JSL 4/Dec/2020

Product: 602 - GV Standard Sliding Over Roof		Checked By: HL
Description: Kerb Detail		Check Date: 4/Dec/2020
Materials: N/A	Drawn By: JWL	Drawing No: 602-ASS-402
Finish: N/A	Drawn Date: 29/Jul/2015	
Weight: N/A	Quantity: N/A	
Quantity: N/A	Scale: 1:25 1:10 1:5	