

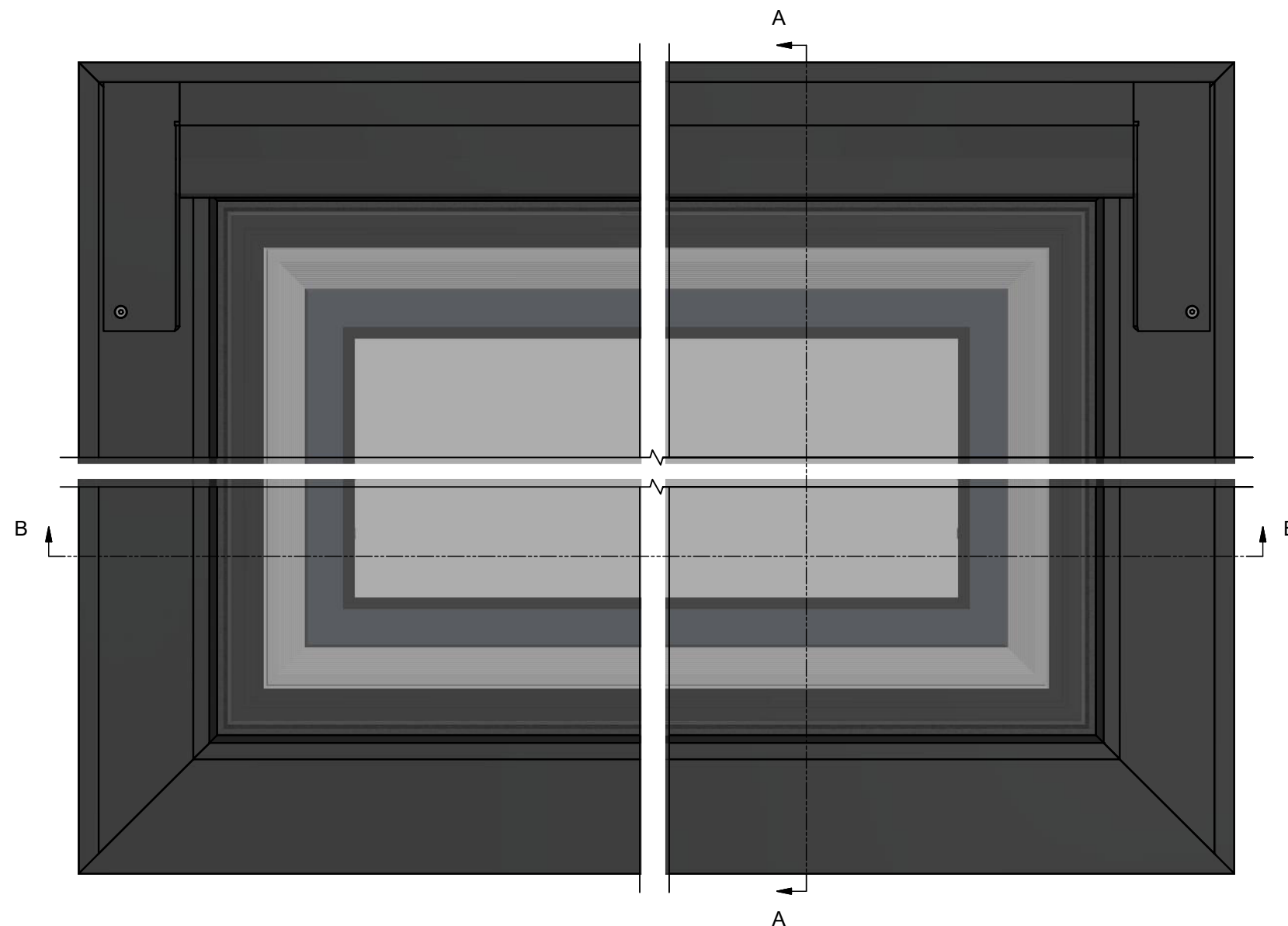
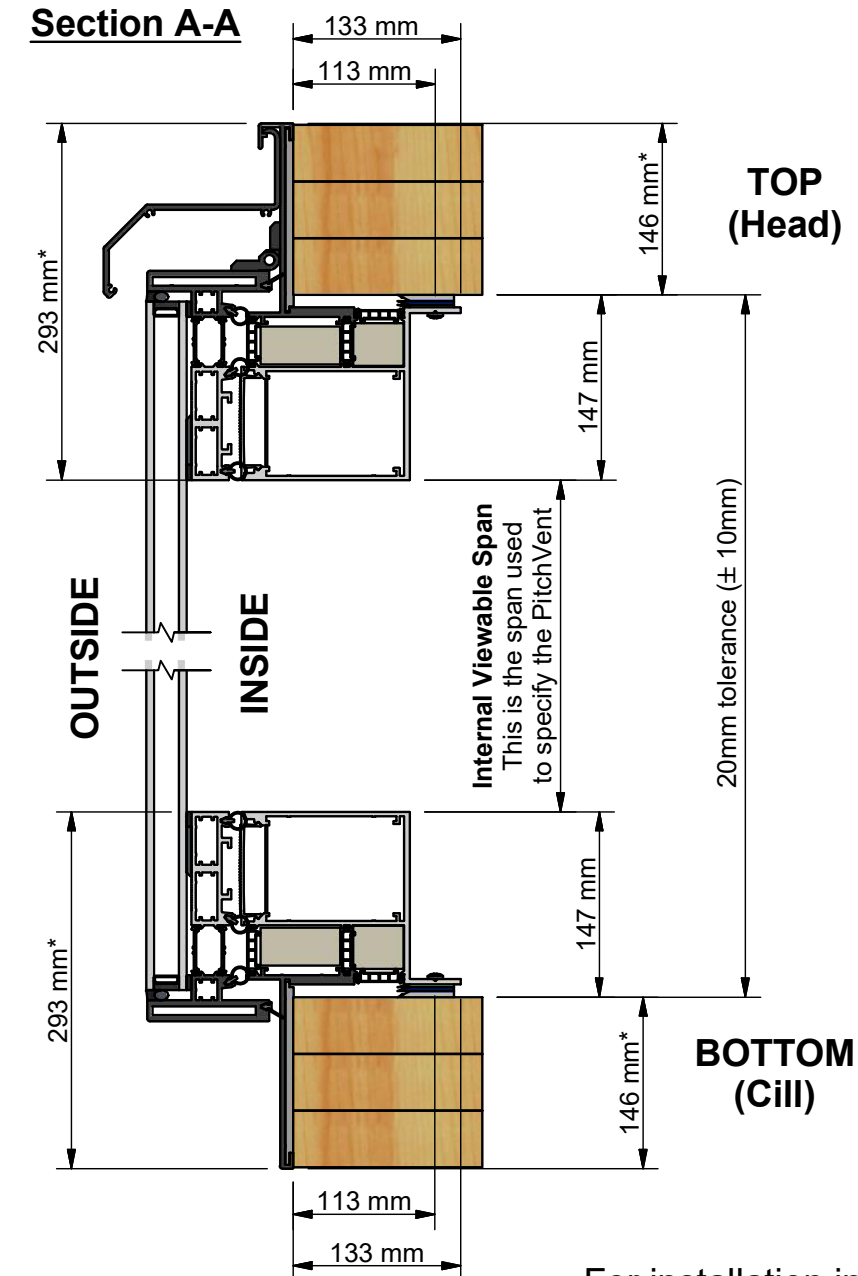
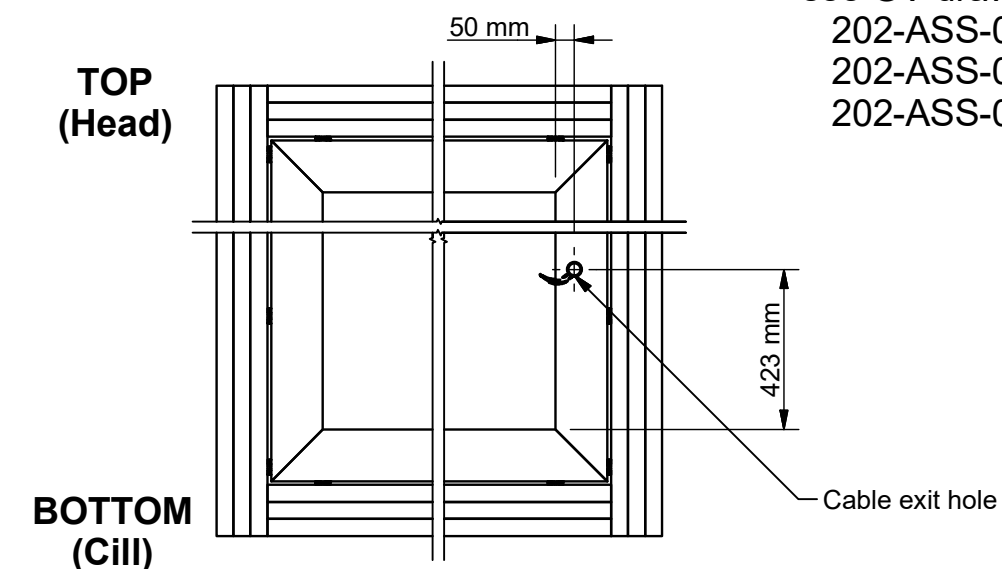


GV Standard Pitchvent

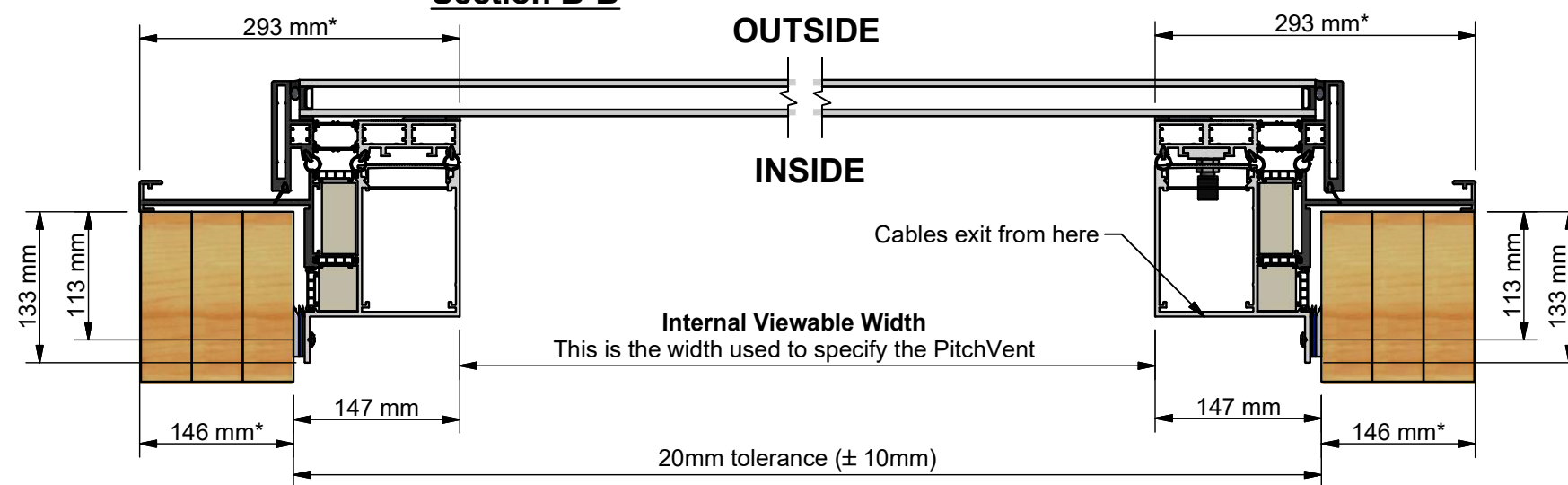
202-ASS-000 v1.2 - Sales Drawing Pack

Including drawing numbers:

202-ASS-001 rev A
202-ASS-002
202-ASS-003
202-ASS-004
202-ASS-005
202-ASS-006
202-ASS-007
202-ASS-008 rev A
202-ASS-009
202-ASS-010

**Section A-A****Plan View**

For installation information,
see GV drawings
202-ASS-002
202-ASS-003
202-ASS-004

Section B-B

* Value includes nominal 10mm tolerance

**GLAZING
VISION**

Saw Mills Road
Diss
Norfolk
IP22 4RG

Tel: +44 (0)333 8000 881
Fax: +44 (0)333 8000 882
Email: sales@glazingvision.co.uk
Website: www.glazingvision.co.uk

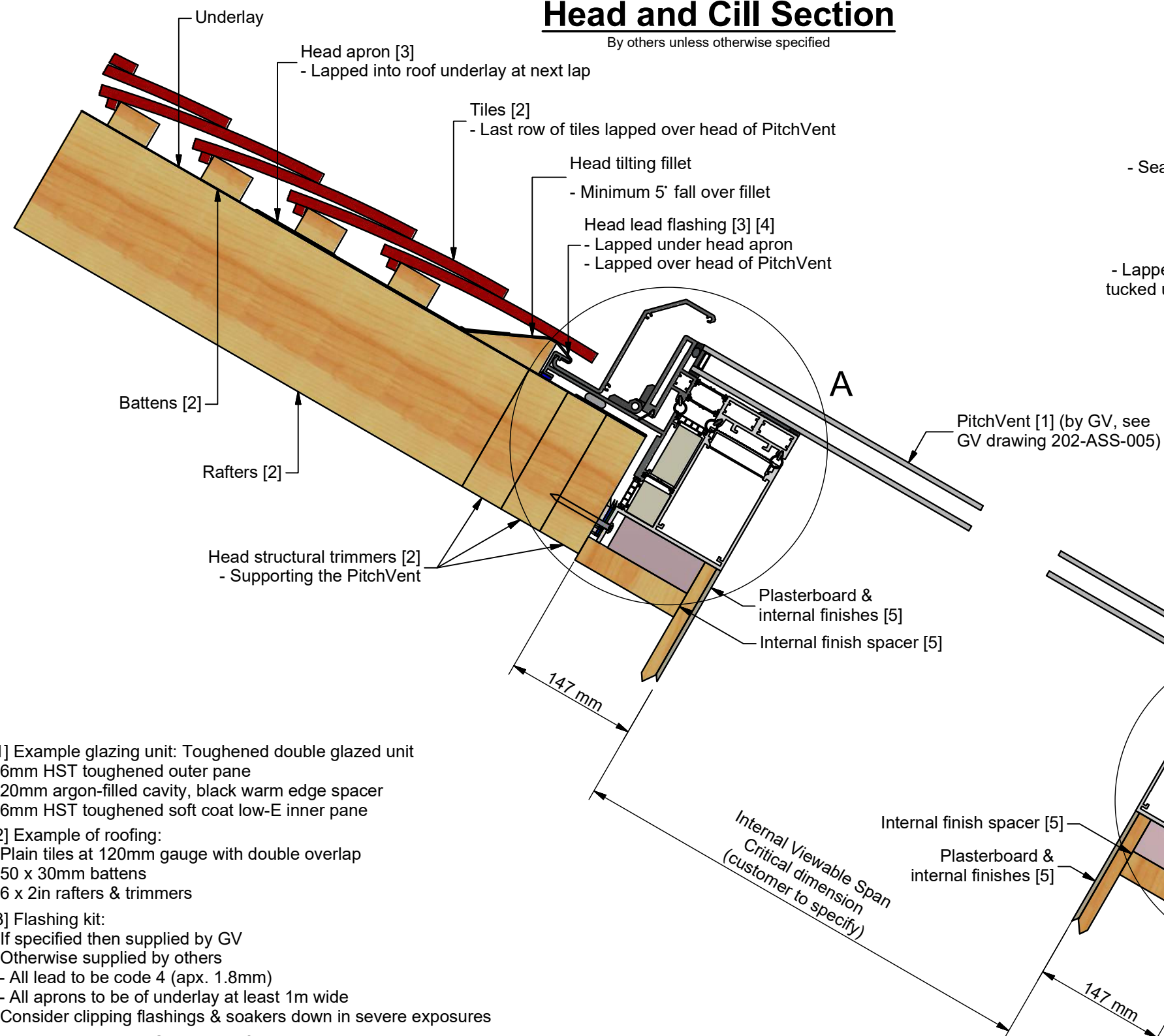
IT IS GLAZING VISION'S POLICY TO CONTINUOUSLY DEVELOP AND IMPROVE OUR PRODUCTS. WE THEREFORE RESERVE THE RIGHT TO MODIFY OR CHANGE THE DETAIL DESIGN AT OUR DISCRETION AND WITHOUT PRIOR NOTICE. THIS DRAWING IS COPYRIGHT AND THE SOLE PROPERTY OF GLAZING VISION LTD. THE DESIGNS/INFORMATION IT CONTAINS ARE PRIVATE AND CONFIDENTIAL. IT MUST NOT BE COPIED, EXHIBITED OR COMMUNICATED TO THIRD PARTIES FOR ANY PURPOSE OTHER THAN THAT FOR WHICH IT WAS ISSUED WITHOUT THE WRITTEN PERMISSION OF GLAZING VISION LTD.

Third angle projection unless otherwise noted.
Tolerances:
Whole numbers = $\pm 1\text{mm}$
One decimal place = $\pm 0.5\text{mm}$
Two decimal places = $\pm 0.2\text{mm}$
All angles 90 ± 0.5 degrees unless specified
IF IN DOUBT - ASK! DO NOT SCALE
Supplier to deburr & remove sharp corners

Rev	Revision Description	Drawn/ Date	Product: 201 - PitchVent		Checked By:
-	Initial Release	HL 02.02.18	Description: PitchVent General Dimensions		HL
			Materials: N/A		Check Date: 24.06.19
			Finish: N/A	Drawn By: HL	
A	Tolerances added to asterisked (*) values	JSL 24.06.19	Weight: N/A	Drawn Date: 02.02.18	
			Quantity: N/A	Drawing No: 202-ASS-001	
			Scale: N/A		

Head and Cill Section

By others unless otherwise specified



[1] Example glazing unit: Toughened double glazed unit
 - 6mm HST toughened outer pane
 - 20mm argon-filled cavity, black warm edge spacer
 - 6mm HST toughened soft coat low-E inner pane

[2] Example of roofing:
 - Plain tiles at 120mm gauge with double overlap
 - 50 x 30mm battens
 - 6 x 2in rafters & trimmers

[3] Flashing kit:
 - If specified then supplied by GV
 - Otherwise supplied by others
 - All lead to be code 4 (apx. 1.8mm)
 - All aprons to be of underlay at least 1m wide
 - Consider clipping flashings & soakers down in severe exposures

[4] Mortar beds are NOT suitable for use with this product
 - Tiles may need to be removed for product maintenance

[5] Example of internal finish:
 - Plasterboard spaced away from the rafters/structural trimmers using timber

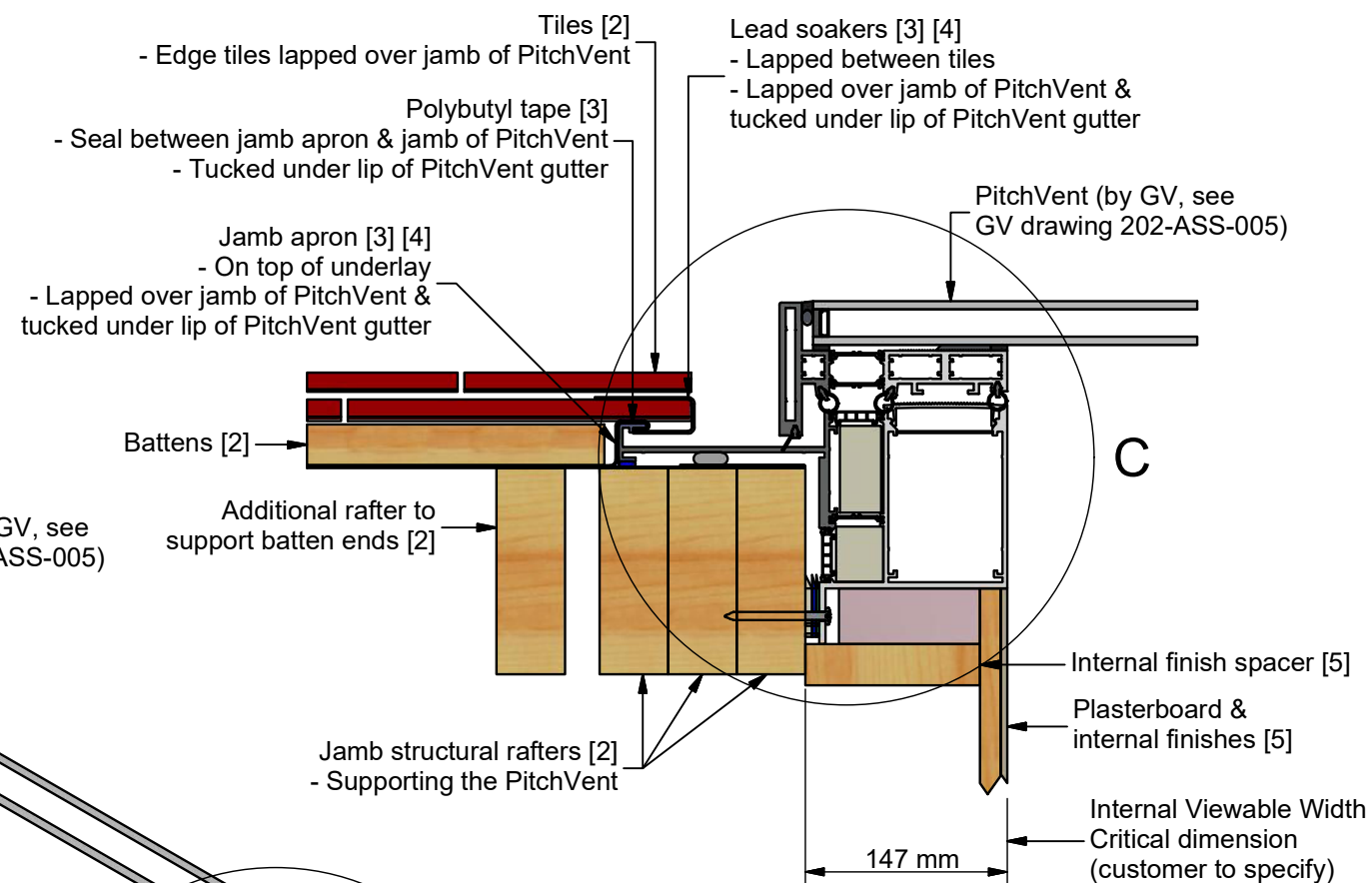
[6] Fixings:
 - Woodscrews & a selection of plastic packers supplied by GV

Please note:

These products can be very heavy. GV strongly recommends that a structural engineer is consulted when designing the structure(s) that will support the PitchVent & the surrounding roof. The roofing materials & construction shown in these details are presented as an example only. This drawing does not constitute a structural proposal.

Jamb Section

By others unless otherwise specified



Internal finish spacer [5]
 Plasterboard & internal finishes [5]

Cill structural trimmers [2]
 - Supporting the PitchVent
 - Supporting the cill lead flashing to prevent sagging & pooling

Cill tilting fillet
 - Minimum 5° fall over fillet
 - On top of underlay

Cill lead flashing [3] [4]
 - Lapped under cill of PitchVent
 - Lapped over tiles below PitchVent

Underlay

Tiles [2]

Rafters [2]

Batts [2]

**GLAZING
VISION**

Saw Mills Road
Diss
Norfolk
IP22 4RG

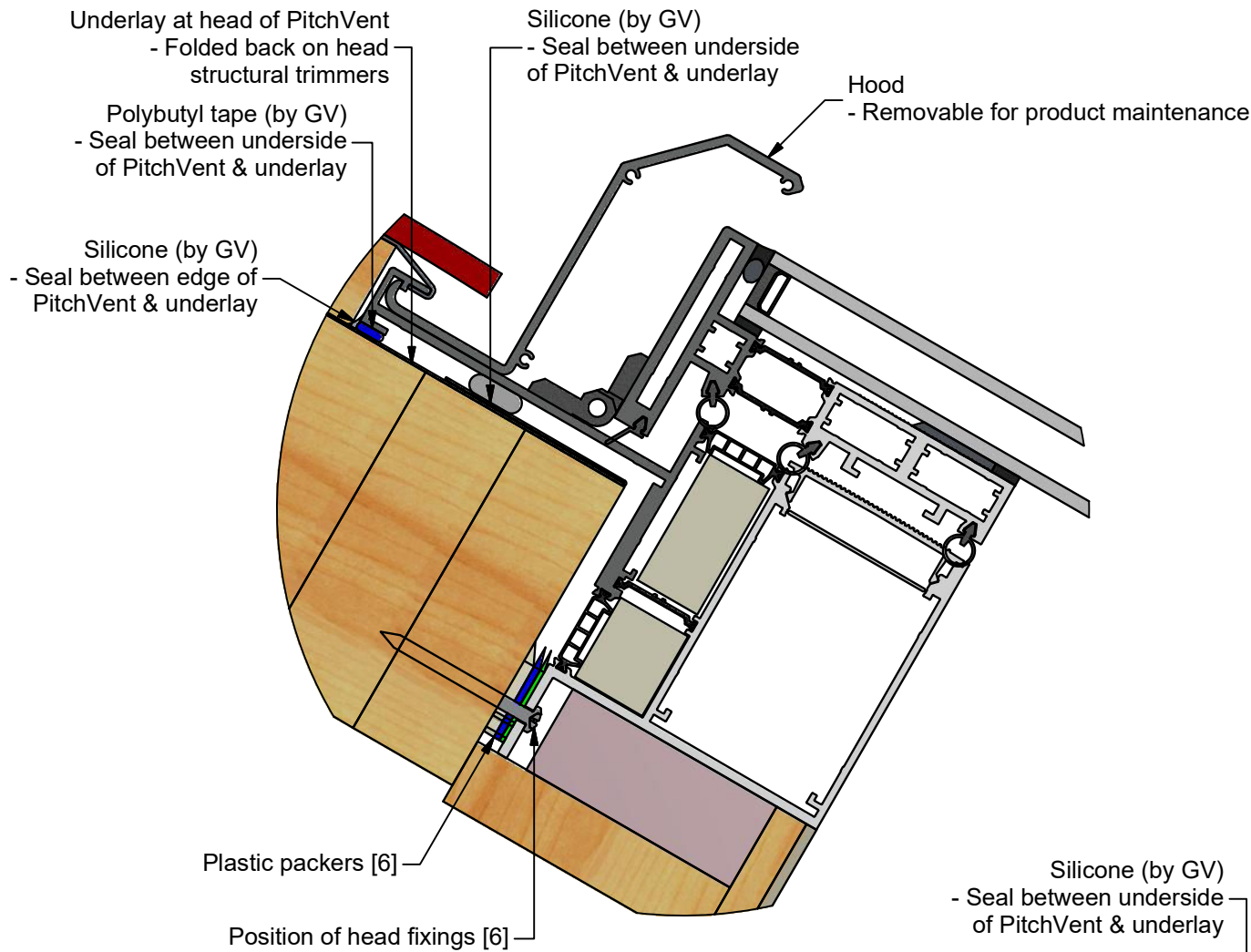
Tel: +44 (0)333 8000 881
Fax: +44 (0)333 8000 882
Email: sales@glazingvision.co.uk
Website: www.glazingvision.co.uk

IT IS GLAZING VISION'S POLICY TO CONTINUOUSLY DEVELOP AND IMPROVE OUR PRODUCTS. WE THEREFORE RESERVE THE RIGHT TO MODIFY OR CHANGE THE DETAIL DESIGN AT OUR DISCRETION AND WITHOUT PRIOR NOTICE. THIS DRAWING IS COPYRIGHT AND THE SOLE PROPERTY OF GLAZING VISION LTD. THE DESIGNS/INFORMATION IT CONTAINS ARE PRIVATE AND CONFIDENTIAL. IT MUST NOT BE COPIED, EXHIBITED OR COMMUNICATED TO THIRD PARTIES FOR ANY PURPOSE OTHER THAN THAT FOR WHICH IT WAS ISSUED WITHOUT THE WRITTEN PERMISSION OF GLAZING VISION LTD.

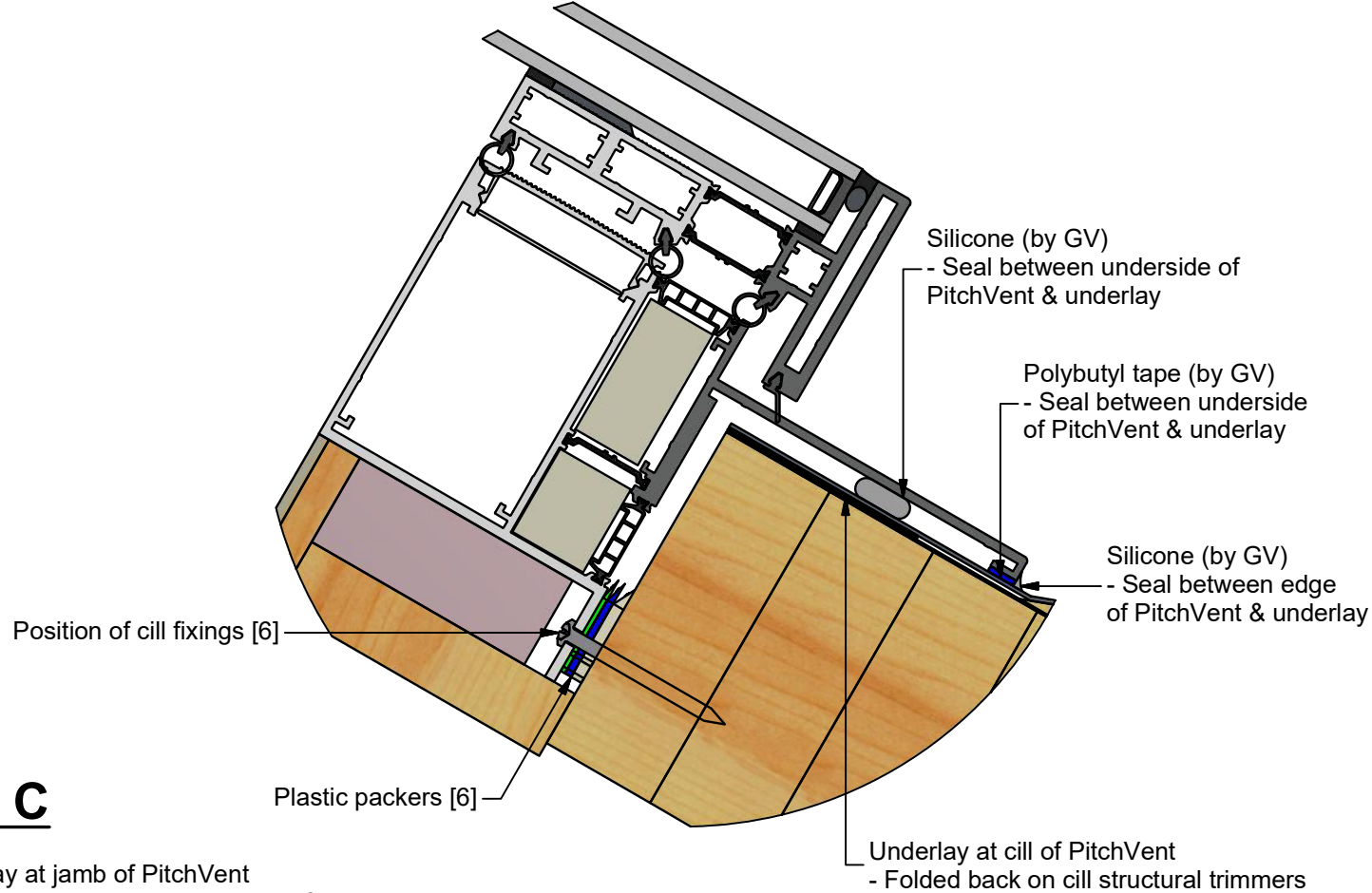
Third angle projection unless otherwise noted.
 Tolerances:
 Whole numbers = $\pm 1\text{mm}$
 One decimal place = $\pm 0.5\text{mm}$
 Two decimal places = $\pm 0.2\text{mm}$
 All angles 90 ± 0.5 degrees unless specified
IF IN DOUBT - ASK! DO NOT SCALE
Supplier to deburr & remove sharp corners

Rev	Revision Description	Drawn/Date	Product: 202 - PitchVent	Checked By:
-	Initial Release	HL 02.02.18	Description: PitchVent Standard Installation GA	JSL
			Materials: As site hardware list	Check Date:
			Finish: N/A	02.02.18
			Weight: N/A	
			Quantity: N/A	
			Scale: N/A	
			Drawn By: HL	
			Drawn Date: 02.02.18	
			Drawing No: 202-ASS-002 (1 of 2)	

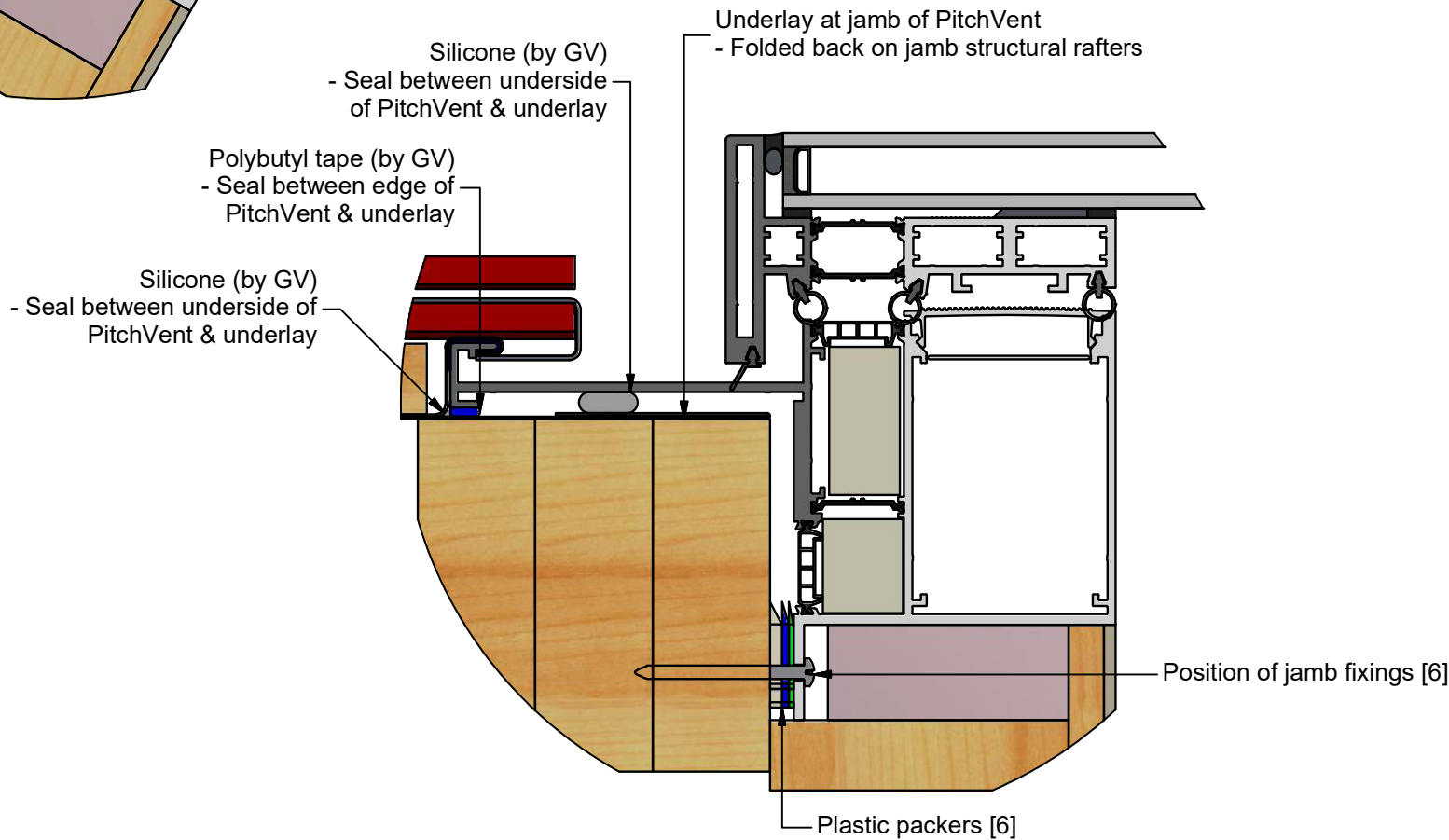
Detail A



Detail B



Detail C



GLAZING VISION

Saw Mills Road
Diss
Norfolk
IP22 4RG

Tel: +44 (0)333 8000 881
Fax: +44 (0)333 8000 882
Email: sales@glazingvision.co.uk
Website: www.glazingvision.co.uk

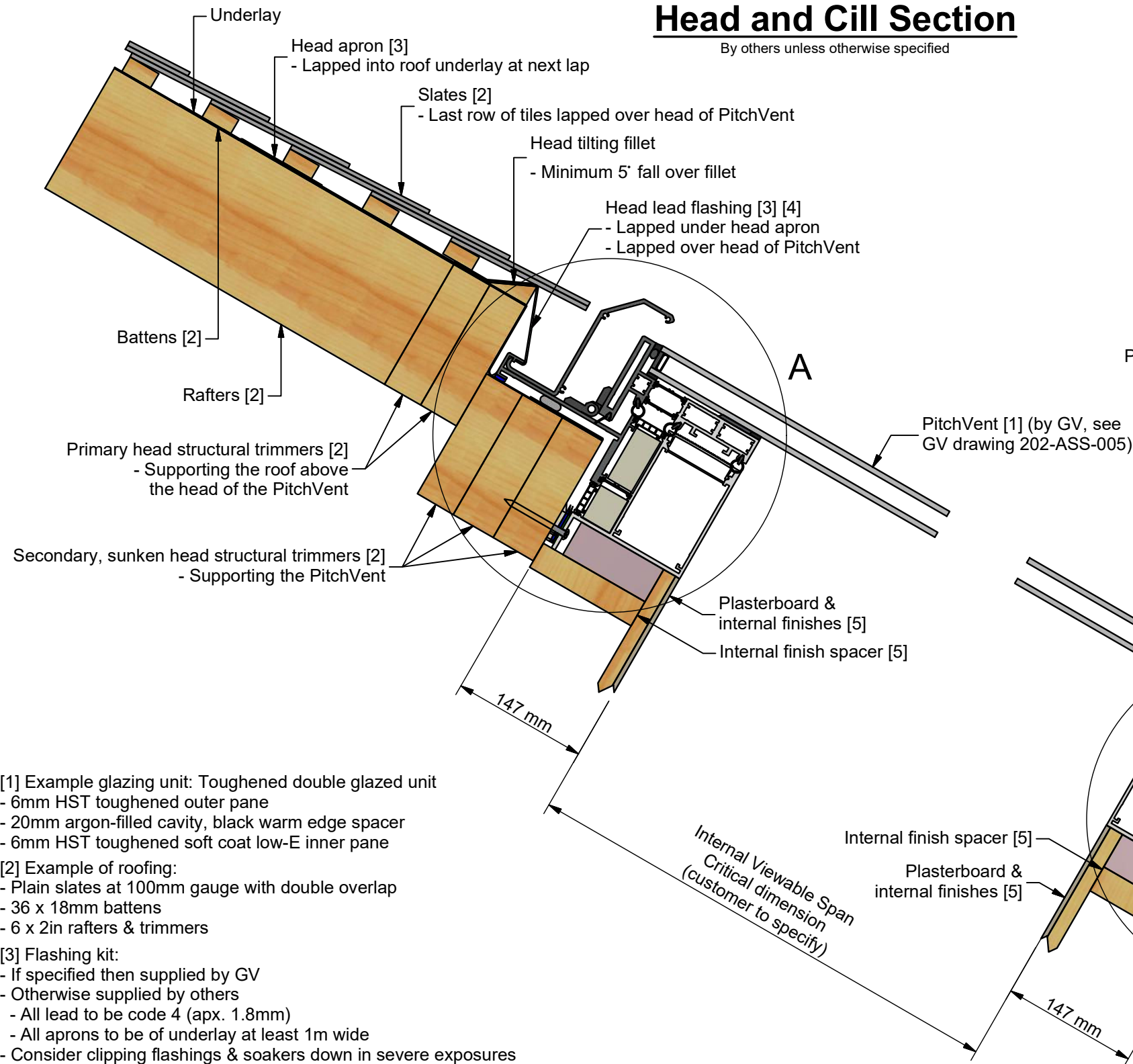
IT IS GLAZING VISION'S POLICY TO CONTINUOUSLY DEVELOP AND IMPROVE OUR PRODUCTS. WE THEREFORE RESERVE THE RIGHT TO MODIFY OR CHANGE THE DETAIL DESIGN AT OUR DISCRETION AND WITHOUT PRIOR NOTICE. THIS DRAWING IS COPYRIGHT AND THE SOLE PROPERTY OF GLAZING VISION LTD. THE DESIGNS/INFORMATION IT CONTAINS ARE PRIVATE AND CONFIDENTIAL. IT MUST NOT BE COPIED, EXHIBITED OR COMMUNICATED TO THIRD PARTIES FOR ANY PURPOSE OTHER THAN THAT FOR WHICH IT WAS ISSUED WITHOUT THE WRITTEN PERMISSION OF GLAZING VISION LTD.

Third angle projection unless otherwise noted.
Tolerances:
Whole numbers = $\pm 1\text{mm}$
One decimal place = $\pm 0.5\text{mm}$
Two decimal places = $\pm 0.2\text{mm}$
All angles 90 ± 0.5 degrees unless specified
IF IN DOUBT - ASK! DO NOT SCALE
Supplier to deburr & remove sharp corners

Rev	Revision Description	Drawn/Date	Product: 202 - PitchVent	Checked By:
-	Initial Release	HL 02.02.18	Description: PitchVent Standard Installation GA	JSL
			Materials: As site hardware list	Check Date:
			Finish: N/A	02.02.18
			Weight: N/A	
			Quantity: N/A	
			Scale: N/A	
			Drawn By: HL	
			Drawn Date: 02.02.18	
			Drawing No: 202-ASS-002 (2 of 2)	

Head and Cill Section

By others unless otherwise specified



[1] Example glazing unit: Toughened double glazed unit
 - 6mm HST toughened outer pane
 - 20mm argon-filled cavity, black warm edge spacer
 - 6mm HST toughened soft coat low-E inner pane

[2] Example of roofing:
 - Plain slates at 100mm gauge with double overlap
 - 36 x 18mm battens
 - 6 x 2in rafters & trimmers

[3] Flashing kit:
 - If specified then supplied by GV
 - Otherwise supplied by others
 - All lead to be code 4 (apx. 1.8mm)
 - All aprons to be of underlay at least 1m wide
 - Consider clipping flashings & soakers down in severe exposures

[4] Mortar beds are NOT suitable for use with this product
 - Slates may need to be removed for product maintenance

[5] Example of internal finish:
 - Plasterboard spaced away from the rafters/structural trimmers using timber

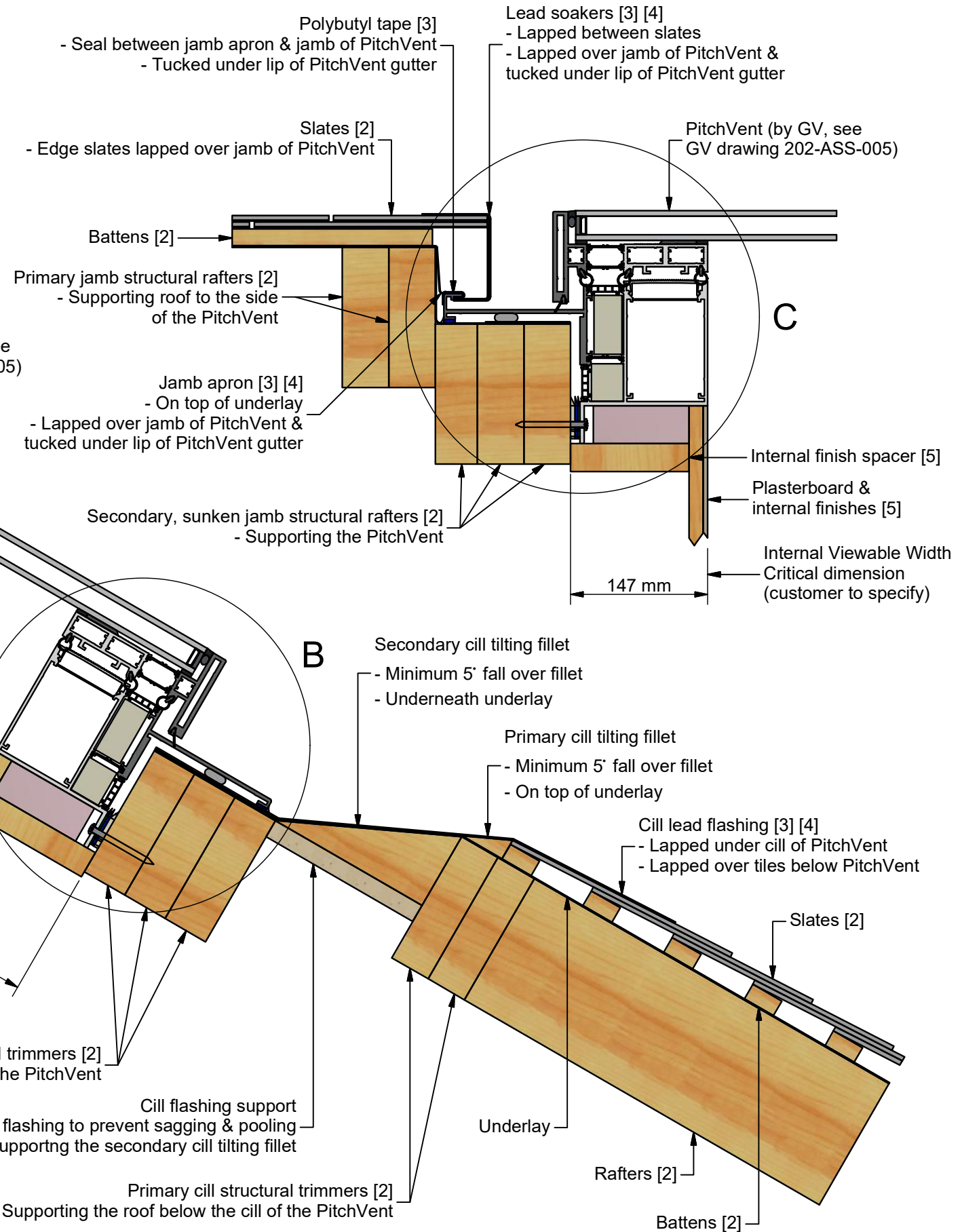
[6] Fixings:
 - Woodscrews & a selection of plastic packers supplied by GV

Please note:

These products can be very heavy. GV strongly recommends that a structural engineer is consulted when designing the structure(s) that will support the PitchVent & the surrounding roof. The roofing materials & construction shown in these details are presented as an example only. This drawing does not constitute a structural proposal.

Jamb Section

By others unless otherwise specified



**GLAZING
VISION**

Saw Mills Road
Diss
Norfolk
IP22 4RG

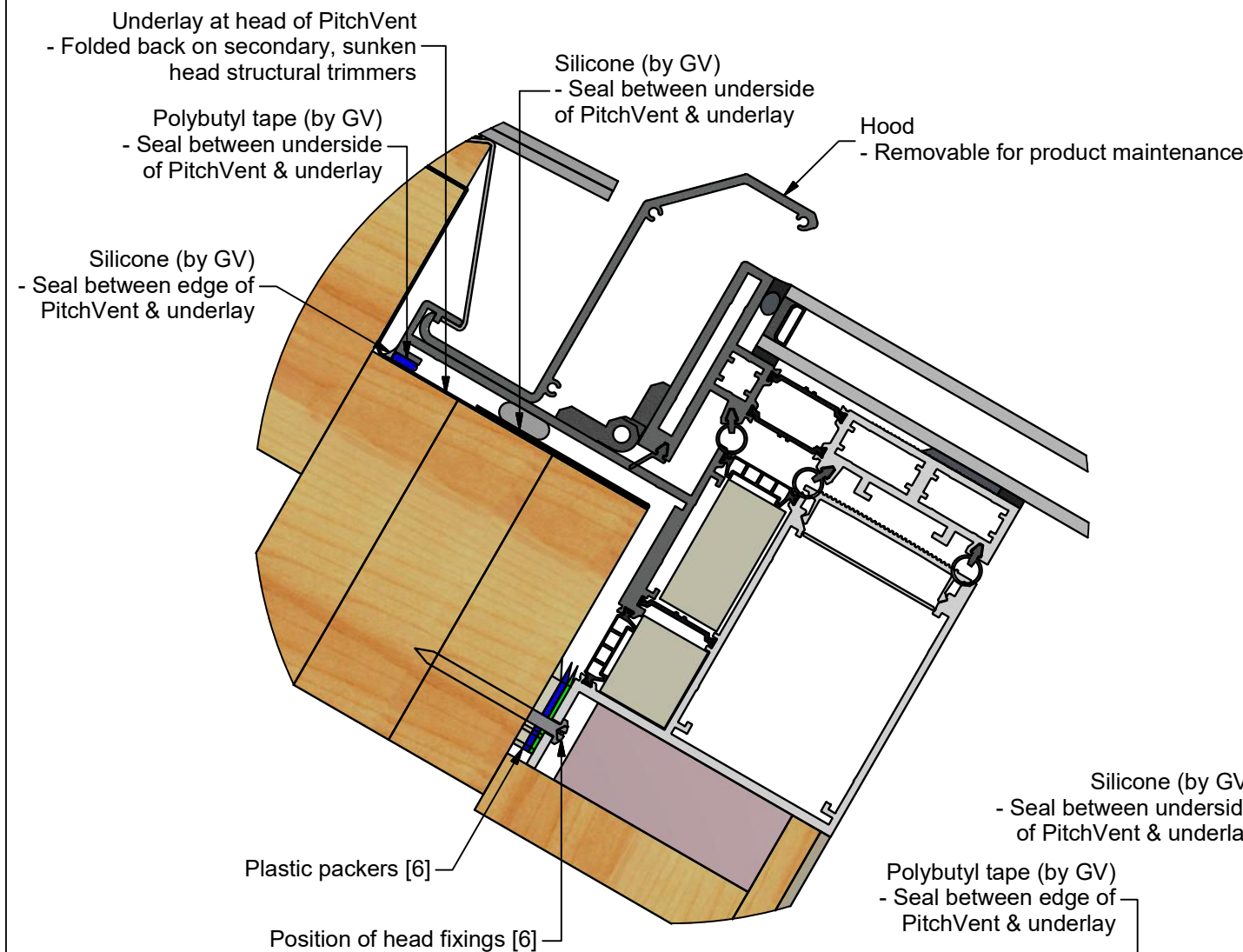
Tel: +44 (0)333 8000 881
Fax: +44 (0)333 8000 882
Email: sales@glazingvision.co.uk
Website: www.glazingvision.co.uk

IT IS GLAZING VISION'S POLICY TO CONTINUOUSLY DEVELOP AND IMPROVE OUR PRODUCTS. WE THEREFORE RESERVE THE RIGHT TO MODIFY OR CHANGE THE DETAIL DESIGN AT OUR DISCRETION AND WITHOUT PRIOR NOTICE. THIS DRAWING IS COPYRIGHT AND THE SOLE PROPERTY OF GLAZING VISION LTD. THE DESIGNS/INFORMATION IT CONTAINS ARE PRIVATE AND CONFIDENTIAL. IT MUST NOT BE COPIED, EXHIBITED OR COMMUNICATED TO THIRD PARTIES FOR ANY PURPOSE OTHER THAN THAT FOR WHICH IT WAS ISSUED WITHOUT THE WRITTEN PERMISSION OF GLAZING VISION LTD.

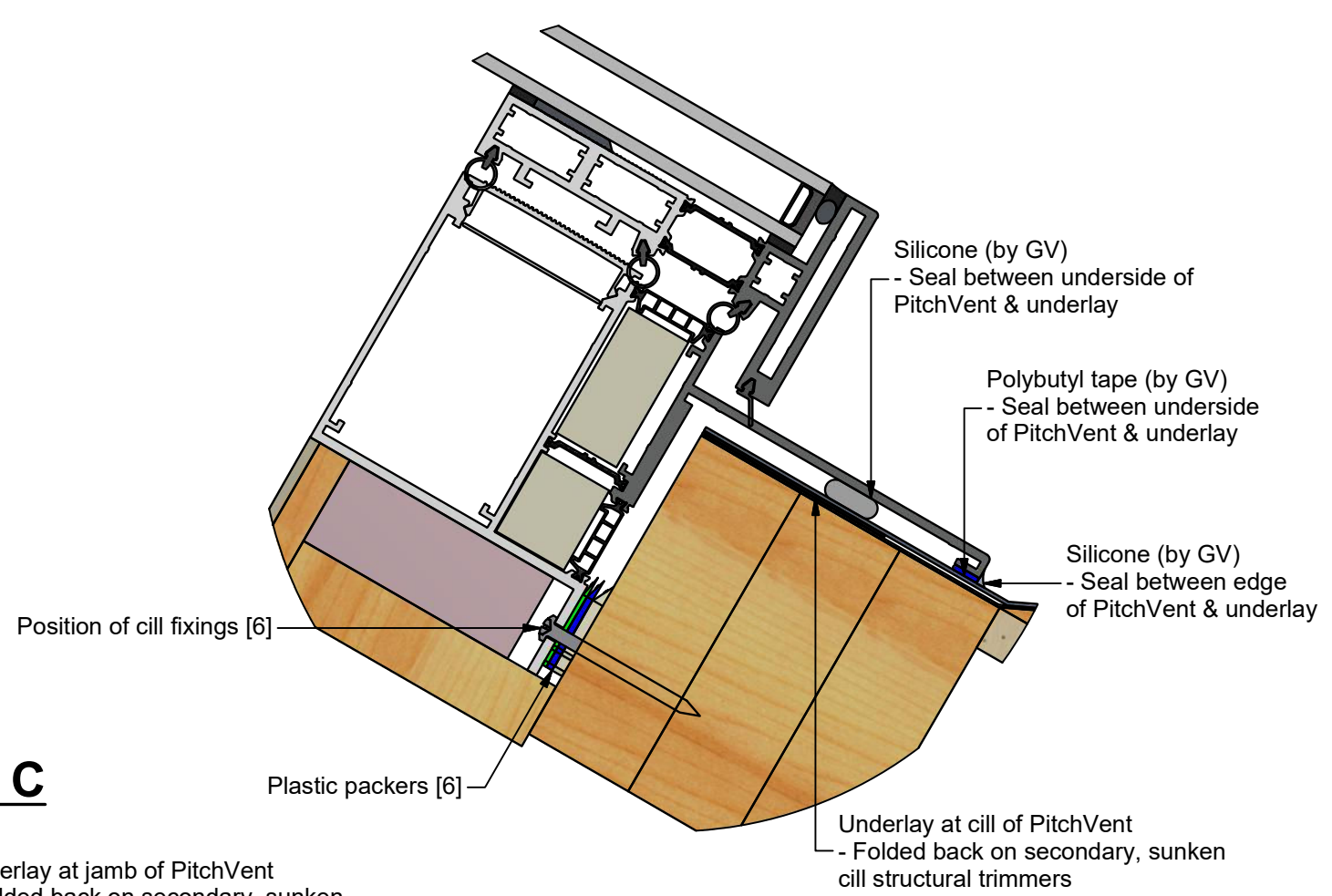
Third angle projection unless otherwise noted.
 Tolerances:
 Whole numbers = $\pm 1\text{mm}$
 One decimal place = $\pm 0.5\text{mm}$
 Two decimal places = $\pm 0.2\text{mm}$
 All angles 90 ± 0.5 degrees unless specified
IF IN DOUBT - ASK! DO NOT SCALE
Supplier to deburr & remove sharp corners

Rev	Revision Description	Drawn/Date	Product: 202 - PitchVent	Checked By:
-	Initial Release	HL 02.02.18	Description: PitchVent Sunken Installation GA	JSL
			Materials: As site hardware list	Check Date:
			Finish: N/A	02.02.18
			Weight: N/A	
			Quantity: N/A	
			Scale: N/A	
			Drawn By: HL	
			Drawn Date: 02.02.18	
			Drawing No: 202-ASS-003 (1 of 2)	

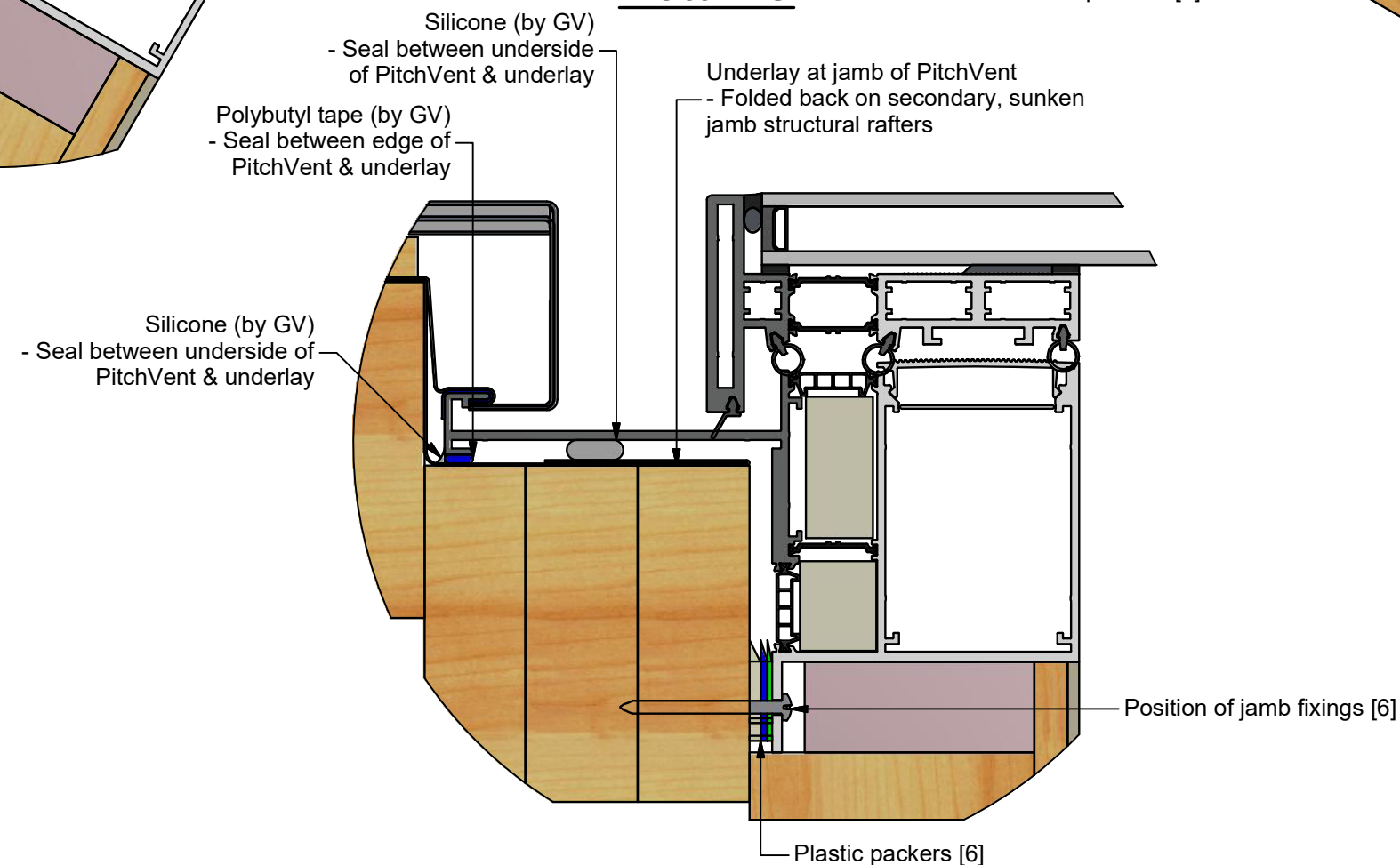
Detail A



Detail B

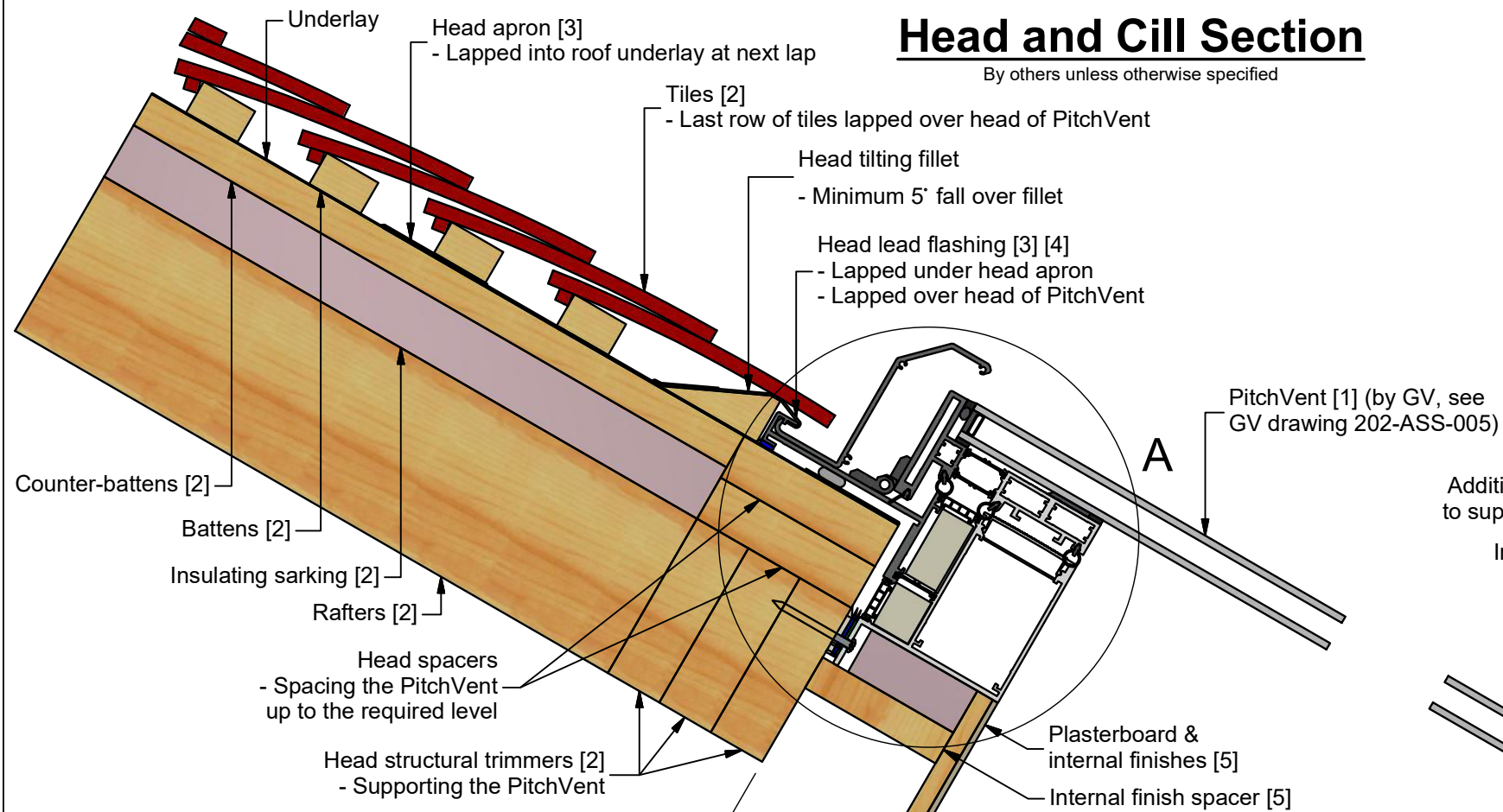


Detail C



Head and Cill Section

By others unless otherwise specified



[1] Example glazing unit: Toughened double glazed unit
 - 6mm HST toughened outer pane
 - 20mm argon-filled cavity, black warm edge spacer
 - 6mm HST toughened soft coat low-E inner pane

[2] Example of roofing:
 - Plain tiles at 120mm gauge with double overlap
 - 50 x 30mm battens & counter-battens
 - 6 x 2in rafters and trimmers
 - 50mm insulating sarking

[3] Flashing kit:
 - If specified then supplied by GV
 - Otherwise supplied by others
 - All lead to be code 4 (apx. 1.8mm)
 - All aprons to be of underlay at least 1m wide
 - Consider clipping flashings and soakers down in severe exposures

[4] Mortar beds are NOT suitable for use with this product
 - Tiles may need to be removed for product maintenance

[5] Example of internal finish:
 - Plasterboard spaced away from the rafters/structural trimmers using timber

[6] Fixings:
 - Woodscrews and a selection of plastic packers supplied by GV

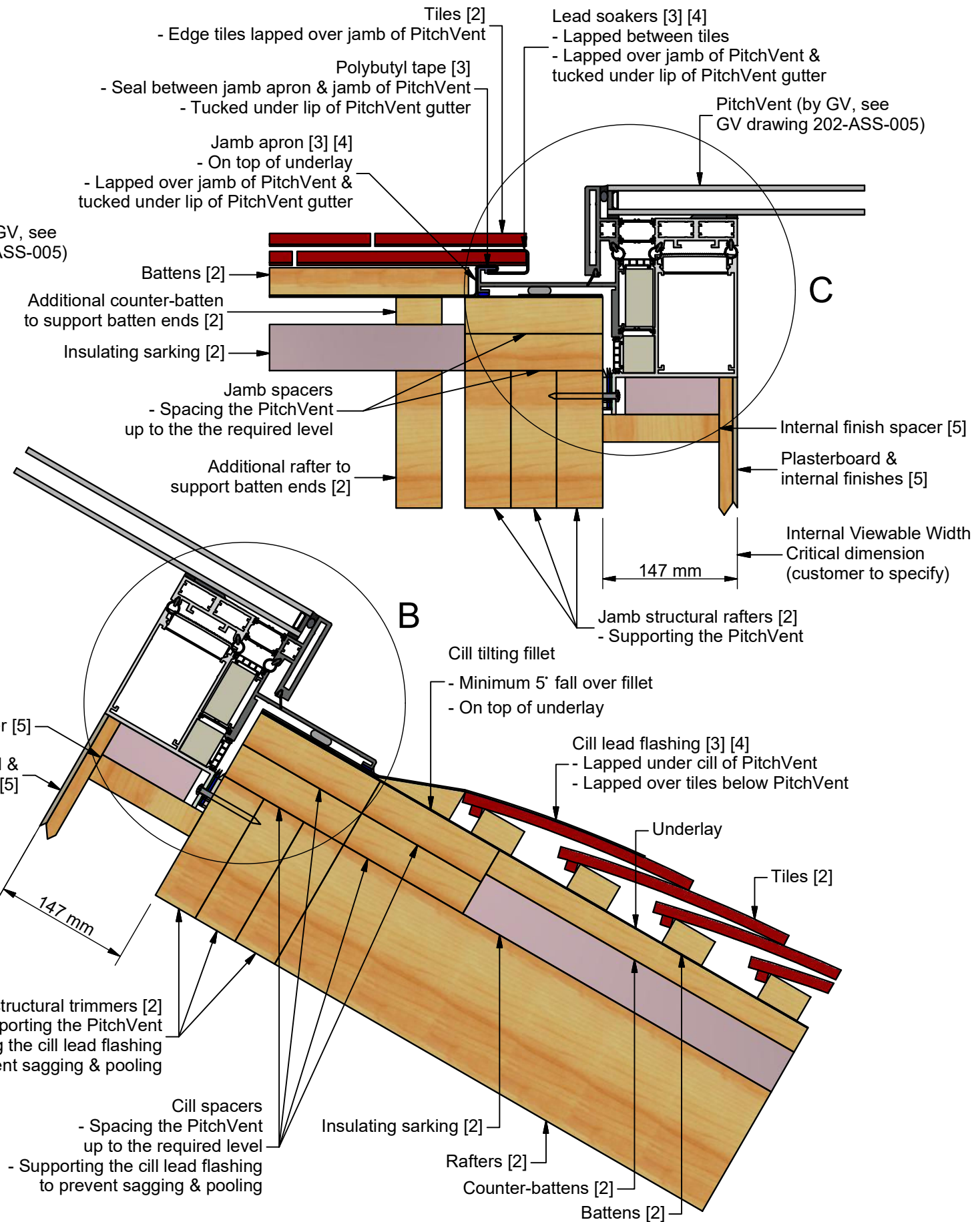
The *Raised Installation* shown here is a raised version of the *Standard Installation* (see GV drawing 202-ASS-002), in that the PitchVent sits on the same level as the surrounding battens. If attempting a raised version of the *Sunken Installation* (see GV drawing 202-ASS-003), where the PitchVent sits below the level of the surrounding battens, note that:
 - A secondary silting fillet should be used (see GV drawing 202-ASS-003).
 - The underlay should be dropped to lap under the PitchVent around all edges (see GV drawing 202-ASS-003).

Please note:

These products can be very heavy. GV strongly recommends that a structural engineer is consulted when designing the structure(s) that will support the PitchVent and the surrounding roof. The roofing materials & construction shown in these details are presented as an example only. This drawing does not constitute a structural proposal.

Jamb Section

By others unless otherwise specified



**GLAZING
VISION**

Saw Mills Road
Diss
Norfolk
IP22 4RG

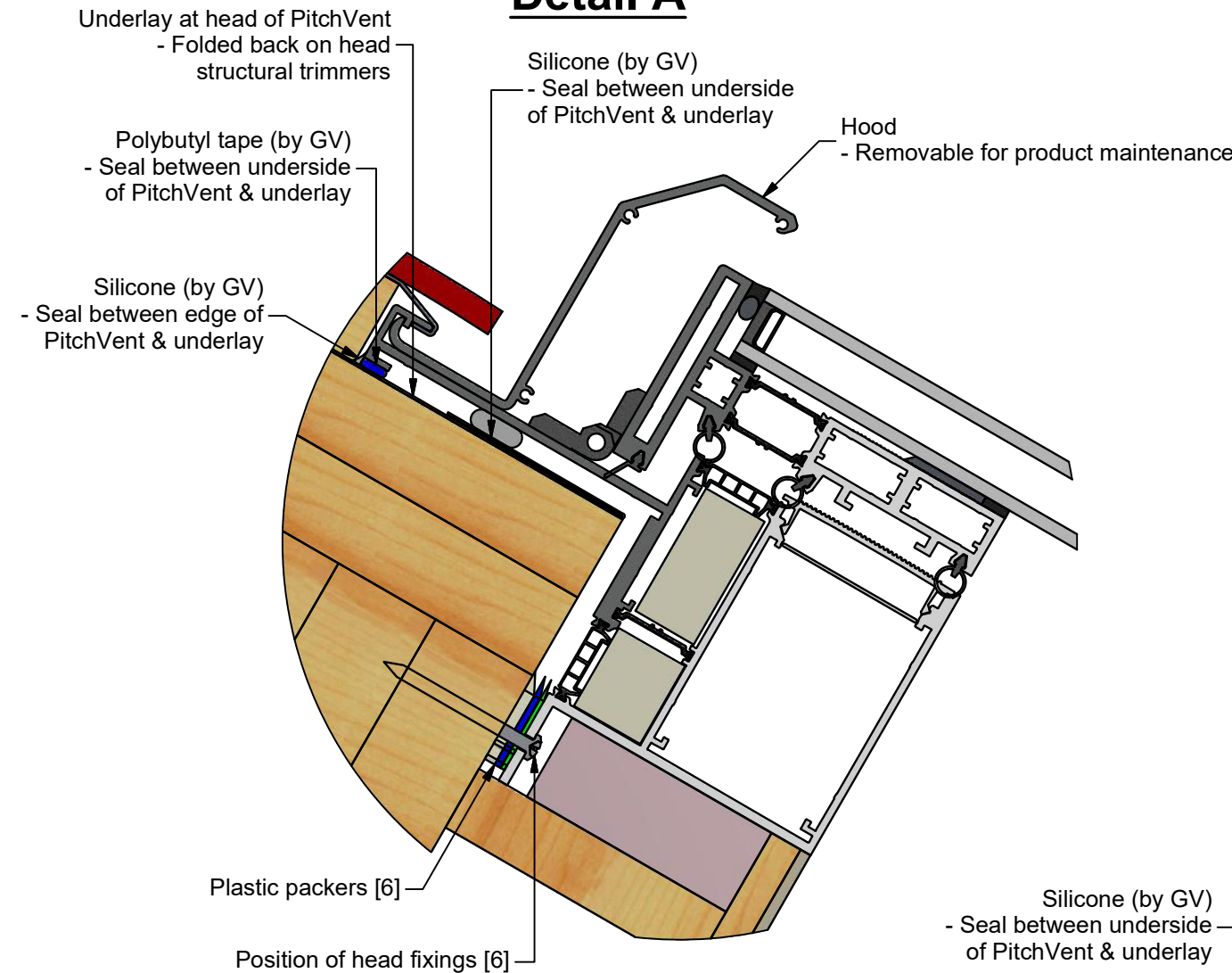
Tel: +44 (0)333 8000 881
Fax: +44 (0)333 8000 882
Email: sales@glazingvision.co.uk
Website: www.glazingvision.co.uk

IT IS GLAZING VISION'S POLICY TO CONTINUOUSLY DEVELOP AND IMPROVE OUR PRODUCTS. WE THEREFORE RESERVE THE RIGHT TO MODIFY OR CHANGE THE DETAIL DESIGN AT OUR DISCRETION AND WITHOUT PRIOR NOTICE. THIS DRAWING IS COPYRIGHT AND THE SOLE PROPERTY OF GLAZING VISION LTD. THE DESIGNS/INFORMATION IT CONTAINS ARE PRIVATE AND CONFIDENTIAL. IT MUST NOT BE COPIED, EXHIBITED OR COMMUNICATED TO THIRD PARTIES FOR ANY PURPOSE OTHER THAN THAT FOR WHICH IT WAS ISSUED WITHOUT THE WRITTEN PERMISSION OF GLAZING VISION LTD.

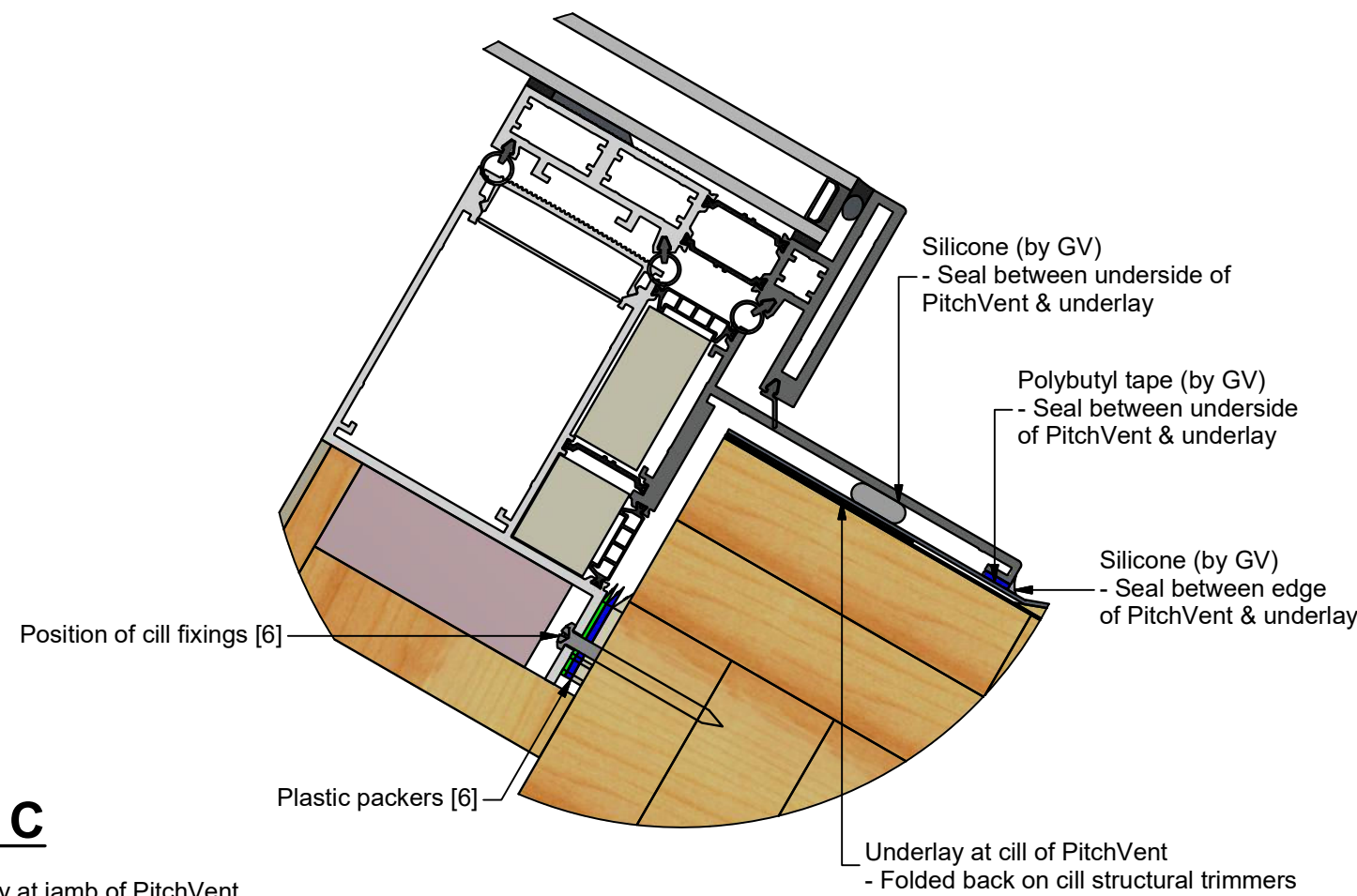
Third angle projection unless otherwise noted.
 Tolerances:
 Whole numbers = $\pm 1\text{mm}$
 One decimal place = $\pm 0.5\text{mm}$
 Two decimal places = $\pm 0.2\text{mm}$
 All angles 90 ± 0.5 degrees unless specified
IF IN DOUBT - ASK! DO NOT SCALE
Supplier to deburr & remove sharp corners

Rev	Revision Description	Drawn/Date	Product: 202 - PitchVent	Checked By:
-	Initial Release	HL 02.02.18	Description: PitchVent Raised Installation GA	JSL
			Materials: As site hardware list	Check Date:
			Finish: N/A	02.02.18
			Weight: N/A	
			Quantity: N/A	
			Scale: N/A	
			Drawn By: HL	
			Drawn Date: 02.02.18	
			Drawing No: 202-ASS-004 (1 of 2)	

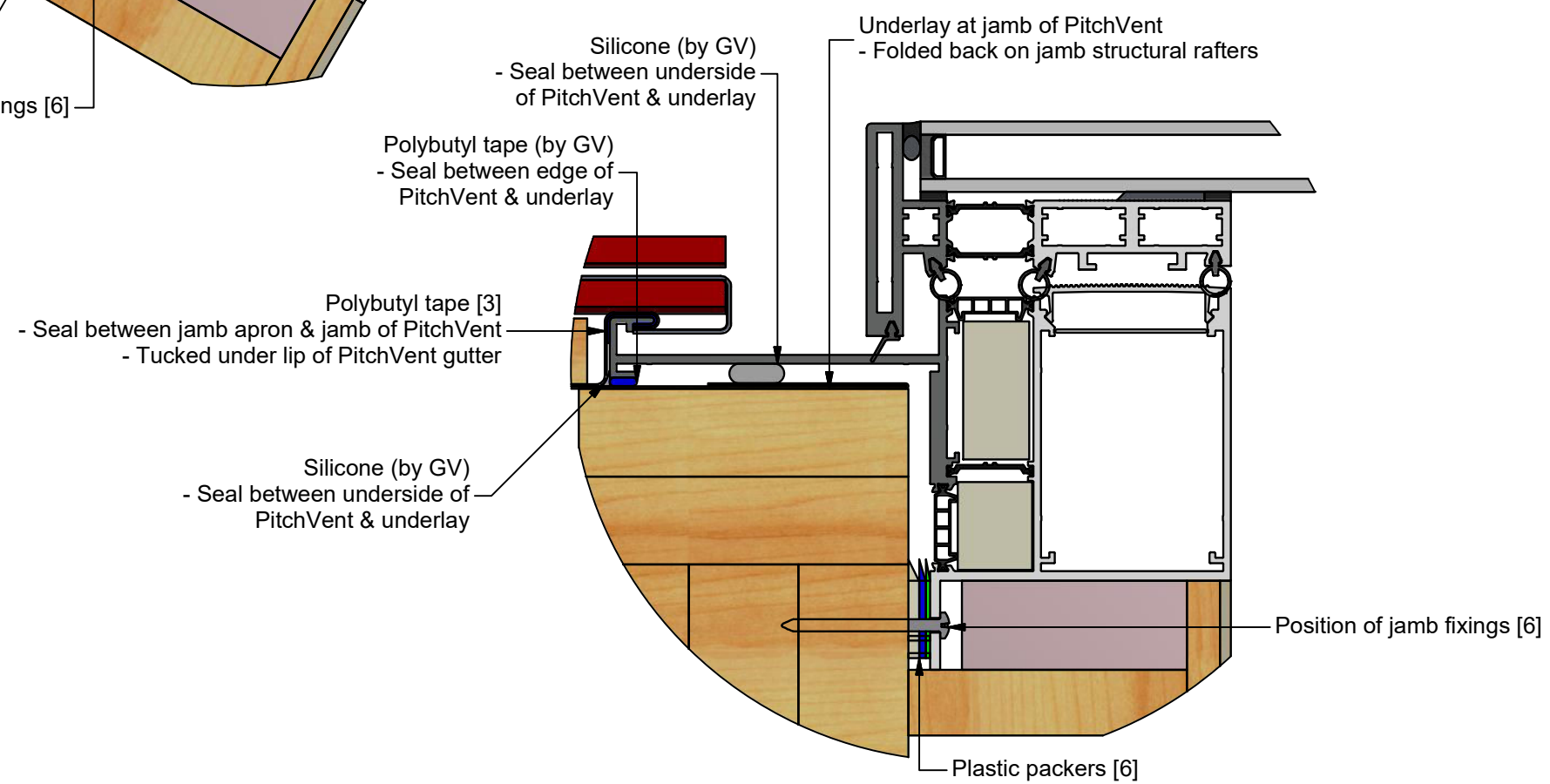
Detail A



Detail B



Detail C



Saw Mills Road
Diss
Norfolk
IP22 4RG

Tel: +44 (0)333 8000 881
Fax: +44 (0)333 8000 882
Email: sales@glazingvision.co.uk
Website: www.glazingvision.co.uk

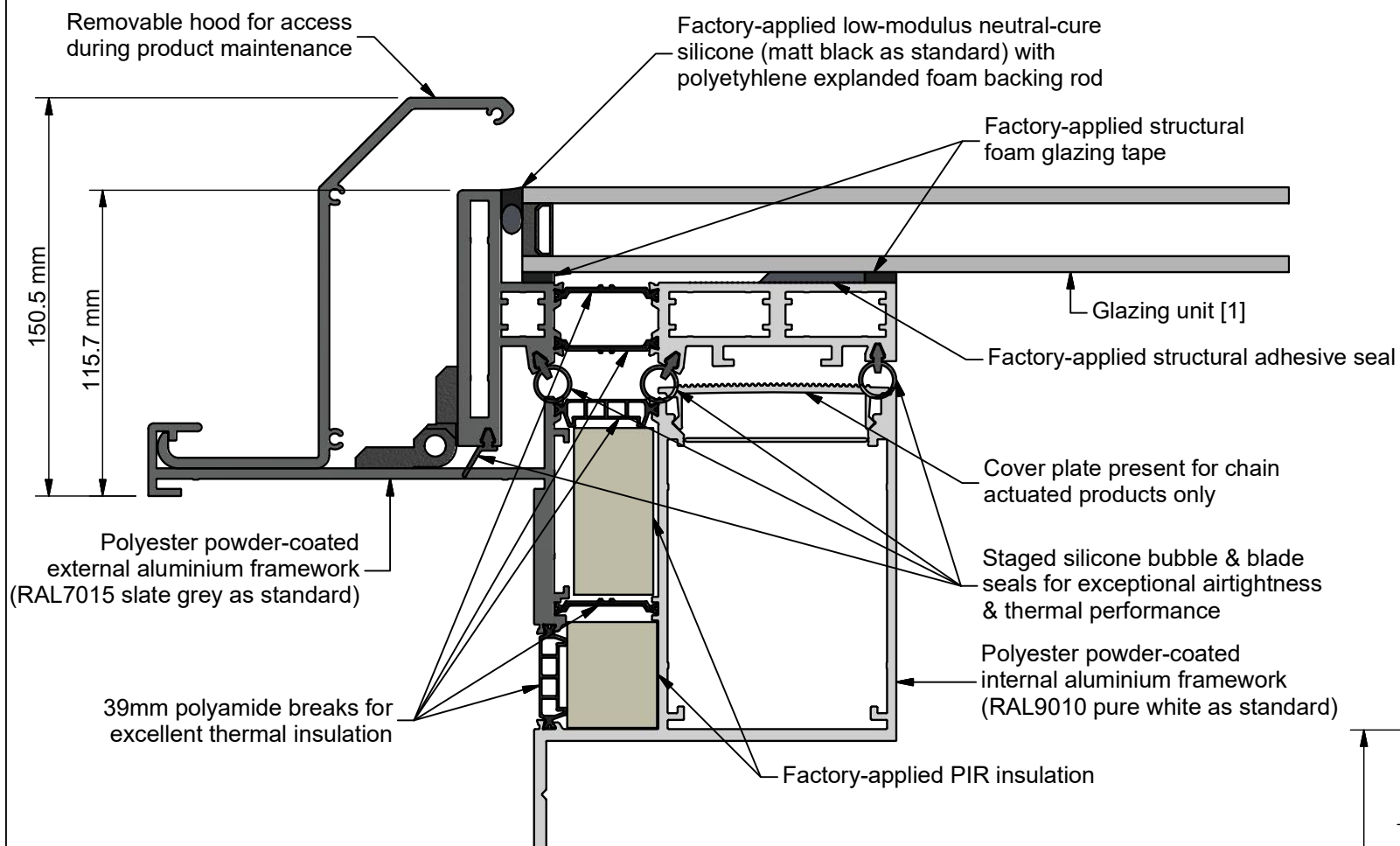
IT IS GLAZING VISION'S POLICY TO CONTINUOUSLY DEVELOP AND IMPROVE OUR PRODUCTS. WE THEREFORE RESERVE THE RIGHT TO MODIFY OR CHANGE THE DETAIL DESIGN AT OUR DISCRETION AND WITHOUT PRIOR NOTICE. THIS DRAWING IS COPYRIGHT AND THE SOLE PROPERTY OF GLAZING VISION LTD. THE DESIGNS/INFORMATION IT CONTAINS ARE PRIVATE AND CONFIDENTIAL. IT MUST NOT BE COPIED, EXHIBITED OR COMMUNICATED TO THIRD PARTIES FOR ANY PURPOSE OTHER THAN THAT FOR WHICH IT WAS ISSUED WITHOUT THE WRITTEN PERMISSION OF GLAZING VISION LTD.

Third angle projection unless otherwise noted.
Tolerances:
Whole numbers = $\pm 1\text{mm}$
One decimal place = $\pm 0.5\text{mm}$
Two decimal places = $\pm 0.2\text{mm}$
All angles 90 ± 0.5 degrees unless specified
IF IN DOUBT - ASK! DO NOT SCALE
Supplier to deburr & remove sharp corners

Rev	Revision Description	Drawn/Date	Product: 202 - PitchVent	Checked By:
-	Initial Release	HL 02.02.18	Description: PitchVent Raised Installation GA	JSL
			Materials: As site hardware list	Check Date:
			Finish: N/A	02.02.18
			Weight: N/A	
			Quantity: N/A	
			Scale: N/A	
			Drawn By: HL	
			Drawn Date: 02.02.18	
			Drawing No: 202-ASS-004 (2 of 2)	

GV Standard PitchVent Small Frame

Used for glass between 26mm & 34.8mm thickness
(typically used for double glazed units)



[1] Example glazing unit: Toughened double glazed unit
- 6mm HST toughened outer pane
- 20mm argon-filled cavity, black warm edge spacer
- 6mm HST toughened soft coat low-E inner pane

[2] Example glazing unit: Toughened triple glazed unit
- 6mm HST toughened outer pane
- 16mm argon-filled cavity, black warm edge spacer
- 6mm HST toughened soft coat low-E mid pane
- 16mm argon-filled cavity, black warm edge spacer
- 6mm HST toughened soft coat low-E inner pane

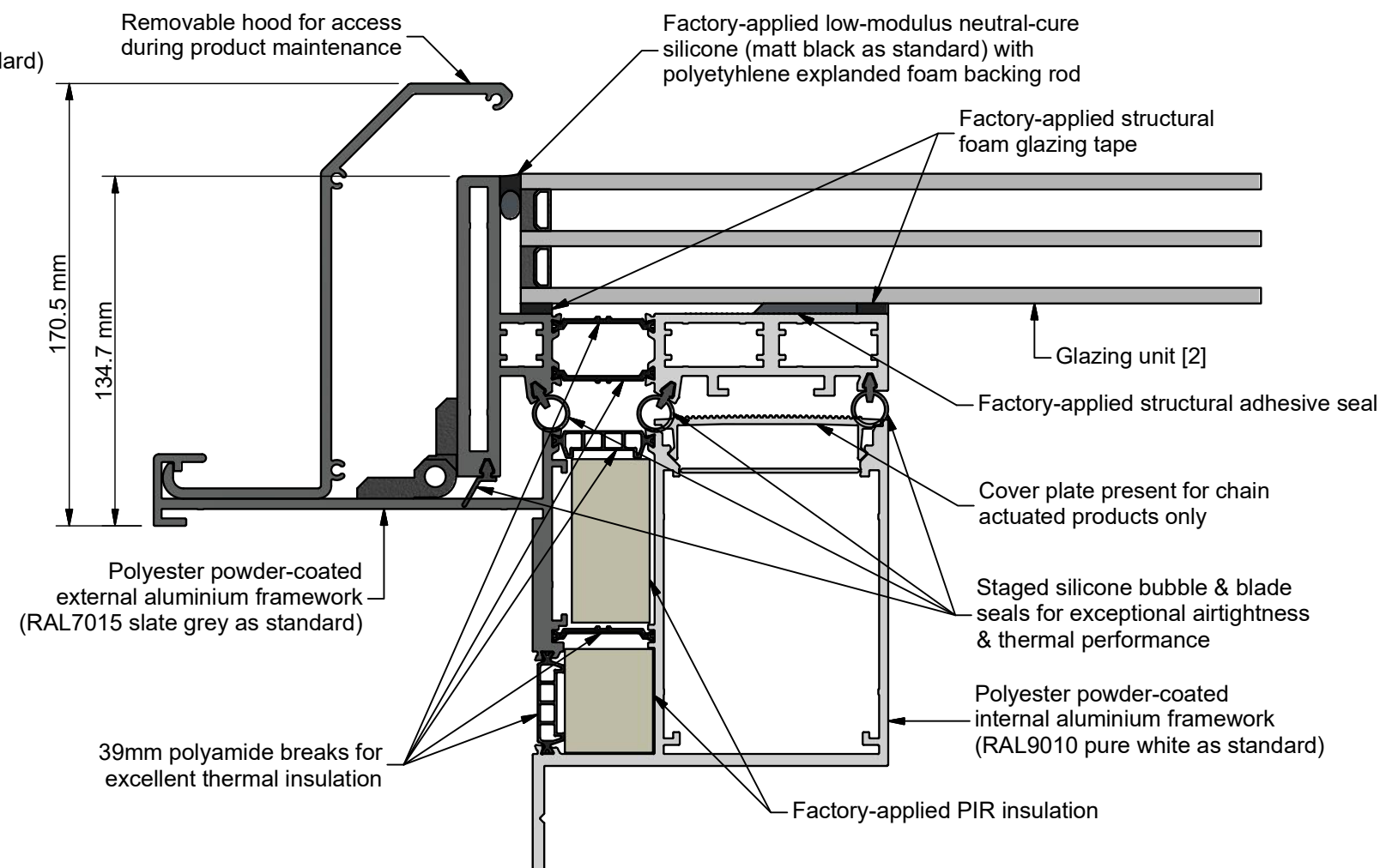
For Both Frames

For general dimensions, see GV drawing
202-ASS-001

For installation information, see GV drawings
202-ASS-002
202-ASS-003
202-ASS-004

GV Standard PitchVent Large Frame

Used for glass between 44mm & 52.8mm thickness
(typically used for triple glazed units)



**GLAZING
VISION**

Saw Mills Road
Diss
Norfolk
IP22 4RG
Tel: +44 (0)333 8000 881
Fax: +44 (0)333 8000 882
Email: sales@glazingvision.co.uk
Website: www.glazingvision.co.uk

IT IS GLAZING VISION'S POLICY TO CONTINUOUSLY DEVELOP AND IMPROVE OUR PRODUCTS. WE THEREFORE RESERVE THE RIGHT TO MODIFY OR CHANGE THE DETAIL DESIGN AT OUR DISCRETION AND WITHOUT PRIOR NOTICE. THIS DRAWING IS COPYRIGHT AND THE SOLE PROPERTY OF GLAZING VISION LTD. THE DESIGNS/INFORMATION IT CONTAINS ARE PRIVATE AND CONFIDENTIAL. IT MUST NOT BE COPIED, EXHIBITED OR COMMUNICATED TO THIRD PARTIES FOR ANY PURPOSE OTHER THAN THAT FOR WHICH IT WAS ISSUED WITHOUT THE WRITTEN PERMISSION OF GLAZING VISION LTD.

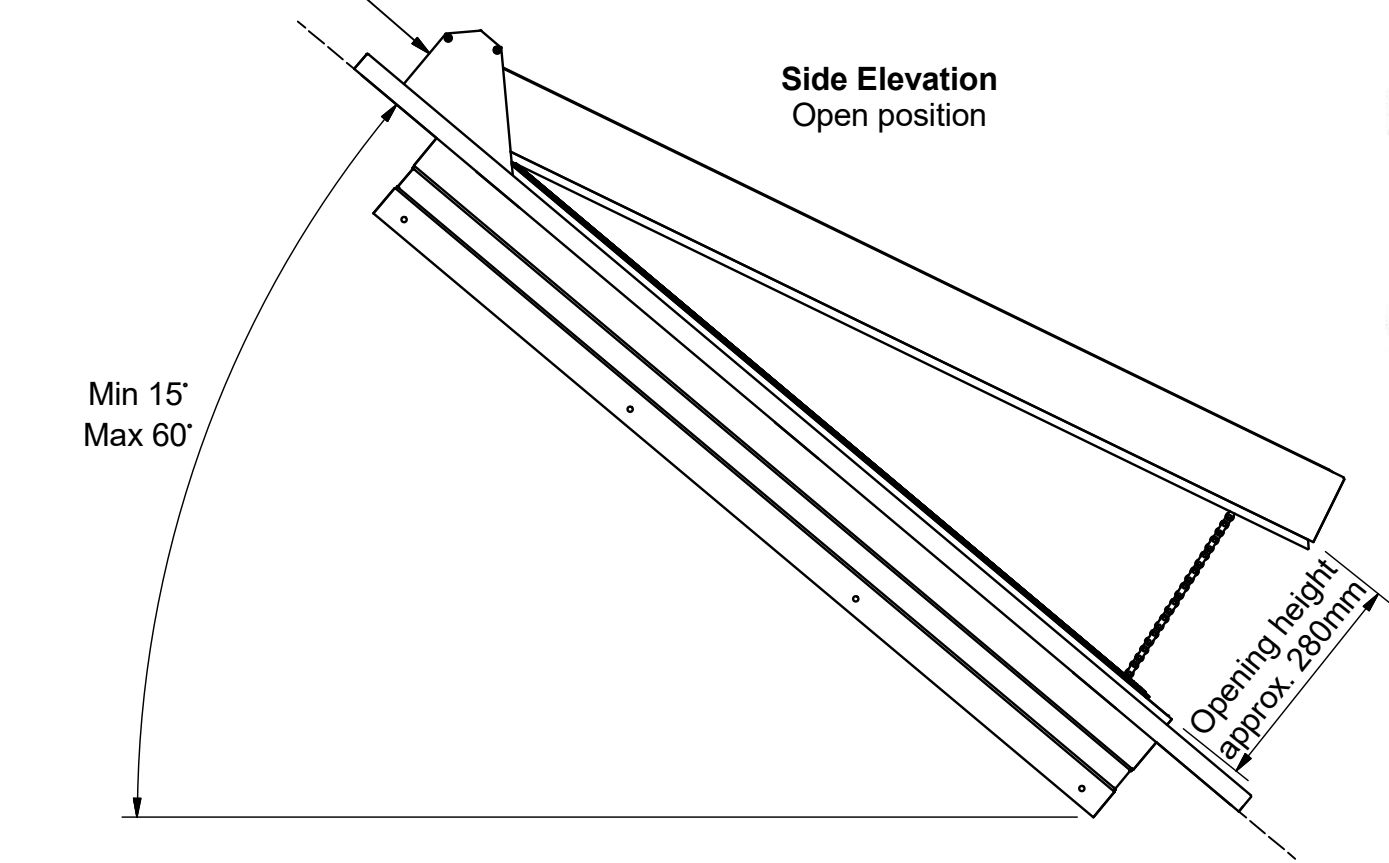
Third angle projection unless otherwise noted.
Tolerances:
Whole numbers = $\pm 1\text{mm}$
One decimal place = $\pm 0.5\text{mm}$
Two decimal places = $\pm 0.2\text{mm}$
All angles 90 ± 0.5 degrees unless specified
IF IN DOUBT - ASK! DO NOT SCALE
Supplier to deburr & remove sharp corners

Rev	Revision Description	Drawn/Date	Product: 202 - PitchVent	Checked By:
-	Initial Release	HL 02.02.18	Description: PitchVent Section Views	JSL
			Materials: N/A	Check Date:
			Finish: N/A	02.02.18
			Weight: N/A	
			Quantity: N/A	
			Scale: N/A	
			Drawn By: HL	
			Drawn Date: 02.02.18	
			Drawing No: 202-ASS-005	

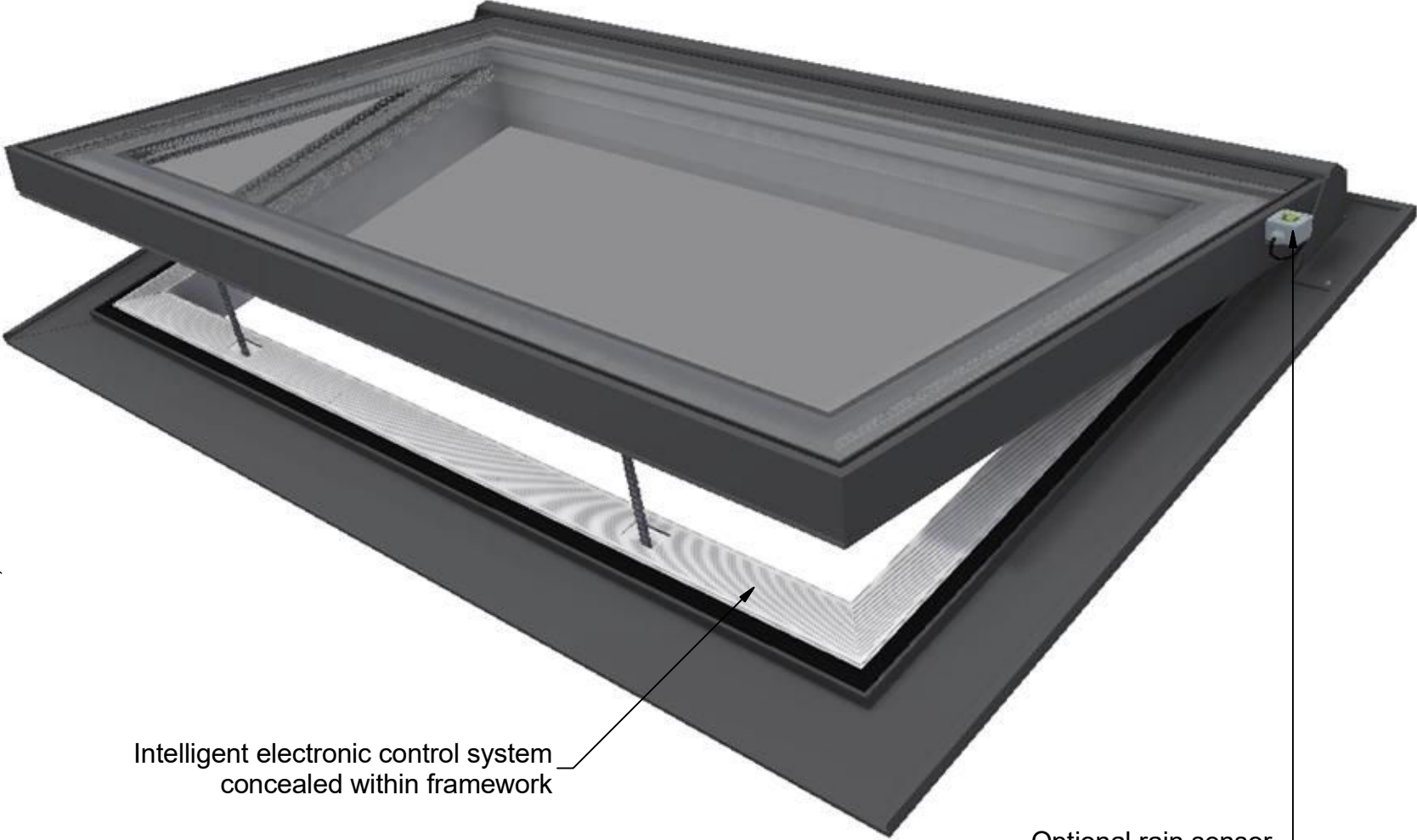
GV Standard PitchVent - Chain Actuated

Electronically-controlled hinged pitched roofwindow
Double glazed and triple glazed options available

Hinge should always
be at the top of the fall



Side Elevation
Open position



Intelligent electronic control system
concealed within framework

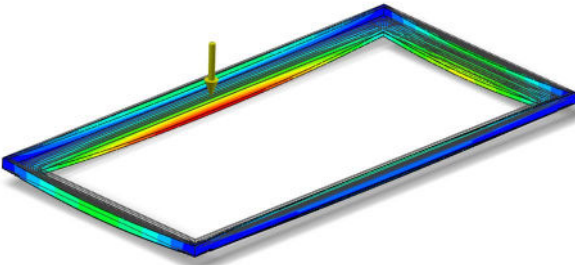
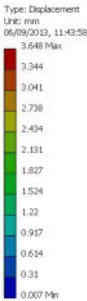
Optional rain sensor

Mechanism Detail

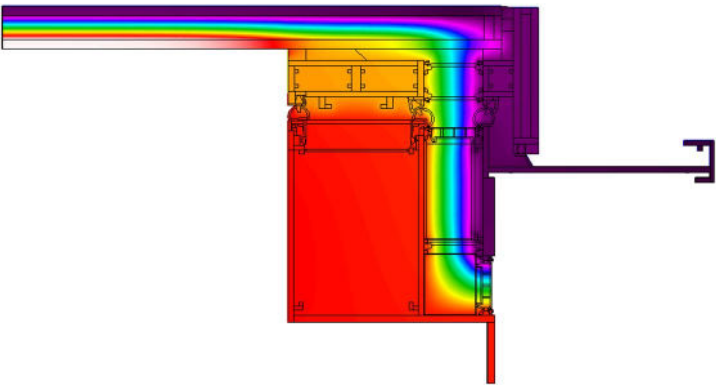


Concealed chain actuators - for
the two actuator variant, the
actuators are synchronised

FEA MODELLED FOR
STRUCTURAL INTEGRITY



THERMALLY-MODELLED FOR INDUSTRY
LEADING EFFICIENCY



FOR DIMENSIONING AND INSTALLATION
INFORMATION REFER TO DRAWINGS:

- 202-ASS-001
- 202-ASS-002
- 202-ASS-003
- 202-ASS-004
- 202-ASS-005



Saw Mills Road
Diss
Norfolk
IP22 4RG

Tel: +44 (0)333 8000 881
Fax: +44 (0)333 8000 882
Email: sales@glazingvision.co.uk
Website: www.glazingvision.co.uk

IT IS GLAZING VISION'S POLICY TO CONTINUOUSLY DEVELOP AND IMPROVE OUR PRODUCTS. WE THEREFORE RESERVE THE RIGHT TO MODIFY OR CHANGE THE DETAIL DESIGN AT OUR DISCRETION AND WITHOUT PRIOR NOTICE. THIS DRAWING IS COPYRIGHT AND THE SOLE PROPERTY OF GLAZING VISION LTD. THE DESIGNS/INFORMATION IT CONTAINS ARE PRIVATE AND CONFIDENTIAL. IT MUST NOT BE COPIED, EXHIBITED OR COMMUNICATED TO THIRD PARTIES FOR ANY PURPOSE OTHER THAN THAT FOR WHICH IT WAS ISSUED WITHOUT THE WRITTEN PERMISSION OF GLAZING VISION LTD.

Third angle projection unless otherwise noted.
Tolerances:
Whole numbers = $\pm 1\text{mm}$
One decimal place = $\pm 0.5\text{mm}$
Two decimal places = $\pm 0.2\text{mm}$
All angles 90 ± 0.5 degrees unless specified
IF IN DOUBT - ASK! DO NOT SCALE
Supplier to deburr & remove sharp corners

Rev	Revision Description	Drawn/ Date	Product: 202 - PitchVent	Checked By:
-	Initial Release	HL 02.02.18	Description: Chain Actuated PitchVent General Arrangement Details	JSL
			Materials: N/A	Check Date:
			Finish: N/A	02.02.18
			Weight: N/A	
			Quantity: N/A	
			Scale: N/A	
			Drawn By: HL	
			Drawn Date: 02.02.18	
			Drawing No: 202-ASS-006	

GV Standard PitchVent - Manual Crank

Manually opened hinged pitched roofwindow
Double glazed only

Hinge should always
be at the top of the fall

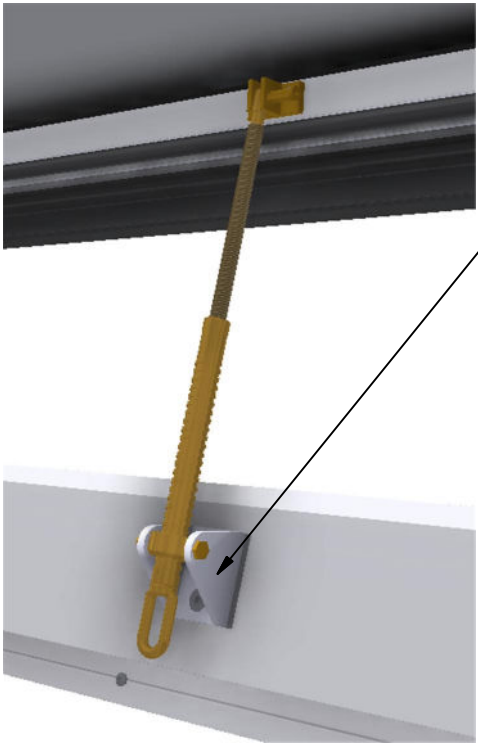
Side Elevation
Open position

MIN 15°
MAX 60°

Opening height
approx. 220mm

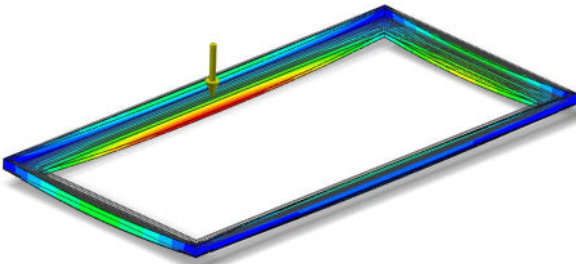
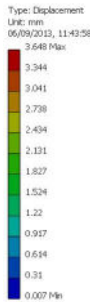


Mechanism Detail

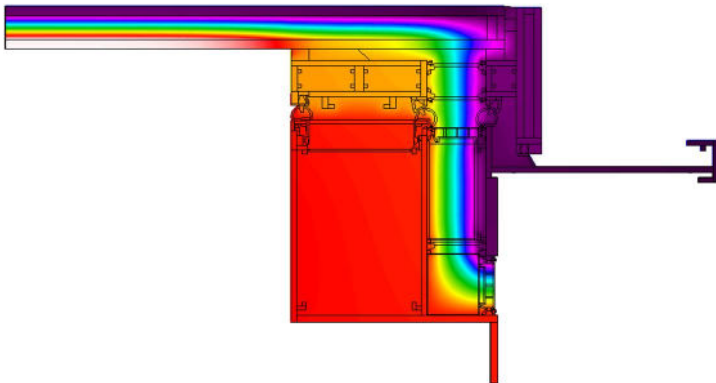


Site applied telescopic spindle
brass finish as standard. To avoid
mechanism clashing, internal finishes
must not protude beyond framework.

FEA MODELLED FOR
STRUCTURAL INTEGRITY



THERMALLY-MODELLED FOR INDUSTRY
LEADING EFFICIENCY



FOR DIMENSIONING AND INSTALLATION
INFORMATION REFER TO DRAWINGS:

- 202-ASS-001
- 202-ASS-002
- 202-ASS-003
- 202-ASS-004
- 202-ASS-005



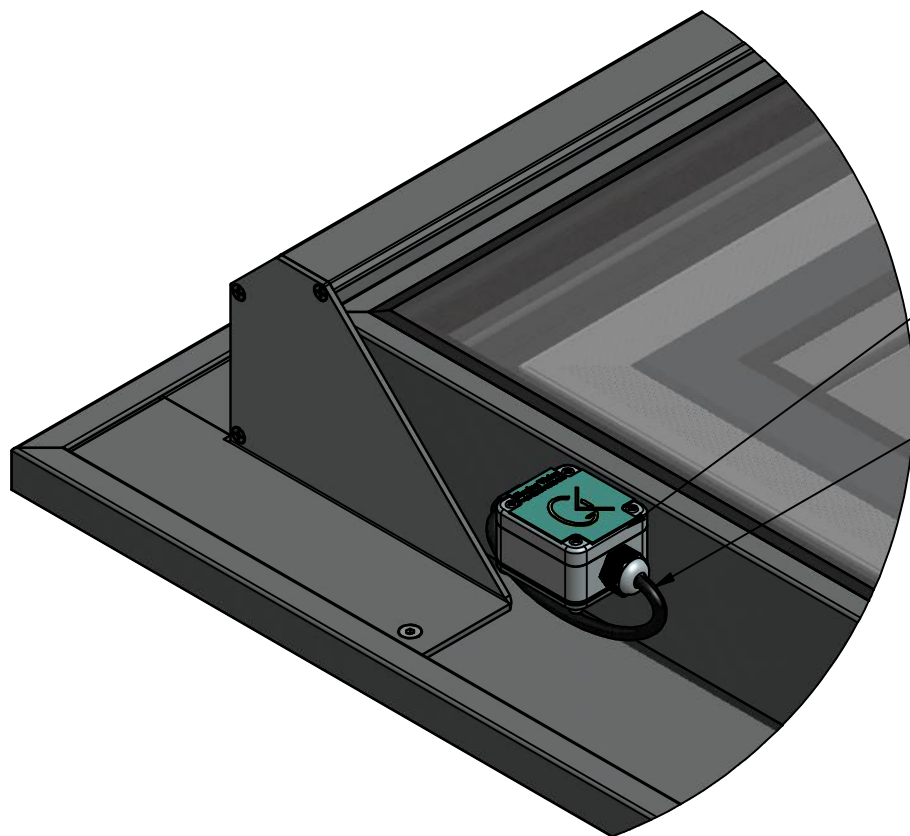
Saw Mills Road
Diss
Norfolk
IP22 4RG

Tel: +44 (0)333 8000 881
Fax: +44 (0)333 8000 882
Email: sales@glazingvision.co.uk
Website: www.glazingvision.co.uk

IT IS GLAZING VISION'S POLICY TO CONTINUOUSLY DEVELOP AND IMPROVE OUR PRODUCTS. WE THEREFORE RESERVE THE RIGHT TO MODIFY OR CHANGE THE DETAIL DESIGN AT OUR DISCRETION AND WITHOUT PRIOR NOTICE. THIS DRAWING IS COPYRIGHT AND THE SOLE PROPERTY OF GLAZING VISION LTD. THE DESIGNS/INFORMATION IT CONTAINS ARE PRIVATE AND CONFIDENTIAL. IT MUST NOT BE COPIED, EXHIBITED OR COMMUNICATED TO THIRD PARTIES FOR ANY PURPOSE OTHER THAN THAT FOR WHICH IT WAS ISSUED WITHOUT THE WRITTEN PERMISSION OF GLAZING VISION LTD.

Third angle projection unless otherwise noted.
Tolerances:
Whole numbers = ±1mm
One decimal place = ±0.5mm
Two decimal places = ±0.2mm
All angles 90±0.5 degrees unless specified
IF IN DOUBT - ASK! DO NOT SCALE
Supplier to deburr & remove sharp corners

Rev	Revision Description	Drawn/ Date	Product: 202 - PitchVent	Checked By:
-	Initial Release	HL 02.02.18	Description: Manual Crank PitchVent General Arrangement Details	JSL
			Materials: N/A	Check Date:
			Finish: N/A	202.02.18
			Weight: N/A	
			Quantity: N/A	
			Scale: N/A	
			Drawn By: HL	
			Drawn Date: 02.02.18	
			Drawing No: 202-ASS-007	

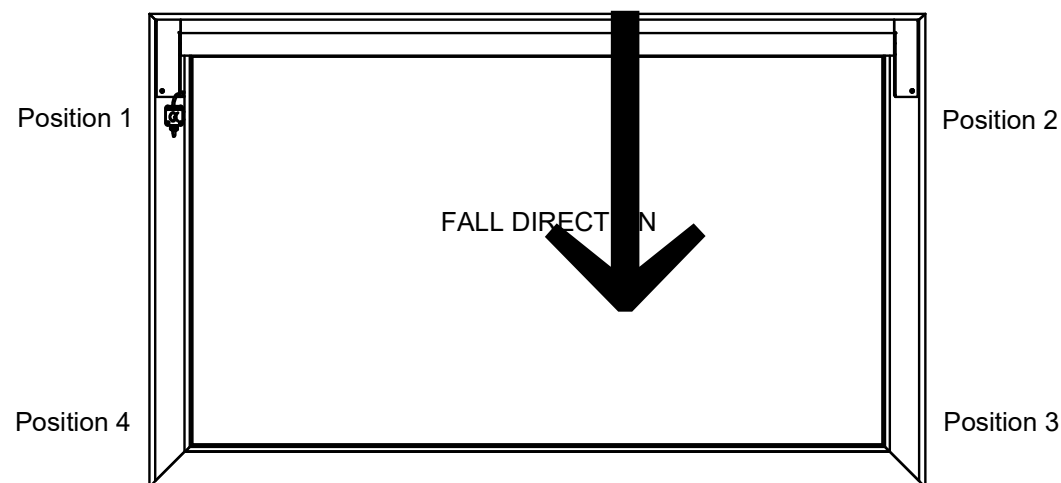


Mounting bracket polyester powder coated to match external product colour.

Cable enters product behind the mounting bracket into a weather tight cable gland.

Plan View of PitchVent

Position 1 shown



Note: When a rain sensor is required, the customer is to specify a mounting position at time of order to maximise exposure to the elements and avoid being in the rain shadow of the building.

There are four positions for the rain sensor, and it cannot be mounted remotely.

For rain sensors at position 3 and 4, there will be a black cable running towards the hinge along the underside of the lid.

NOTE: The rain sensor is an optional extra and must be specified if required.

**GLAZING
VISION**

Saw Mills Road
Diss
Norfolk
IP22 4RG

Tel: +44 (0)333 8000 881
Fax: +44 (0)333 8000 882
Email: sales@glazingvision.co.uk
Website: www.glazingvision.co.uk

IT IS GLAZING VISION'S POLICY TO CONTINUOUSLY DEVELOP AND IMPROVE OUR PRODUCTS. WE THEREFORE RESERVE THE RIGHT TO MODIFY OR CHANGE THE DETAIL DESIGN AT OUR DISCRETION AND WITHOUT PRIOR NOTICE. THIS DRAWING IS COPYRIGHT AND THE SOLE PROPERTY OF GLAZING VISION LTD. THE DESIGNS/INFORMATION IT CONTAINS ARE PRIVATE AND CONFIDENTIAL. IT MUST NOT BE COPIED, EXHIBITED OR COMMUNICATED TO THIRD PARTIES FOR ANY PURPOSE OTHER THAN THAT FOR WHICH IT WAS ISSUED WITHOUT THE WRITTEN PERMISSION OF GLAZING VISION LTD.

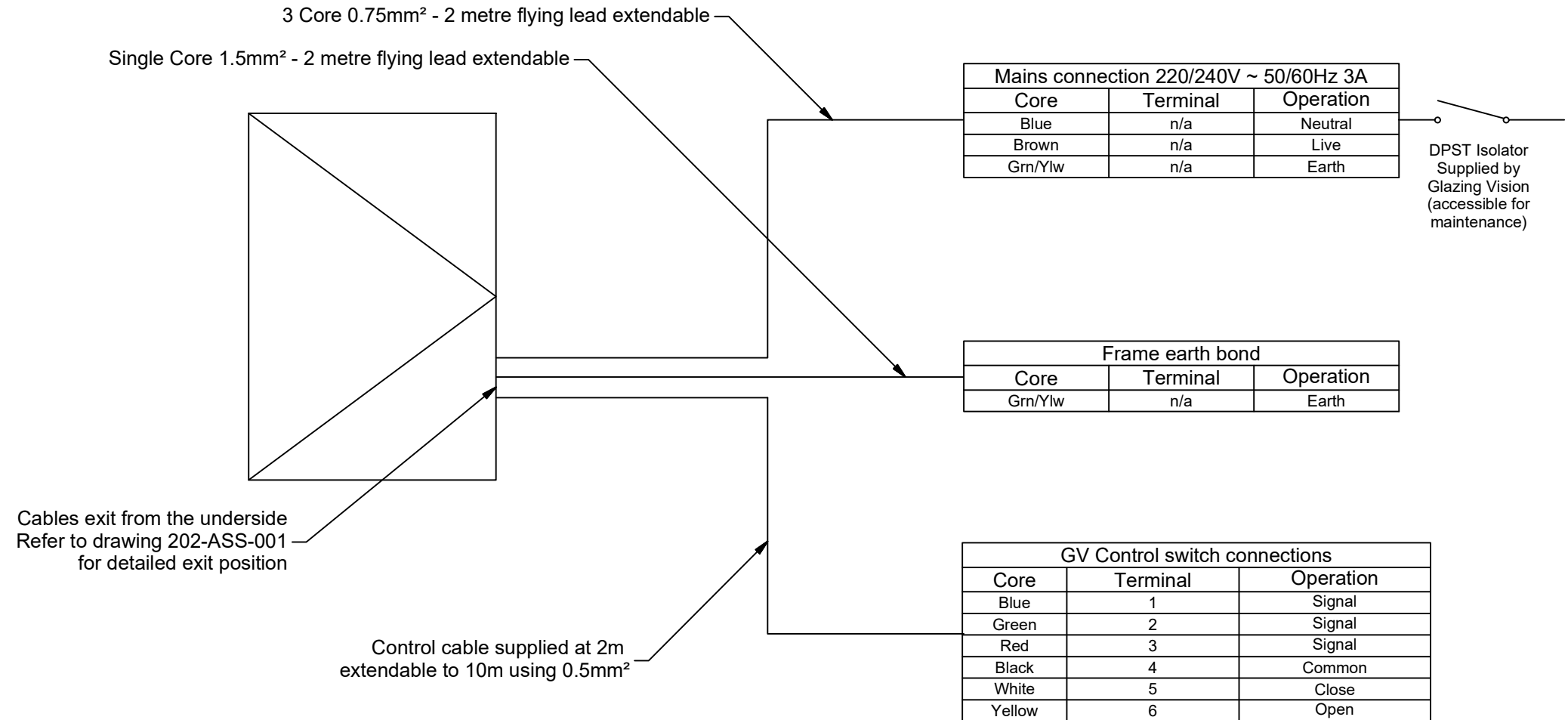
Third angle projection unless otherwise noted.
Tolerances:
Whole numbers = $\pm 1\text{mm}$
One decimal place = $\pm 0.5\text{mm}$
Two decimal places = $\pm 0.2\text{mm}$
All angles 90 ± 0.5 degrees unless specified
IF IN DOUBT - ASK! DO NOT SCALE
Supplier to deburr & remove sharp corners

Rev	Revision Description	Drawn/ Date	Product: 202 - PitchVent		Checked By:
-	Initial Release	HL 02.02.18	Description: PitchVent Rain Sensor Positioning		JSL
			Materials: N/A		Check Date: 13.04.18
A	Change in wording about remote mounting	HL 13.04.18	Finish: N/A	Drawn By: HL	
			Weight: N/A	Drawn Date: 02.02.18	
			Quantity: N/A	Drawing No: 202-ASS-008	
			Scale: N/A		

This is a fixed installation all connections should be carried out by a competent person.

A4

A mains supply must be available on site when the unit is installed otherwise it may not be possible to fully commission the rooflight.



**GLAZING
VISION**

Saw Mills Road
Diss
Norfolk
IP22 4RG

Tel: +44 (0)333 8000 881
Fax: +44 (0)333 8000 882
Email: sales@glazingvision.co.uk
Website: www.glazingvision.co.uk

IT IS GLAZING VISION'S POLICY TO CONTINUOUSLY DEVELOP AND IMPROVE OUR PRODUCTS. WE THEREFORE RESERVE THE RIGHT TO MODIFY OR CHANGE THE DETAIL DESIGN AT OUR DISCRETION AND WITHOUT PRIOR NOTICE. THIS DRAWING IS COPYRIGHT AND THE SOLE PROPERTY OF GLAZING VISION LTD. THE DESIGNS/INFORMATION IT CONTAINS ARE PRIVATE AND CONFIDENTIAL. IT MUST NOT BE COPIED, EXHIBITED OR COMMUNICATED TO THIRD PARTIES FOR ANY PURPOSE OTHER THAN THAT FOR WHICH IT WAS ISSUED WITHOUT THE WRITTEN PERMISSION OF GLAZING VISION LTD.

Third angle projection unless otherwise noted.
Tolerances:
Whole numbers = ±1mm
One decimal place = ±0.5mm
Two decimal places = ±0.2mm
All angles 90±0.5 degrees unless specified
IF IN DOUBT - ASK! DO NOT SCALE
Supplier to deburr & remove sharp corners

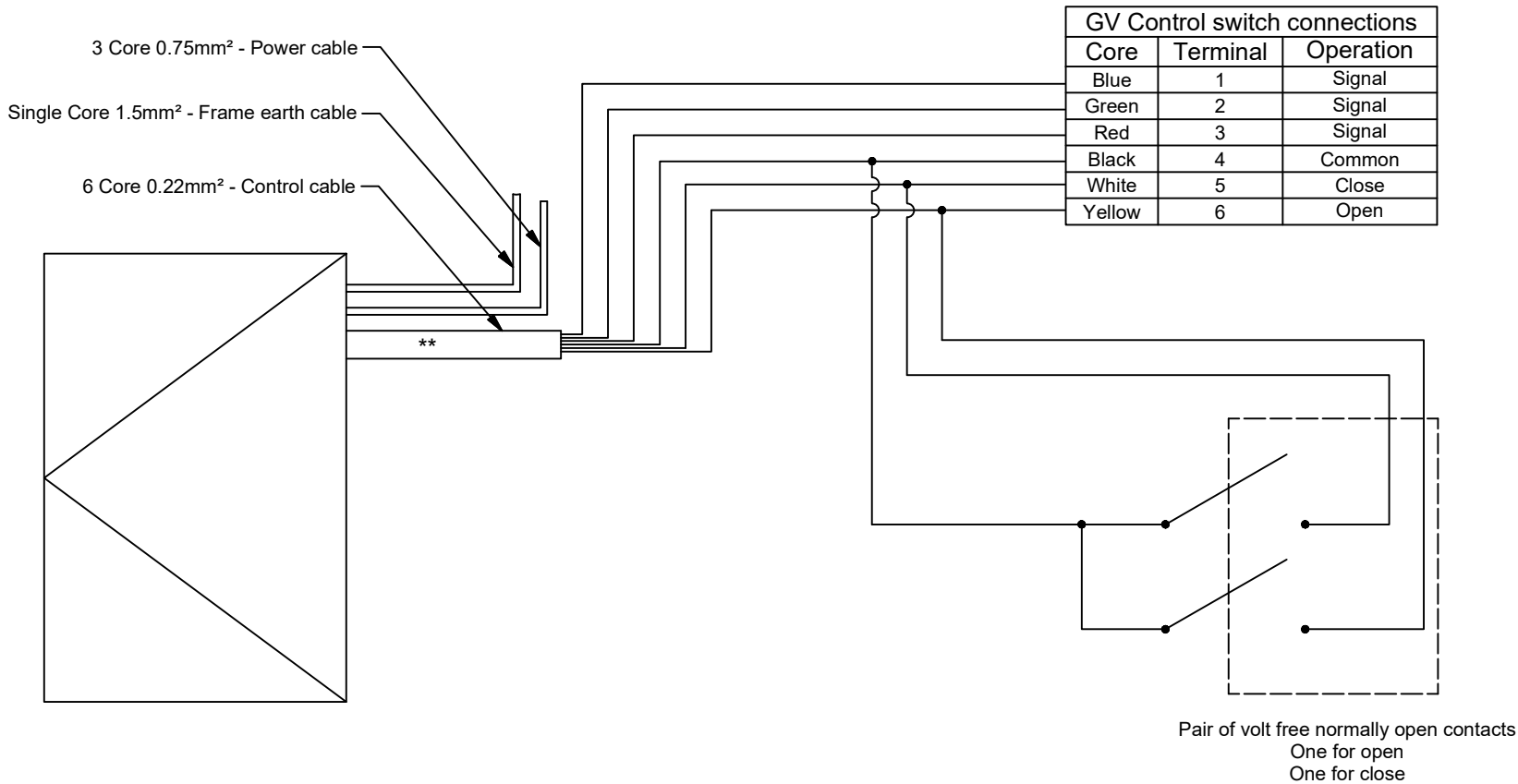
Rev	Revision Description	Drawn/Date
-	Initial Release	HL 14.02.18

Product: 202 - PitchVent		Checked By: MM
Description: Client Wiring Diagram		
Materials: N/A		Check Date: 14.02.18
Finish: N/A	Drawn By: HL	
Weight:	Drawn Date: 14.02.18	
Quantity: N/A	Drawing No: 202-ASS-009	
Scale: N/A		

This is a fixed installation all connections should be carried out by a competent person.

The control switch must be installed for maintenance reasons.

All cables supplied at 2m, extendable to 10m with appropriate cable.



GLASS CONFORMS TO IMPACT RESISTANCE AND BREAKAGE CHARACTERISTICS OF BS EN 12600:2002. IGUs FABRICATED TO BS EN 1279 AND SUPPLIED IN ACCORDANCE WITH BS 5516-2:2004.

FINISH SPECIFICATION:

POLYESTER POWDER COATED: MIN 40 MICRONS

STANDARD EXTERNAL COLOUR: **N/A**

STANDARD INTERNAL COLOUR: **N/A**

FIXING SPECIFICATION: A2 STAINLESS STEEL

SEALANTS SPECIFICATION: NEUTRAL CURE TO BS5889

ALL DIMENSIONS mm UNLESS OTHERWISE STATED.

**GLAZING
VISION**

Sawmills Road
Diss
Norfolk
IP22 4RG

Tel: +44 (0)1379 658300
Email: sales@glazingvision.co.uk
Website: www.glazingvision.co.uk

IT IS GLAZING VISION'S POLICY TO CONTINUOUSLY DEVELOP AND IMPROVE OUR PRODUCTS. WE THEREFORE RESERVE THE RIGHT TO MODIFY OR CHANGE THE DETAIL DESIGN AT OUR DISCRETION AND WITHOUT PRIOR NOTICE.

THIS DRAWING IS COPYRIGHT AND THE SOLE PROPERTY OF GLAZING VISION LTD. THE DESIGNS / INFORMATION IT CONTAINS ARE PRIVATE AND CONFIDENTIAL. IT MUST NOT BE COPIED, EXHIBITED OR COMMUNICATED TO THIRD PARTIES FOR ANY PURPOSE OTHER THAN THAT FOR WHICH IT WAS ISSUED WITHOUT THE WRITTEN PERMISSION OF GLAZING VISION LTD.

REV.	REVISION DESCRIPTION	NAME/DATE
-	Initial release	JSL 22/3/19

CHECKED MG 22/3/19 SCALE NTS

PRODUCT 202 - GV Standard Pitchvent

DESCRIPTION
Secondary control switch or BMS wiring diagram

DRAWING NUMBER 202-ASS-010 SHEET 1 of 1

One touch / Press and hold

Caution: Using latched contacts may render the rooflight inoperable. To initiate a control cycle e.g. to open, close or stop the rooflight, switch the contact briefly (approx. 500ms) to create one touch command.

Please call Glazing Vision if you need assistance.

All optional items must be specified at time of order