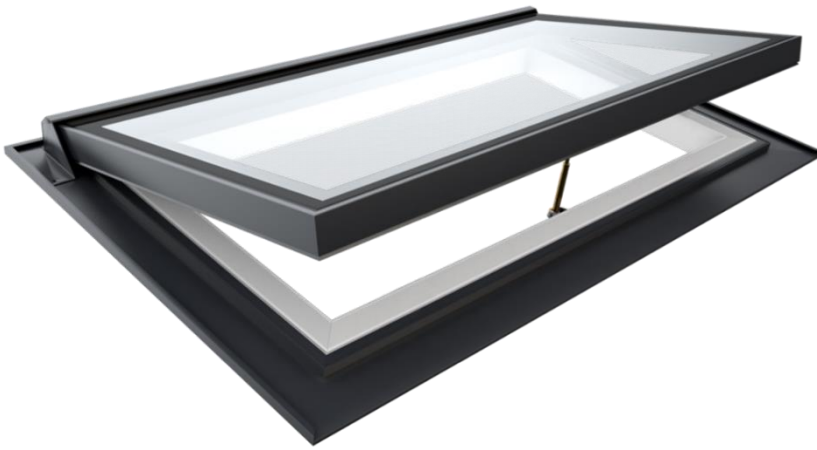


# GLAZING VISION

## Manual Pitchvent Roof Window

202-TDS-UK-001 – v1.4 – 14 Jan 2021



**Name:** Manual Pitchvent  
**Type:** Manually operated hinged in-plane roof window

**Description:**

The Manual Pitchvent is a thermally efficient roof window designed to provide ventilation. The product can be manually opened to a maximum height of approximately 220 mm through the use of a brass screw jack. Each unit is supplied with a crank handle. As standard this is 1.5 m long (suitable for installations where the product is at a reach of up to 3 m above floor level). Supplied in either portrait or landscape formats, it is designed to be installed in-plane on pitched roof applications.

A variety of optional extras such as special colour and easy clean coating are available.

This product is robust and long-lasting, boasting excellent thermal performance, air tightness and reliable operation.

**Intended Use:** Hinged roof window to provide natural daylight, day-to-day ventilation and weather resistance. It is not suitable for use as access.

<b>Internal Finished Opening Dimensions:</b>	Min Span:	800 mm	Max Span:	1500 mm
	Min Width:	250 mm	Max Width:	1500 mm
	Min Area:	0.20 m <sup>2</sup>	Max Area:	1.50 m <sup>2</sup>
	Min Roof Pitch:	15°	Max Roof Pitch:	60°

Note that the minimum and maximum span, width and pitch are dependent on various factors, your technical sales advisor will be happy to advise on these. Further information on roof preparation and product dimensions can be found on our website or by contacting your technical sales advisor.

**Glazing:** A wide variety of glazing specifications are available for this product. Your technical sales advisor will be happy to answer any questions regarding specific glass specifications or glazing performance requirements. Otherwise, quotes include suitable and cost effective glazing proposals.

**Standard Colours:** Qualicoat approved RAL 7015 slate grey outer, RAL 9010 pure white inner.

**Manual Operation:** The product is opened and closed by a centrally mounted brass screw jack, which is operated by the user below with a long crank handle.

**Performance and Weathertightness:** The product comprises thermally broken aluminium sections consisting of polyamide thermal breaks and closed cell PIR insulation thermally isolating the inner and outer frame sections. Structural integrity is assured through the use of finite element analysis (FEA) and testing.

U-values are calculated for each product and will be supplied in our quote. Further information and specific performance details can be obtained from your technical sales advisor.

The product is sealed to the roof using butyl and silicone and fixed in place with structural fixings which are concealed with internal finishes leaving a sleek external finish. Sealing between the base frame and the lid frame is achieved using a combination of silicone bubble and blade seals.

The product has been thoroughly tested and is UKCA and CE marked in accordance with EN 14351-1:2006+A2:2016. It has achieved the following classification results:

Size: 1000 mm span x 1500 mm width Pitch: 45°

Test	Standard	Classification/Declared Value
Air permeability	EN 12207	Class 4 ±600 Pa
Watertightness	EN 12208	Class 9A 600 Pa
Wind resistance	EN 12210	Class 4C ±1600 Pa Serviceability ±2400 Pa Safety

Visit our website or contact your technical sales advisor for certification documentation.

#### Security:

This product is designed with security as a priority. The mechanisms cannot be back driven and cannot be tampered with from the outside.

#### Optional Extras:

The following optional extras are available for this standard product at additional cost:

<b>Easy Clean Coating:</b>	A coating applied to the external face of the glass that facilitates water run-off. Helps the glass stay cleaner for longer and makes cleaning easier.
<b>Special Colour(s):</b>	This product has separate inner and outer colours as standard. Each can be swapped for a special colour.
<b>Telescopic Crank Handle:</b>	An extra long telescopic (1.75 m – 3 m long) crank handle supplied in place of the standard crank handle. This is suitable for installations where the product is at a reach of up to 4.5 m above floor level.
<b>Flashing Kit:</b>	A kit containing all materials required to flash/weather the product into the surrounding roofing.

[A suite of sales drawings is available.](#)

[Bespoke options may be available upon request but may incur additional design fees – contact your technical sales advisor for more information.](#)

---

**GLAZINGVISION**



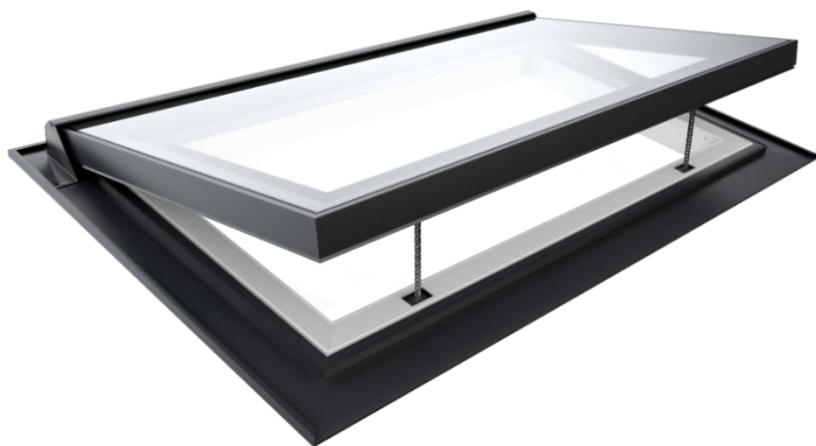
[www.glazingvision.co.uk](http://www.glazingvision.co.uk)



+44 (0)1379 658300



[technicalsales@glazingvision.co.uk](mailto:technicalsales@glazingvision.co.uk)



**Name:** Chain Pitchvent

**Type:** Chain actuated hinged in-plane roof window

**Description:**

The Chain Pitchvent is a thermally efficient roof window designed to provide ventilation. The product can be opened to a maximum height of approximately 280 mm using one/two chain actuators (depending on size). Supplied in either portrait or landscape formats, it is designed to be installed in-plane on pitched roof applications.

A variety of optional extras including a rain sensor, thermostat, remote control, and Building Management System connectivity are available.

This product is robust and long-lasting, boasting excellent thermal performance, air tightness and reliable operation.

**Intended Use:** Hinged roofwindow to provide natural daylight, day-to-day ventilation and weather resistance. It is not suitable for use as access.

<b>Internal Finished Opening Dimensions:</b>	Min Span:	800 mm	Max Span:	3000 mm
	Min Width:	800 mm	Max Width:	3000 mm
	Min Area:	0.64 m <sup>2</sup>	Max Area:	3.00 m <sup>2</sup>
	Min Roof Pitch:	15°	Max Roof Pitch:	60°

Note that the minimum and maximum span, width and pitch are dependent on various factors, your technical sales advisor will be happy to advise on these. Further information on roof preparation and product dimensions can be found on our website or by contacting your technical sales advisor.

**Glazing:** A wide variety of glazing specifications are available for this product. Your technical sales advisor will be happy to answer any questions regarding specific glass specifications or glazing performance requirements. Otherwise, quotes include suitable and cost effective glazing proposals.

**Standard Colours:** Qualicoat approved RAL 7015 slate grey outer, RAL 9010 pure white inner.

**Control, Power and Drive:** The product is operated using a supplied wall mounted switch connected to a control box mounted inside the product framework via a flying lead.

Also supplied is an externally housed Power Supply Unit requiring connection to an electrical mains supply. It is recommended that the PSU is housed somewhere accessible.

The unit is driven by one/two chain actuator mechanisms that are mounted along the opening edge of the product and, in the event of power failure, can be manually overridden.

## Performance and Weathertightness:

The product comprises thermally broken aluminium sections consisting of polyamide thermal breaks and closed cell PIR insulation thermally isolating the inner and outer frame sections. Structural integrity is assured through the use of finite element analysis (FEA) and testing. U-values are calculated for each product and will be supplied in our quote. Further information and specific performance details can be obtained from your technical sales advisor.

The product is sealed to the roof using butyl and silicone and fixed in place with structural fixings which are concealed with internal finishes leaving a sleek external finish.

Sealing between the base frame and the lid frame is achieved using a combination of silicone bubble and blade seals.

The product has been thoroughly tested and is UKCA and CE marked in accordance with EN 14351-1:2006+A2:2016. It has achieved the following classification results:

Size: 1000 mm span x 3000 mm width Pitch: 45°

Test	Standard	Classification/Declared Value	
Air permeability	EN 12207	Class 4	±600 Pa
Watertightness	EN 12208	Class 9A	600 Pa
Wind resistance	EN 12210	Class 4C	±1600 Pa Serviceability ±2400 Pa Safety

Visit our website or contact your technical sales advisor for certification documentation.

## Security:

This product is designed with security as a priority. The mechanisms cannot be back driven and cannot be tampered with from the outside.

## Optional Extras:

The following optional extras are available for this standard product at additional cost:

<b>Easy Clean Coating:</b>	A coating applied to the external face of the glass that facilitates water run-off. Helps the glass stay cleaner for longer and makes cleaning easier.
<b>Special Colour(s):</b>	This product has separate inner and outer colours as standard. Each can be swapped for a special colour.
<b>Remote Control:</b>	Allows the product to be opened and closed from a short range.
<b>Rain Sensor:</b>	Automatically closes the product when moisture is detected.
<b>Thermostat:</b>	Automatically operates the product to regulate the temperature within the building.
<b>Battery Backup:</b>	Allows full operation of the product for a limited period in the event of a power failure.
<b>BMS Connectivity:</b>	Allows the product to be operated by contact closure of a third-party Building Management System.
<b>Flashing Kit:</b>	A kit containing all materials required to flash/weather the product into the surrounding roofing.

A suite of sales drawings is available.

Bespoke options may be available upon request but may incur additional design fees – contact your technical sales advisor for more information.

---

**GLAZINGVISION**



[www.glazingvision.co.uk](http://www.glazingvision.co.uk)



+44 (0)1379 658300



[technicalsales@glazingvision.co.uk](mailto:technicalsales@glazingvision.co.uk)