

# GV Standard PitchVent - Chain Actuated

Electronically-controlled hinged pitched roofwindow  
Double glazed and triple glazed options available

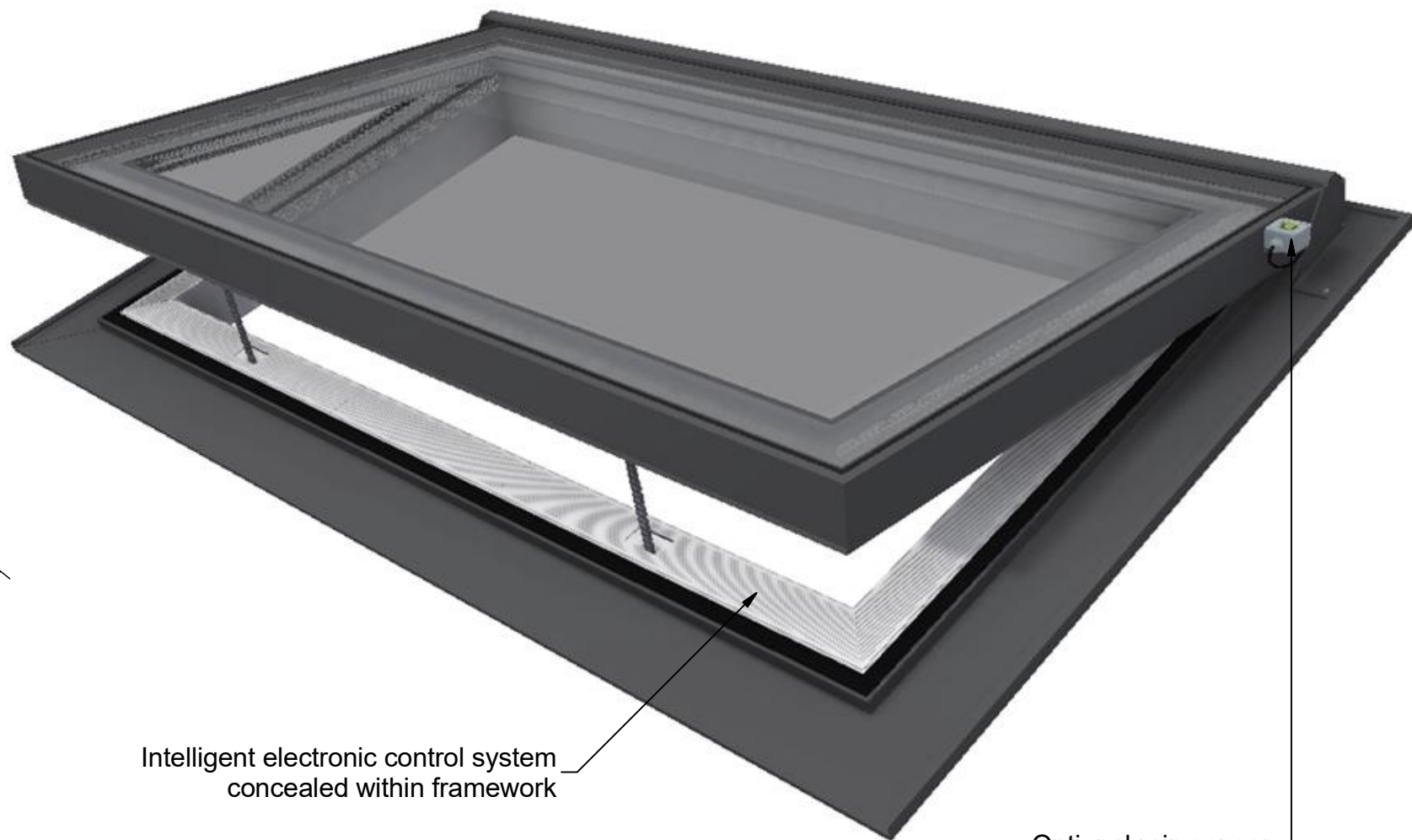
Please note that this drawing depicts the two actuator variant. The one actuator variant will have a single actuator in the centre. The number of chain actuators required depends on glass specification and roof pitch. This will be determined during the order process.

Hinge should always be at the top of the fall

Side Elevation  
Open position

Min 15°  
Max 60°

Opening height  
approx. 280mm



Intelligent electronic control system  
concealed within framework

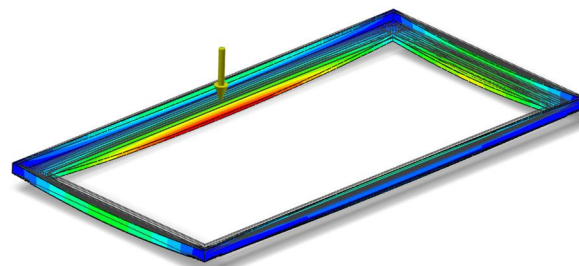
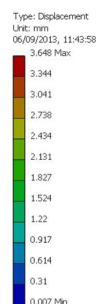
Optional rain sensor

Mechanism Detail

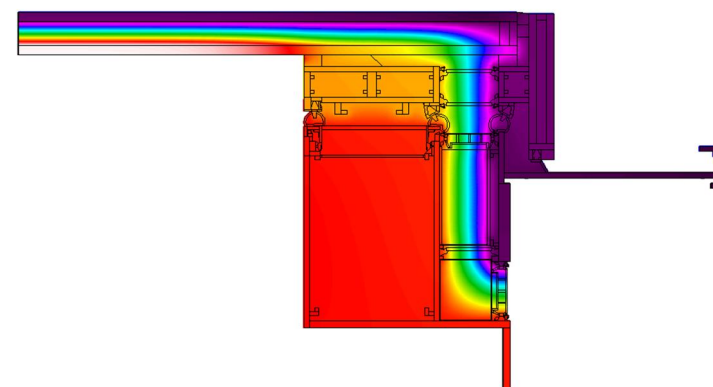


Concealed chain actuators - for the two actuator variant, the actuators are synchronised

FEA MODELLED FOR  
STRUCTURAL INTEGRITY



THERMALLY-MODELLED FOR INDUSTRY  
LEADING EFFICIENCY



FOR DIMENSIONING AND INSTALLATION  
INFORMATION REFER TO DRAWINGS:

- 202-ASS-001
- 202-ASS-002
- 202-ASS-003
- 202-ASS-004
- 202-ASS-005



Saw Mills Road  
Diss  
Norfolk  
IP22 4RG  
Tel: +44 (0)333 8000 881  
Fax: +44 (0)333 8000 882  
Email: sales@glazingvision.co.uk  
Website: www.glazingvision.co.uk

IT IS GLAZING VISION'S POLICY TO CONTINUOUSLY DEVELOP AND IMPROVE OUR PRODUCTS. WE THEREFORE RESERVE THE RIGHT TO MODIFY OR CHANGE THE DETAIL DESIGN AT OUR DISCRETION AND WITHOUT PRIOR NOTICE. THIS DRAWING IS COPYRIGHT AND THE SOLE PROPERTY OF GLAZING VISION LTD. THE DESIGNS/INFORMATION IT CONTAINS ARE PRIVATE AND CONFIDENTIAL. IT MUST NOT BE COPIED, EXHIBITED OR COMMUNICATED TO THIRD PARTIES FOR ANY PURPOSE OTHER THAN THAT FOR WHICH IT WAS ISSUED WITHOUT THE WRITTEN PERMISSION OF GLAZING VISION LTD.

Third angle projection unless otherwise noted.  
Tolerances:  
Whole numbers = ±1mm  
One decimal place = ±0.5mm  
Two decimal places = ±0.2mm  
All angles 90±0.5 degrees unless specified  
**IF IN DOUBT - ASK! DO NOT SCALE**  
Supplier to deburr & remove sharp corners

Rev	Revision Description	Drawn/Date
-	Initial Release	HL 02.02.18

Product: 202 - PitchVent		Checked By: JSL
Description: Chain Actuated PitchVent General Arrangement Details		
Materials: N/A	Drawn By: HL	Check Date: 02.02.18
Finish: N/A	Drawn Date: 02.02.18	
Weight: N/A	Drawing No: 202-ASS-006	
Quantity: N/A		
Scale: N/A		