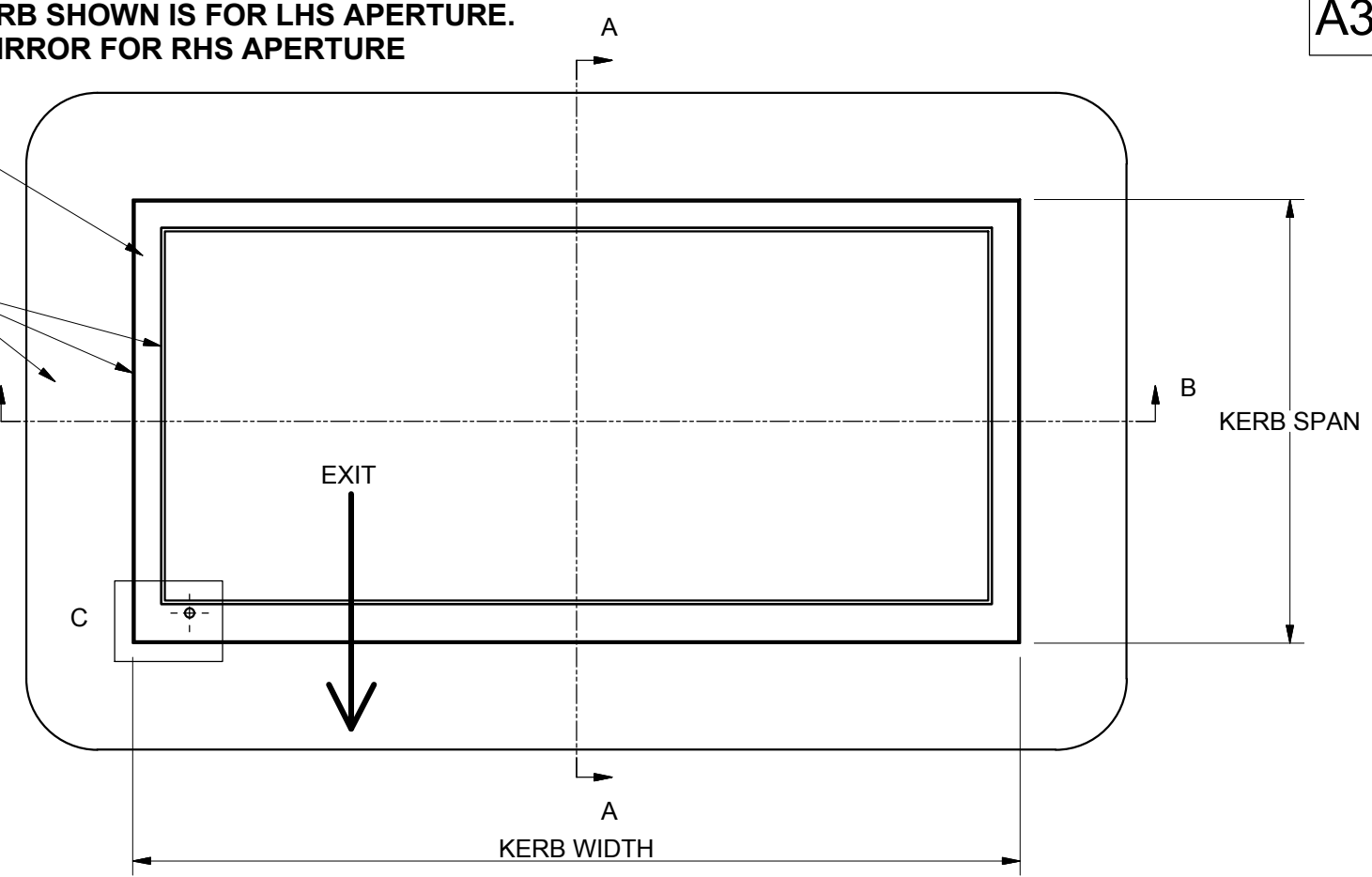


NOTE: KERB SHOWN IS FOR LHS APERTURE.
MIRROR FOR RHS APERTURE



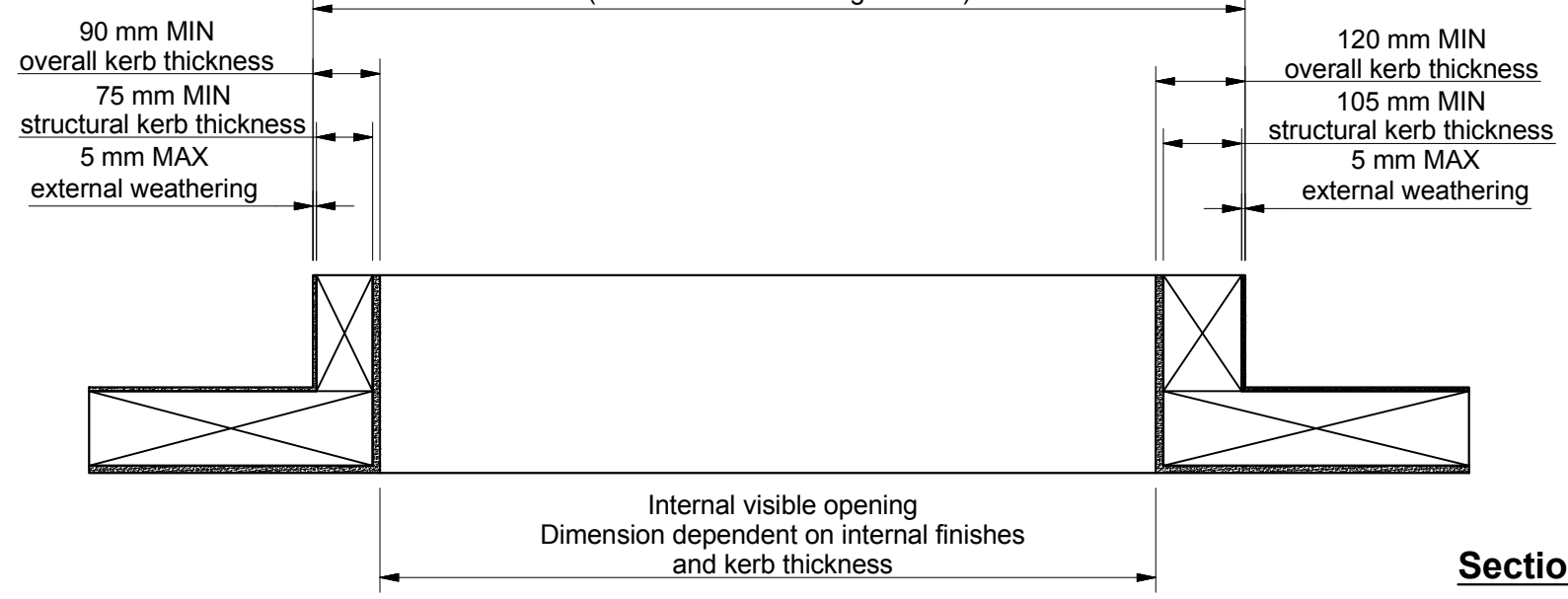
Flat top sealing surface. No steps or undulations exceeding ±2mm. Weathering should not be continued across the top of the kerb

Fully weathered structural kerb and internal finishes (by others)

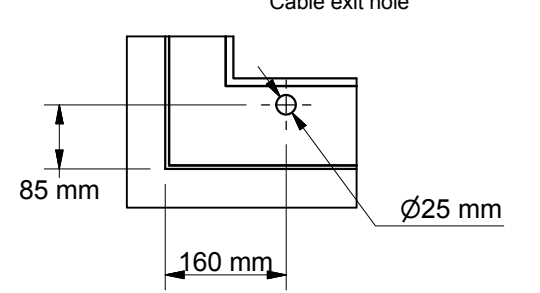


Section A-A (Scale 1 : 10)

KERB SPAN
Critical dimension - Customer to specify
(Includes all weathering finishes)

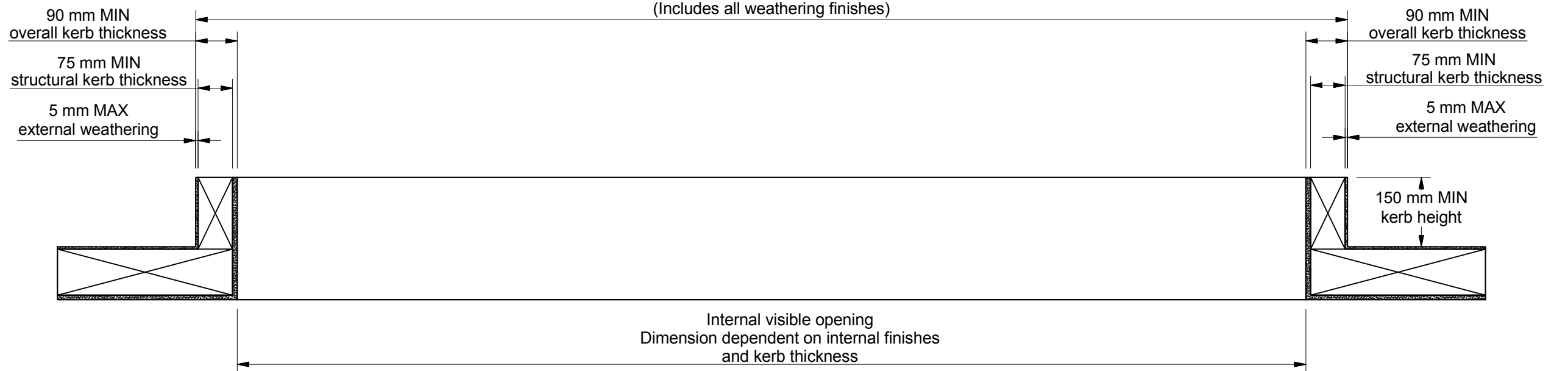


Detail C (Scale 1 : 10)



Section B-B (Scale 1 : 10)

KERB WIDTH
Critical dimension - Customer to specify
(Includes all weathering finishes)



Rev	Revision Description	Drawn/Date
B	Note for cable exit hole location	SW 30.06.17
A	Minimum kerb thickness increased	GH 16.03.16

Product: 607 - GV Standard Free Standing Box		Checked By: JSL
Description: Kerb detail		
Materials: N/A	Drawn By: JWJ	Check Date: 30.06.17
Finish: N/A	Drawn Date: 16.07.15	
Weight: N/A	Quantity: N/A	
Scale: 1:20 1:10		Drawing No: 607-ASS-002