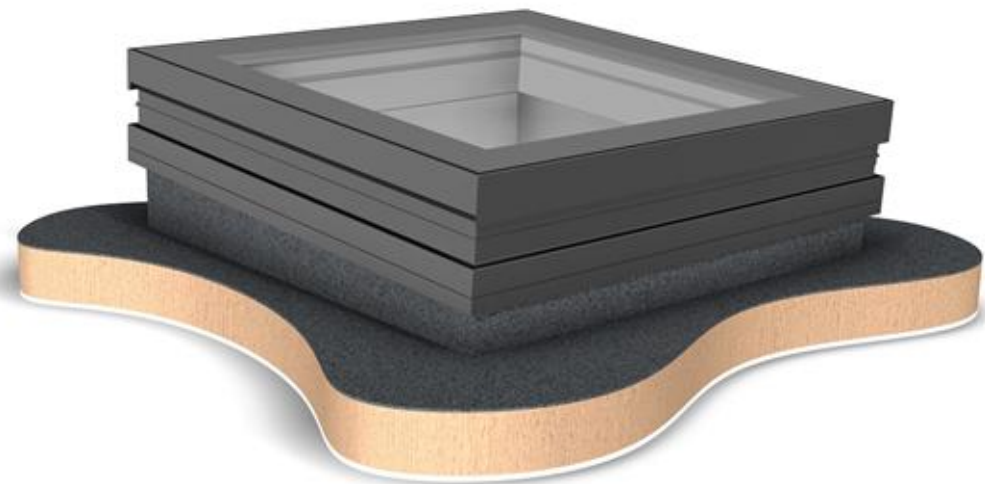
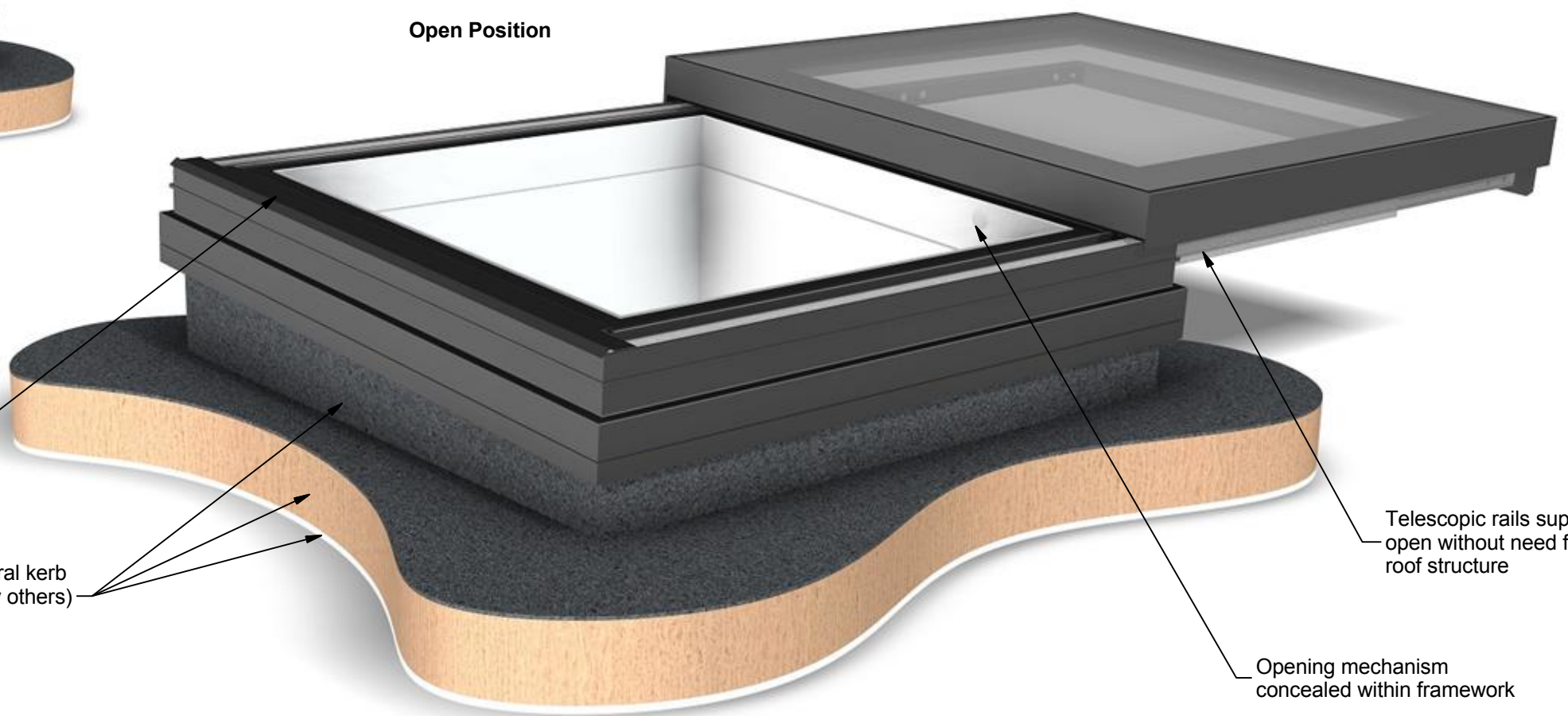


GV STANDARD FLAT SKYGLIDE
ELECTRONICALLY OPERATED SLIDING ROOFLIGHT

Closed Position



Open Position



Intelligent electronic control system concealed within framework

Fully weathered structural kerb and internal finishes (by others)

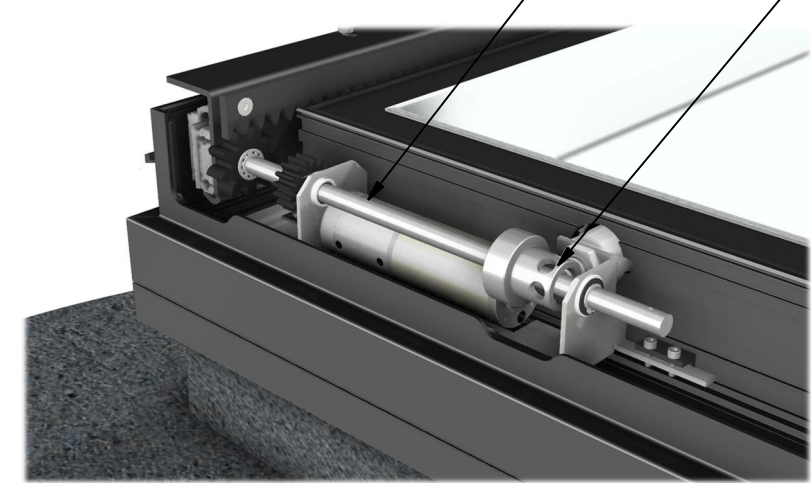
Telescopic rails support lid when open without need for additional roof structure

Opening mechanism concealed within framework

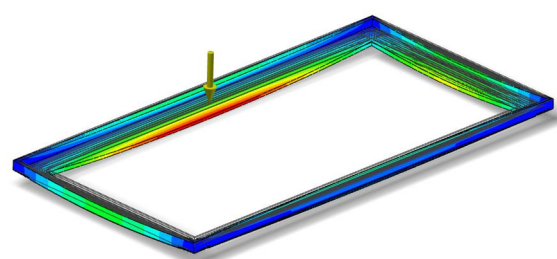
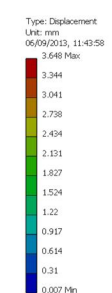
Motor mechanism comprising planetary gearbox motor concealed within framework providing optimum performance.

One way clutch and solenoid security feature (patent applied for) as standard, allows unit to be closed without power whilst maintaining security. Hidden internal override allows unit to be opened without power.

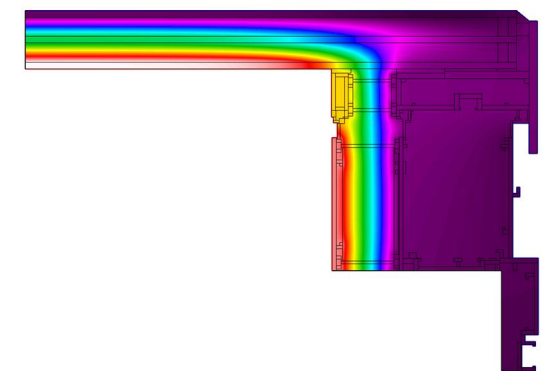
Internal Drive Detail



FEA MODELLED FOR STRUCTURAL INTEGRITY



THERMALLY MODELLED FOR INDUSTRY LEADING EFFICIENCY



REQUIRES WEATHERED KERB (NOT SUPPLIED)
REFER TO DRAWINGS:
601-ASS-402
601-ASS-403
601-ASS-404
601-ASS-405
601-ASS-406
601-ASS-407
601-ASS-408
601-ASS-409
601-ASS-410
FOR DETAILS

Rev	Revision Description	Drawn/Date
-	Initial release	JWL 13.02.14

Product: 601 - GV Standard Flat Skyglide		Checked By: PGW
Description: Product overview		
Materials: N/A	Drawn By: JWL	Check Date: 13.02.14
Finish: N/A	Drawn Date: 13.02.14	
Weight: N/A	Quantity: N/A	Drawing No: 601-ASS-401
Scale: NTS		