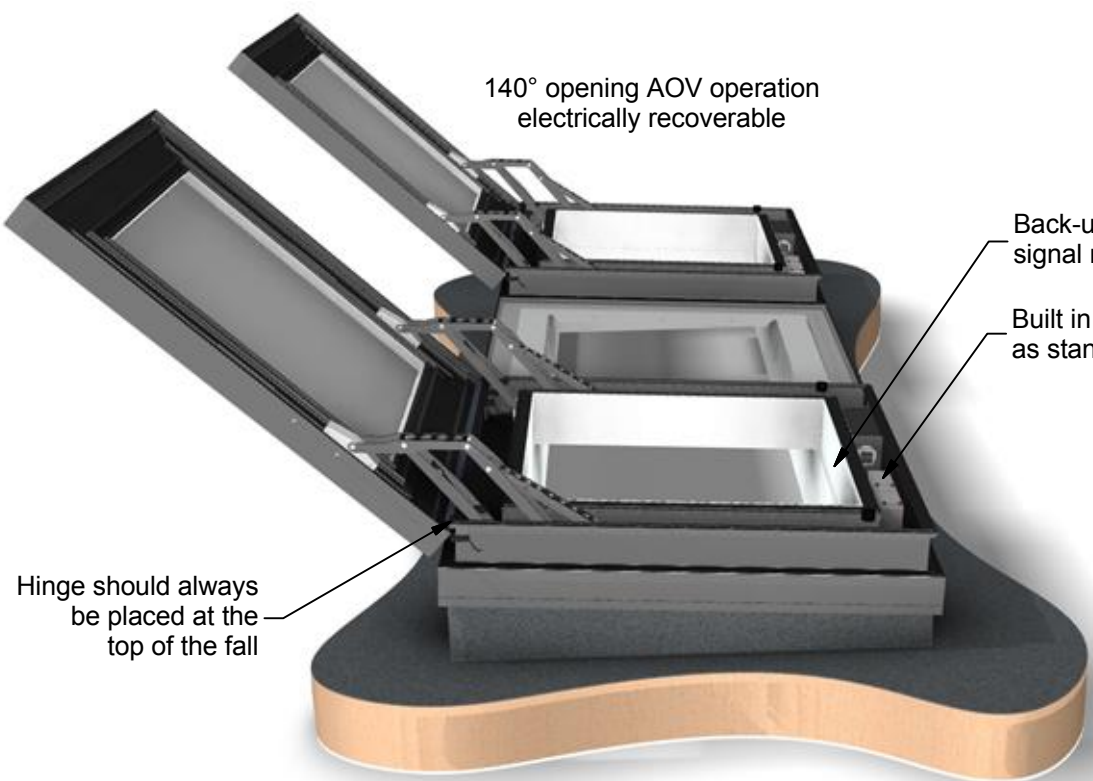


GV STANDARD INTEGRATED X-VENT
ELECTRONICALLY OPERATED AOV HINGED ROOFLIGHTS
INTEGRATED WITH A FLUSHGLAZE

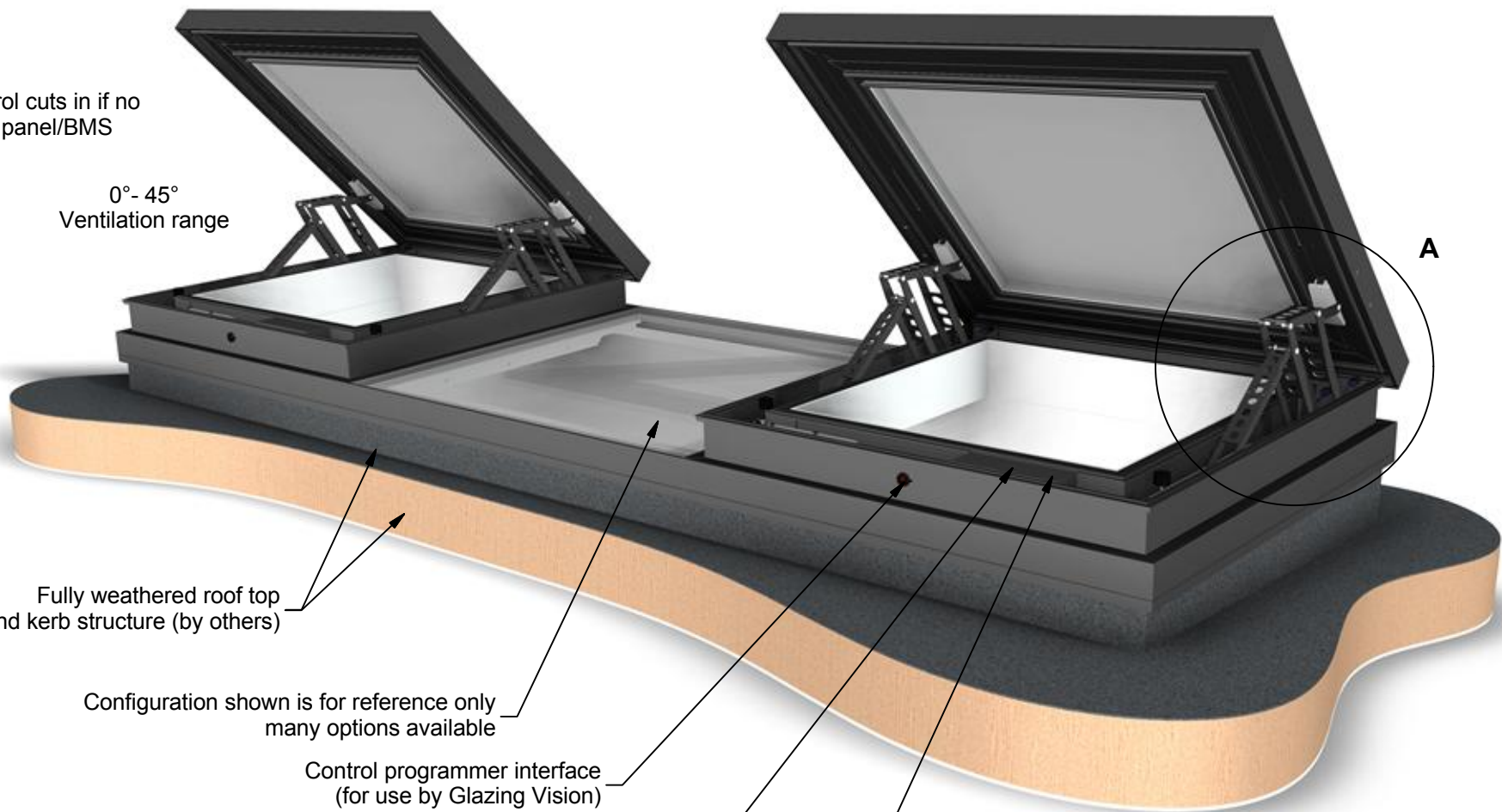


140° opening AOV operation
electrically recoverable

Back-up thermistor control cuts in if no
signal received from fire panel/BMS

Built in battery backup
as standard

Hinge should always
be placed at the
top of the fall



0° - 45°
Ventilation range

Fully weathered roof top
and kerb structure (by others)

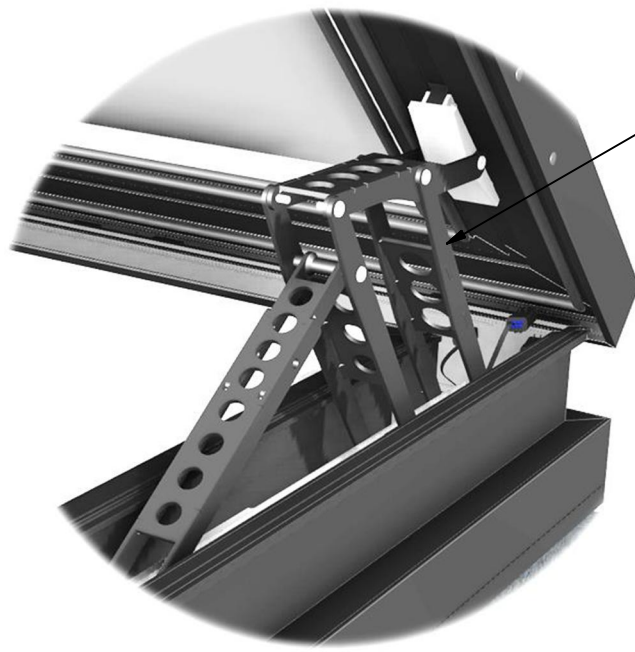
Configuration shown is for reference only
many options available

Control programmer interface
(for use by Glazing Vision)

Intelligent electronic control system

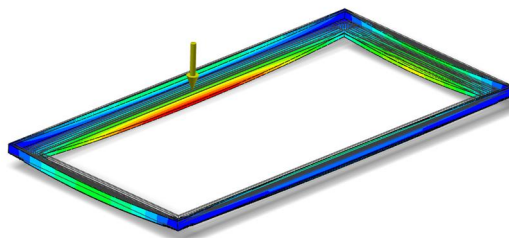
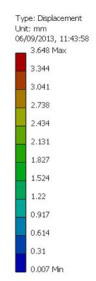
Standard connection to fire panels.
Optional extra for connection to
Building Management System (BMS)

Detail A
Mechanism detail view

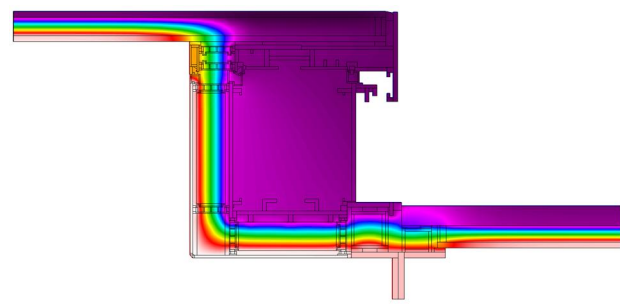
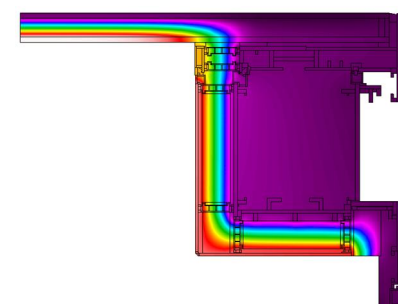


Synchronised electro-mechanical opening
mechanisms offering clear front opening

**FEA MODELLED FOR
STRUCTURAL INTEGRITY**



**THERMALLY MODELLED FOR INDUSTRY
LEADING EFFICIENCY**



**REQUIRES WEATHERED KERB
(NOT SUPPLIED)
REFER TO DRAWINGS:
405-ASS-409
405-ASS-410
FOR DETAILS**

GLAZING VISION
Saw Mills Road
Diss
Norfolk
IP22 4RG
Tel: +44 (0)333 8000 881
Fax: +44 (0)333 8000 882
Email: sales@glazingvision.co.uk
Website: www.glazingvision.co.uk

IT IS GLAZING VISION'S POLICY TO CONTINUOUSLY DEVELOP AND IMPROVE OUR PRODUCTS. WE THEREFORE RESERVE THE RIGHT TO MODIFY OR CHANGE THE DETAIL DESIGN AT OUR DISCRETION AND WITHOUT PRIOR NOTICE. THIS DRAWING IS COPYRIGHT AND THE SOLE PROPERTY OF GLAZING VISION LTD. THE DESIGNS/INFORMATION IT CONTAINS ARE PRIVATE AND CONFIDENTIAL. IT MUST NOT BE COPIED, EXHIBITED OR COMMUNICATED TO THIRD PARTIES FOR ANY PURPOSE OTHER THAN THAT FOR WHICH IT WAS ISSUED WITHOUT THE WRITTEN PERMISSION OF GLAZING VISION LTD.

Third angle projection unless otherwise noted.
Tolerances:
Whole numbers = ±1mm
One decimal place = ±0.5mm
Two decimal places = ±0.2mm
All angles 90±0.5 degrees unless specified
IF IN DOUBT - ASK! DO NOT SCALE
Supplier to deburr & remove sharp corners

Rev	Revision Description	Drawn/Date
-	Initial release	JWL 12.02.14

Product: 405 GV Integrated X-Vent		Checked By: PGW
Description: Product overview (Integrated)		
Materials: N/A	Drawn By: JWL	Check Date: 12.02.14
Finish: N/A	Drawn Date: 12.02.14	
Weight: N/A	Quantity: N/A	Drawing No: 405-ASS-408
Scale: NTS		