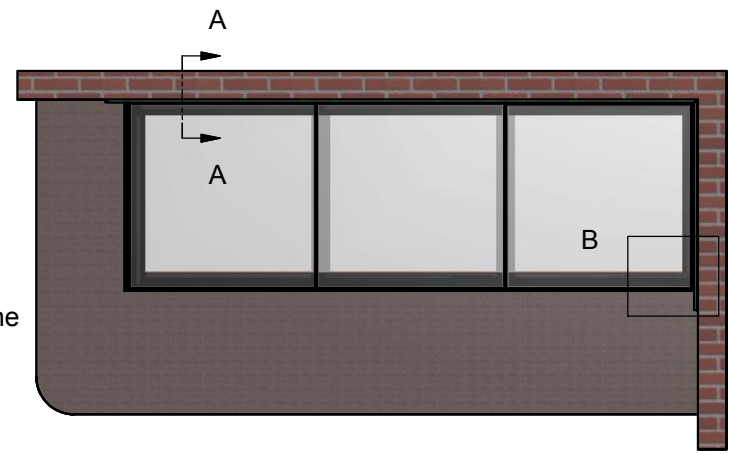
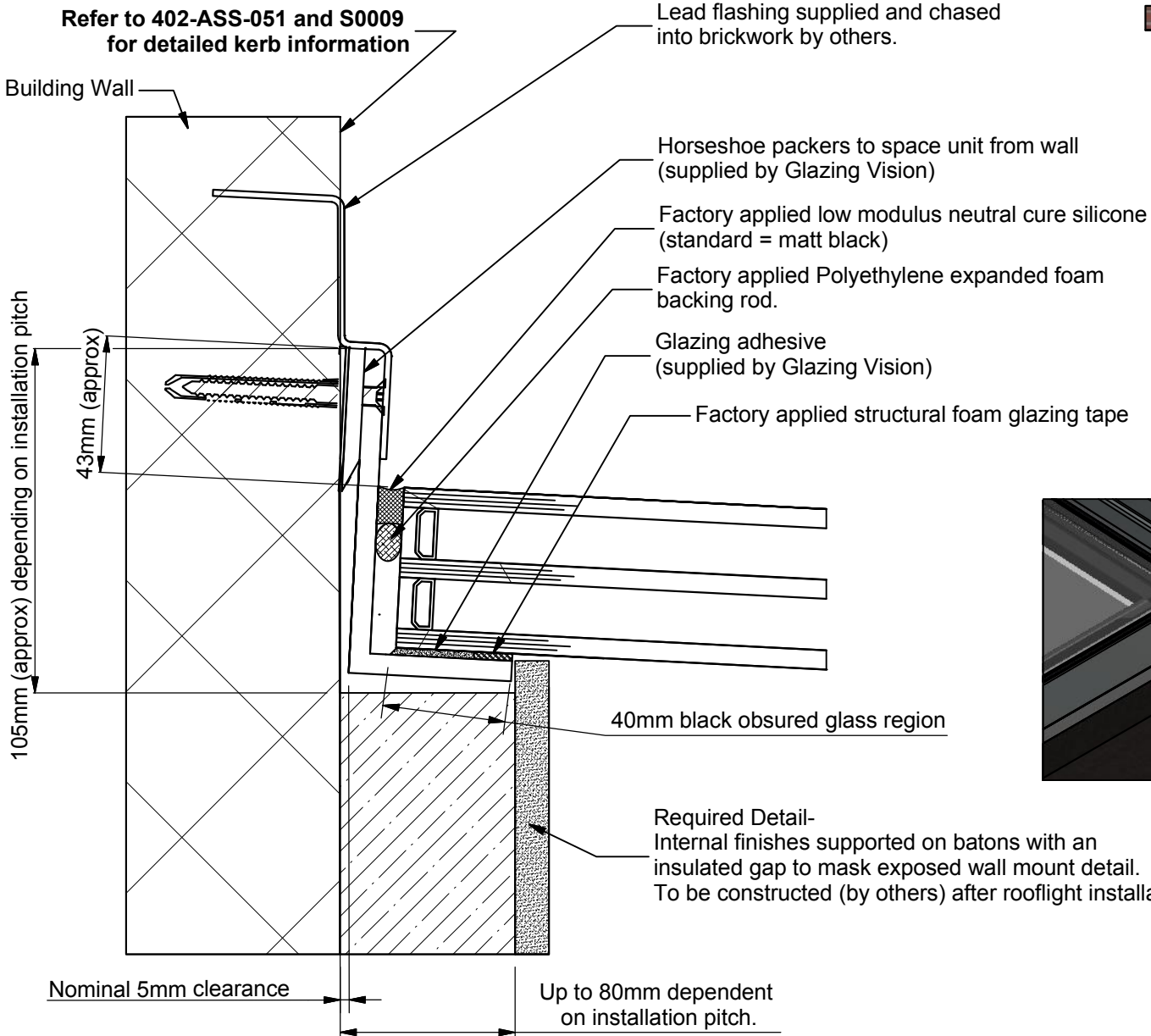


Section A-A (Scale 1 : 2)



Detail B (Scale 1 : 10)



NOTE: Weathering flashing (by others)

* Wall **must** extend a minimum of 150mm beyond outside face of kerb to ensure correct weathering. (see detail above)

GLAZING VISION

Saw Mills Road
Diss
Norfolk
IP22 4RG

Tel: +44 (0)333 8000 881
Fax: +44 (0)333 8000 882
Email: sales@glazingvision.co.uk
Website: www.glazingvision.co.uk

IT IS GLAZING VISION'S POLICY TO CONTINUOUSLY DEVELOP AND IMPROVE OUR PRODUCTS. WE THEREFORE RESERVE THE RIGHT TO MODIFY OR CHANGE THE DETAIL DESIGN AT OUR DISCRETION AND WITHOUT PRIOR NOTICE. THIS DRAWING IS COPYRIGHT AND THE SOLE PROPERTY OF GLAZING VISION LTD. THE DESIGNS/INFORMATION IT CONTAINS ARE PRIVATE AND CONFIDENTIAL. IT MUST NOT BE COPIED, EXHIBITED OR COMMUNICATED TO THIRD PARTIES FOR ANY PURPOSE OTHER THAN THAT FOR WHICH IT WAS ISSUED WITHOUT THE WRITTEN PERMISSION OF GLAZING VISION LTD.

Third angle projection unless otherwise noted.
Tolerances:
Whole numbers = ±1mm
One decimal place = ±0.5mm
Two decimal places = ±0.2mm
All angles 90±0.5 degrees unless specified
IF IN DOUBT - ASK! DO NOT SCALE
Supplier to deburr & remove sharp corners

Rev	Revision Description	Drawn/Date
F	Wall abutment details changed. Clip-on cover removed	SW 16.07.2015
G	'Internal Finishes' note amended	SW 03.08.16

Product: 402-Flushglaze		Checked By: JWL
Description: Triple glaze flushglaze with silicone joints		
Materials: N/A		Check Date: 03.08.2016
Finish: N/A		
Weight: N/A		
Quantity: N/A		
Scale: 1:2 @ A4		Drawn By: SW Drawn Date: 16.07.2015
Drawing No: 402-ASS-039		