

**Section A-A**  
**(Scale 1 : 2)**

Double glazed fire rated unit comprising:  
6mm Clear toughened outer pane with  
low E coating, 20mm Steel spacer  
19mm Laminated fire rated inner pane

Factory applied ceramic tape  
Factory applied dual hardness  
black EPDM bubble gasket

Glazing Vision optional extra  
kerb top feature, refer to  
drawing S0011 for details

Kerb internal finishes (by others).  
Construction needs to provide  
sufficient fire resistance

Refer to 402-ASS-051 and S0009  
for detailed kerb information

77mm black obscured  
glass region

Factory applied fire rated silicone

Factory applied ceramic wool  
(8mm gap)

Site applied fire rated silicone  
(supplied by Glazing Vision)

Site applied ceramic tape  
(supplied by Glazing Vision)

Installation packers fitted during  
installation (supplied by Glazing Vision)

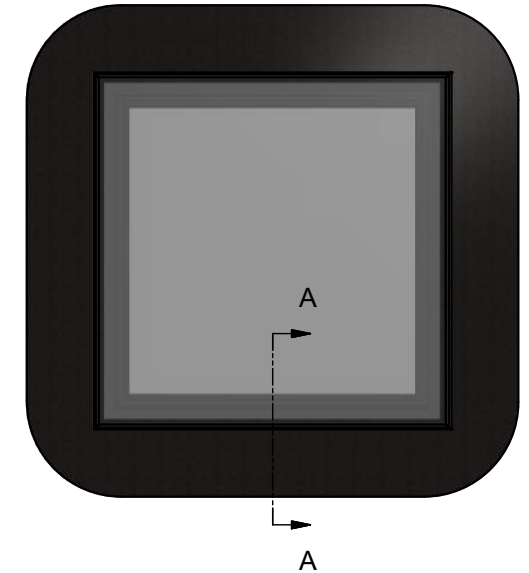
Powder coated aluminium clip on  
cover to hide kerb fixings  
(supplied by Glazing Vision)

Stainless steel structural fixing  
(supplied by Glazing Vision)

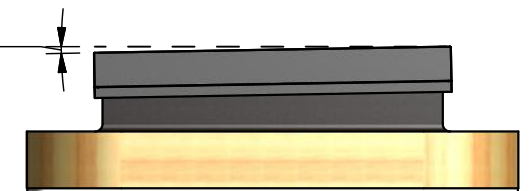
59mm

150mm MIN

Nominal clearance 10mm



**Kerb pitch**  
minimum = 3°  
recommended = 5°  
Maximum = 70°



**GLAZING VISION**

Saw Mills Road  
Diss  
Norfolk  
IP22 4RG

Tel: +44 (0)333 8000 881  
Fax: +44 (0)333 8000 882  
Email: sales@glazingvision.co.uk  
Website: www.glazingvision.co.uk

IT IS GLAZING VISION'S POLICY TO CONTINUOUSLY DEVELOP AND IMPROVE OUR PRODUCTS. WE THEREFORE RESERVE THE RIGHT TO MODIFY OR CHANGE THE DETAIL DESIGN AT OUR DISCRETION AND WITHOUT PRIOR NOTICE. THIS DRAWING IS COPYRIGHT AND THE SOLE PROPERTY OF GLAZING VISION LTD. THE DESIGNS/INFORMATION IT CONTAINS ARE PRIVATE AND CONFIDENTIAL. IT MUST NOT BE COPIED, EXHIBITED OR COMMUNICATED TO THIRD PARTIES FOR ANY PURPOSE OTHER THAN THAT FOR WHICH IT WAS ISSUED WITHOUT THE WRITTEN PERMISSION OF GLAZING VISION LTD.

Third angle projection unless otherwise noted.  
Tolerances:  
Whole numbers = ±1mm  
One decimal place = ±0.5mm  
Two decimal places = ±0.2mm  
All angles 90±0.5 degrees unless specified  
**IF IN DOUBT - ASK! DO NOT SCALE**  
**Supplier to deburr & remove sharp corners**

Rev	Revision Description	Drawn/Date
H	Re-drawn Inventor/Vault and updated extrusion	JamesB 15.01.13
I	Corrected drawing description to fire rated FG, kerb top trim cut back to gasket, updated border, added black to gasket description	JamesB 22.01.14

<b>Product:</b> 402 - GV Standard Flushglaze		<b>Checked By:</b>
<b>Description:</b> Fire rated Flushglaze kerb mount detail		
<b>Materials:</b> See above		<b>Check Date:</b>
<b>Finish:</b> Std = RAL7015 Grey, Matt	<b>Drawn By:</b> JamesB	
<b>Weight:</b> N/A	<b>Drawn Date:</b> 15.01.13	
<b>Quantity:</b> N/A	<b>Drawing No:</b> 402-ASS-023	
<b>Scale:</b> 1:2 @ A4		