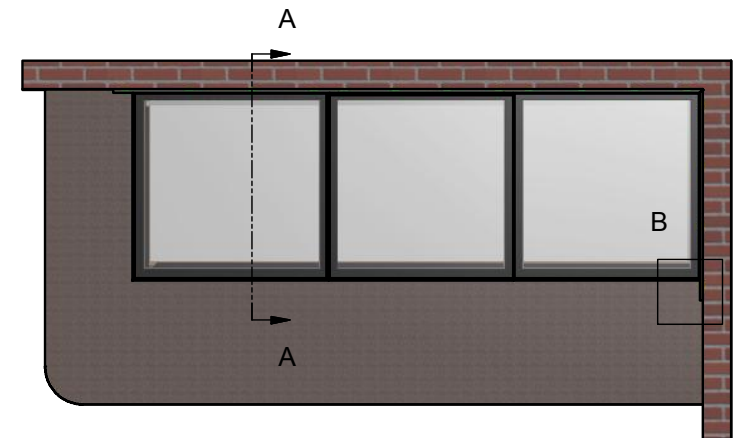
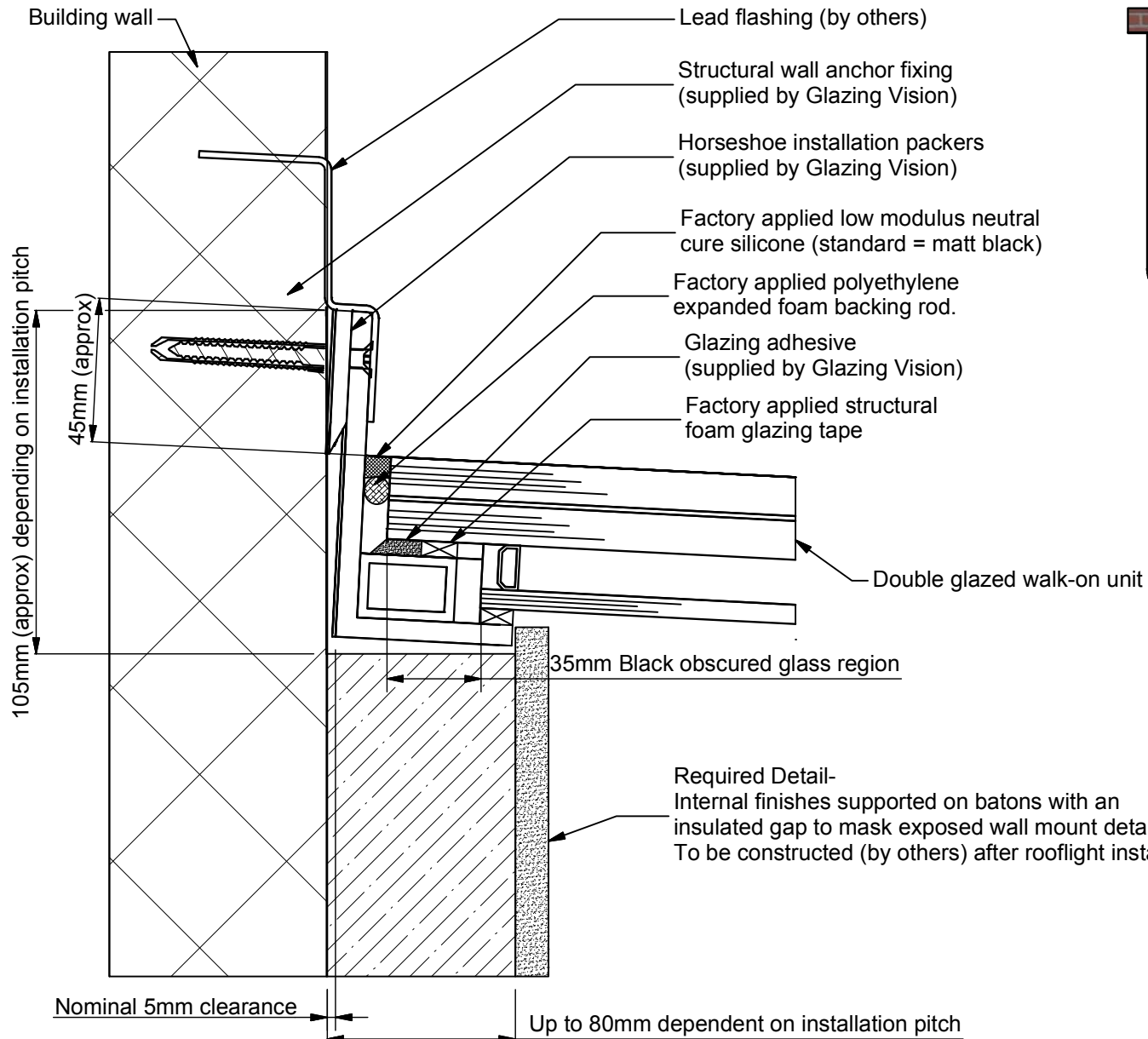


# Section A-A ( Scale 1 : 2 )



**Detail B ( Scale 1:10 )**



NOTE: Weathering flashing (by others) not shown above for clarity of Glazing Vision detail

\*Wall **must** extend a minimum of 150mm beyond outside face of kerb to ensure correct weathering (see detail above)

**GLAZING VISION**

Saw Mills Road  
Diss  
Norfolk  
IP22 4RG

Tel: +44 (0)333 8000 881  
Fax: +44 (0)333 8000 882  
Email: sales@glazingvision.co.uk  
Website: www.glazingvision.co.uk

IT IS GLAZING VISION'S POLICY TO CONTINUOUSLY DEVELOP AND IMPROVE OUR PRODUCTS. WE THEREFORE RESERVE THE RIGHT TO MODIFY OR CHANGE THE DETAIL DESIGN AT OUR DISCRETION AND WITHOUT PRIOR NOTICE. THIS DRAWING IS COPYRIGHT AND THE SOLE PROPERTY OF GLAZING VISION LTD. THE DESIGNS/INFORMATION IT CONTAINS ARE PRIVATE AND CONFIDENTIAL. IT MUST NOT BE COPIED, EXHIBITED OR COMMUNICATED TO THIRD PARTIES FOR ANY PURPOSE OTHER THAN THAT FOR WHICH IT WAS ISSUED WITHOUT THE WRITTEN PERMISSION OF GLAZING VISION LTD.

Third angle projection unless otherwise noted.  
Tolerances:  
Whole numbers = ±1mm  
One decimal place = ±0.5mm  
Two decimal places = ±0.2mm  
All angles 90±0.5 degrees unless specified  
**IF IN DOUBT - ASK! DO NOT SCALE**  
**Supplier to deburr & remove sharp corners**

Rev	Revision Description	Drawn/Date
O	'Internal finishes' note amended	SW 03.08.2016
N	Description changed to fall in line with description in data sheet	SW 11.04.16

<b>Product:</b> 402-Flushglaze		<b>Checked By:</b> JWL
<b>Description:</b> Walk-on Flushglaze multipart		
<b>Materials:</b> N/A		<b>Check Date:</b> 03.08.16
<b>Finish:</b> N/A		
<b>Weight:</b> N/A		<b>Drawn By:</b> SW <b>Drawn Date:</b> 16.07.2015
<b>Quantity:</b> N/A		
<b>Scale:</b> 1:2, 1:10 & 1:40		<b>Drawing No:</b> 402-ASS-008