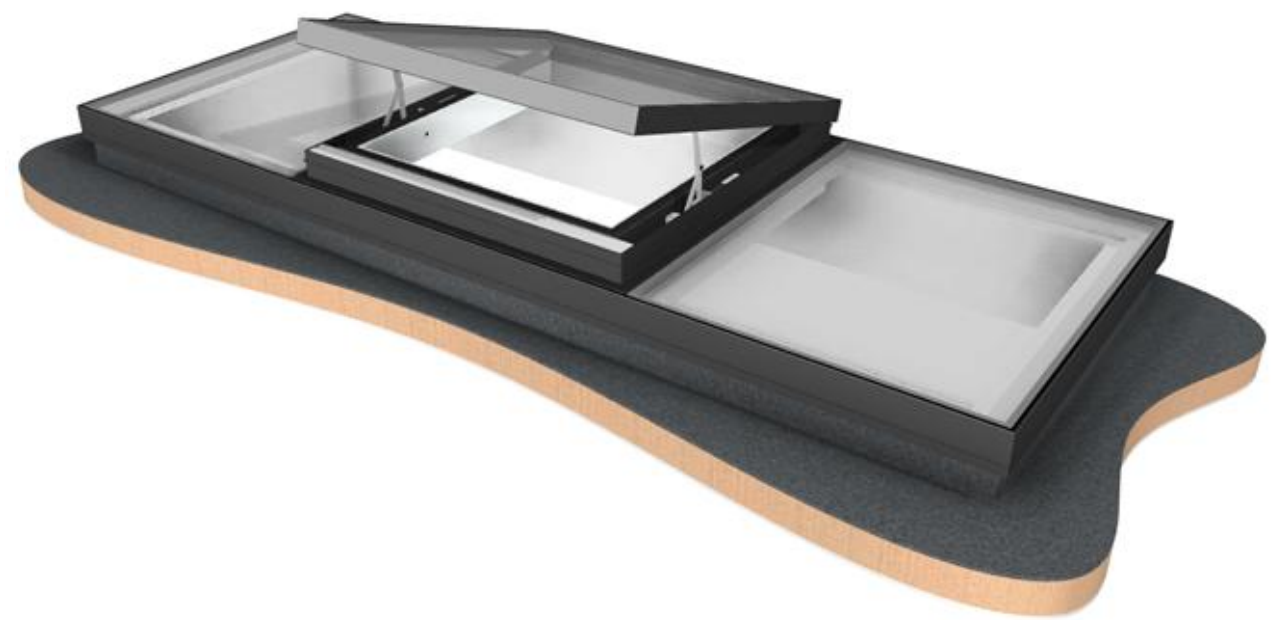
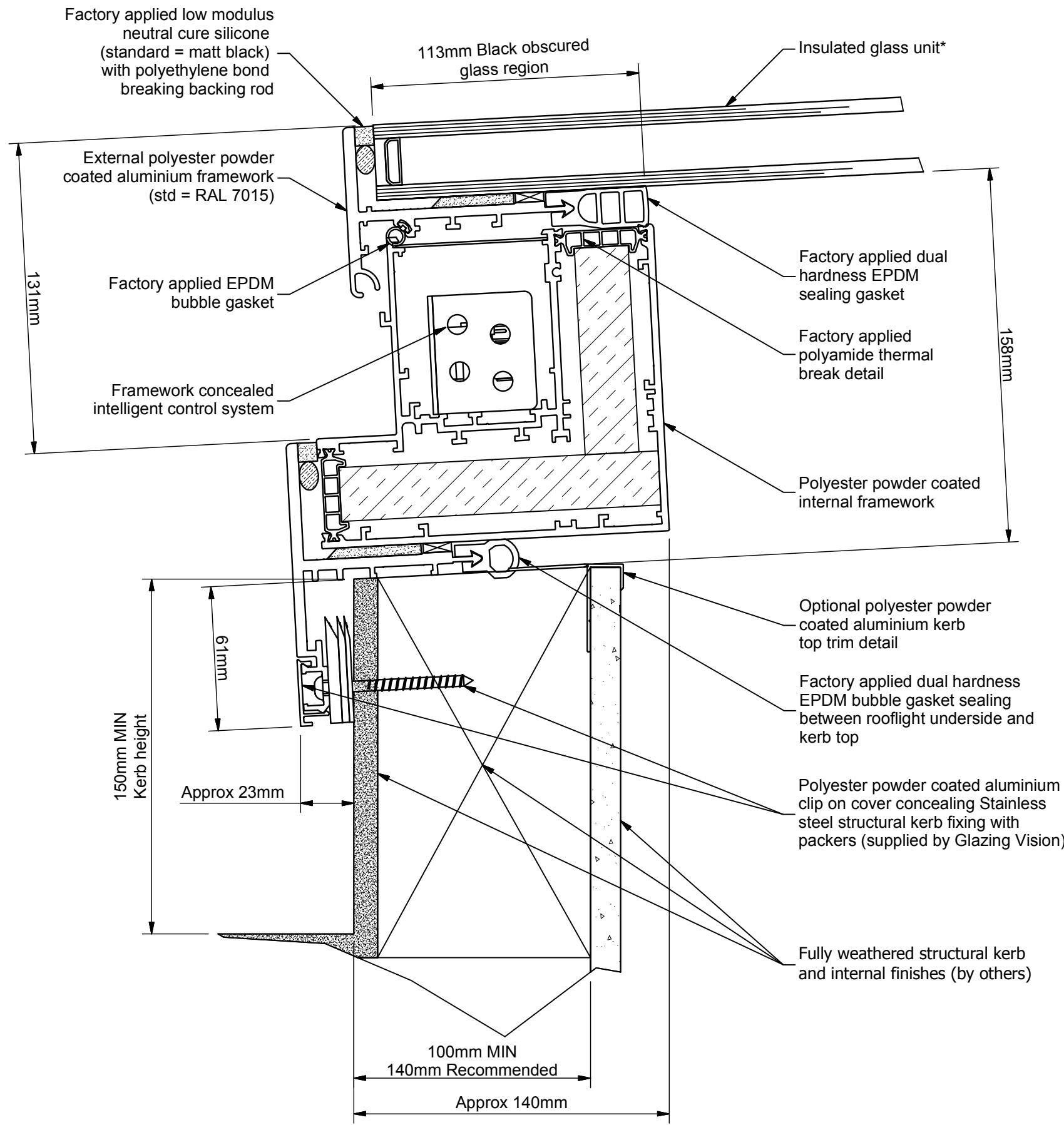
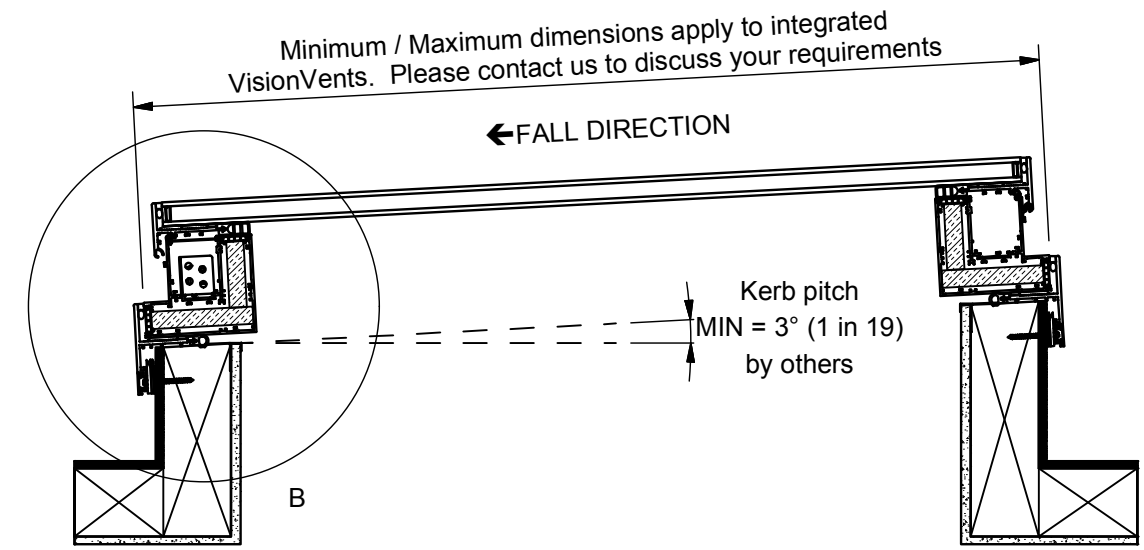


Detail B (Scale 1 : 2)



This drawing depicts a generic configuration. Various options are available including adjacent venting sections. Please contact Glazing Vision for further details.

Section B-B (Scale 1 : 10)
reference 401-ASS-406



*Specification dependent on vent area and client options
Design patented: GB2514119

GLAZING VISION
Saw Mills Road
Diss
Norfolk
IP22 4RG
Tel: +44 (0)333 8000 881
Fax: +44 (0)333 8000 882
Email: sales@glazingvision.co.uk
Website: www.glazingvision.co.uk

IT IS GLAZING VISION'S POLICY TO CONTINUOUSLY DEVELOP AND IMPROVE OUR PRODUCTS. WE THEREFORE RESERVE THE RIGHT TO MODIFY OR CHANGE THE DETAIL DESIGN AT OUR DISCRETION AND WITHOUT PRIOR NOTICE. THIS DRAWING IS COPYRIGHT AND THE SOLE PROPERTY OF GLAZING VISION LTD. THE DESIGNS/INFORMATION IT CONTAINS ARE PRIVATE AND CONFIDENTIAL. IT MUST NOT BE COPIED, EXHIBITED OR COMMUNICATED TO THIRD PARTIES FOR ANY PURPOSE OTHER THAN THAT FOR WHICH IT WAS ISSUED WITHOUT THE WRITTEN PERMISSION OF GLAZING VISION LTD.

Third angle projection unless otherwise noted.
Tolerances:
Whole numbers = ±1mm
One decimal place = ±0.5mm
Two decimal places = ±0.2mm
All angles 90±0.5 degrees unless specified
IF IN DOUBT - ASK! DO NOT SCALE
Supplier to deburr & remove sharp corners

Rev	Revision Description	Drawn/Date	Product: GV Standard VisionVent	Checked By:
-	Initial release	JamesB 06.12.13	Description: Integrated VisionVent	JWL
A	Patent no. added	JSL 10.10.16	Materials: As above Finish: N/A Weight: N/A Quantity: N/A Scale: As above	Check Date: 10.10.16
			Drawn By: JamesB Drawn Date: 06.12.13 Drawing No: 401-ASS-408	