

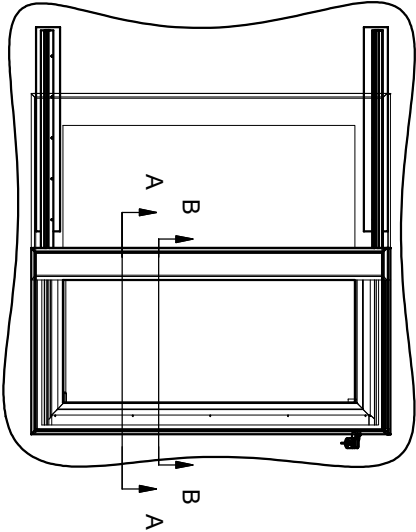


Third angle projection unless otherwise stated

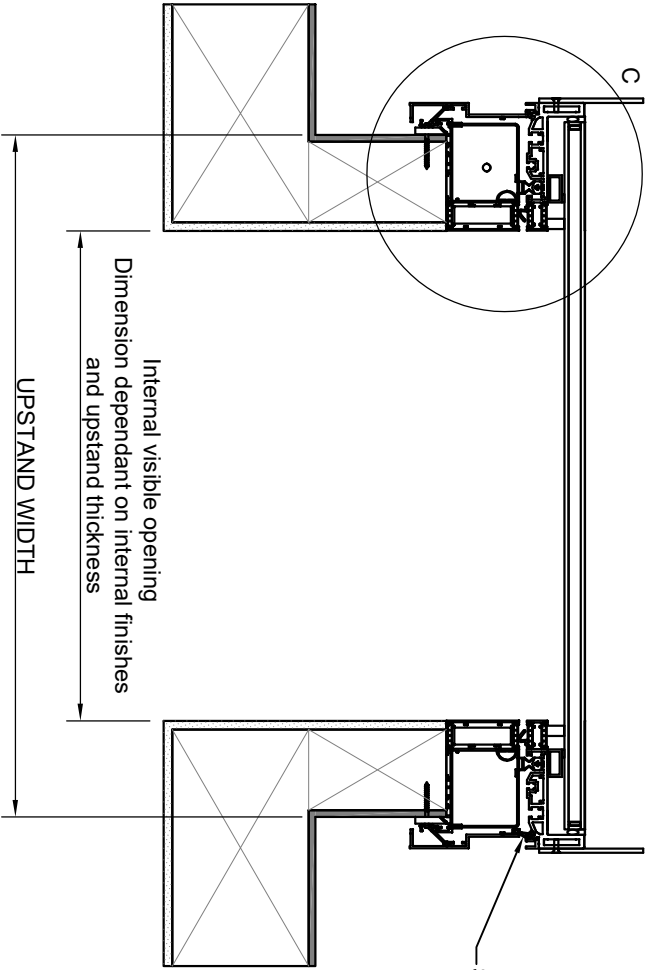
THIS IS A STANDARD DRAWING. THE UNIT PURCHASED MAY VARY. THIS DRAWING DOES NOT INDICATE ACCURATE DIMENSIONS FOR ANY EXISTING STRUCTURAL COMPONENTS OR PRODUCTS.

DO NOT USE THIS DRAWING FOR ANY SITE LAYOUTS. ON-SITE PERSONNEL ARE RESPONSIBLE TO CONFIRM DRAWINGS VS SPECIFIC SITE CONDITIONS.

Plan view showing open and closed positions



Section A-A
(Closed position)



Silicone seals with non-friction coating (black)

Insulated glazed unit*

Polyester powder coated aluminium fin
(omitted on small units)

Factory applied low modulus
neutral cure silicone
(standard = matt black)
with polyethylene expanded
foam backing rod

Factory applied structural glazing
tape and adhesive seal

Insulating foam packing (black)

Structurally bonded aluminium box section

Polyester powder coated aluminium
external framework
(standard = RAL 7015 slate grey)

Polyester powder coated aluminium internal framework
(standard = RAL 9010 pure white)

Cable trunking

Polyamide thermal breaks
with factory applied PIR insulation

Site applied silicone seal
(supplied by Glazing Vision)

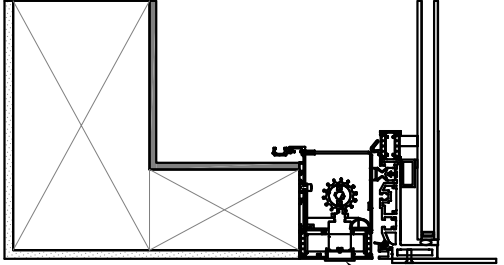
Control cover flashing
with rubber edging strip

Brush seal

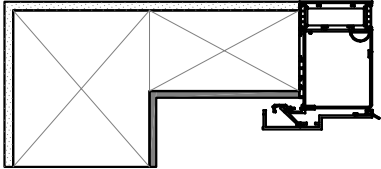
Site applied structural upstand fixings and
spacers (supplied by Glazing Vision)

Fully weathered structural upstand
and internal finishes (by others)

Section B-B
(Open position)



Removable plug (white) for access to motor override
Allows unit to be manually operated in an emergency
e.g. if mains supply is disconnected and batteries run
flat.



*Glazed unit specification dependent on client options and glazing area

ESTIMATED WEIGHT		SCALE	Not to scale	
REVISION	DESCRIPTION	NAME/DATE	NAME/DATE	
-	Initial Release	JSL 26 May 2022		
A	Fin updated to cover all standard sizes	RJ 29 Jun 2022		
PROJECT			CHECKED	
Sliding Over Roof				
TITLE / DESCRIPTION				
Double Glazed Section Through Width			-	
DRAWING NO.			SHEET	
602-SDD-UK-008			1 OF 1	