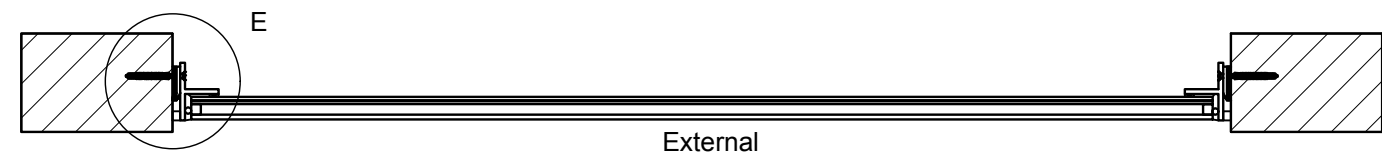
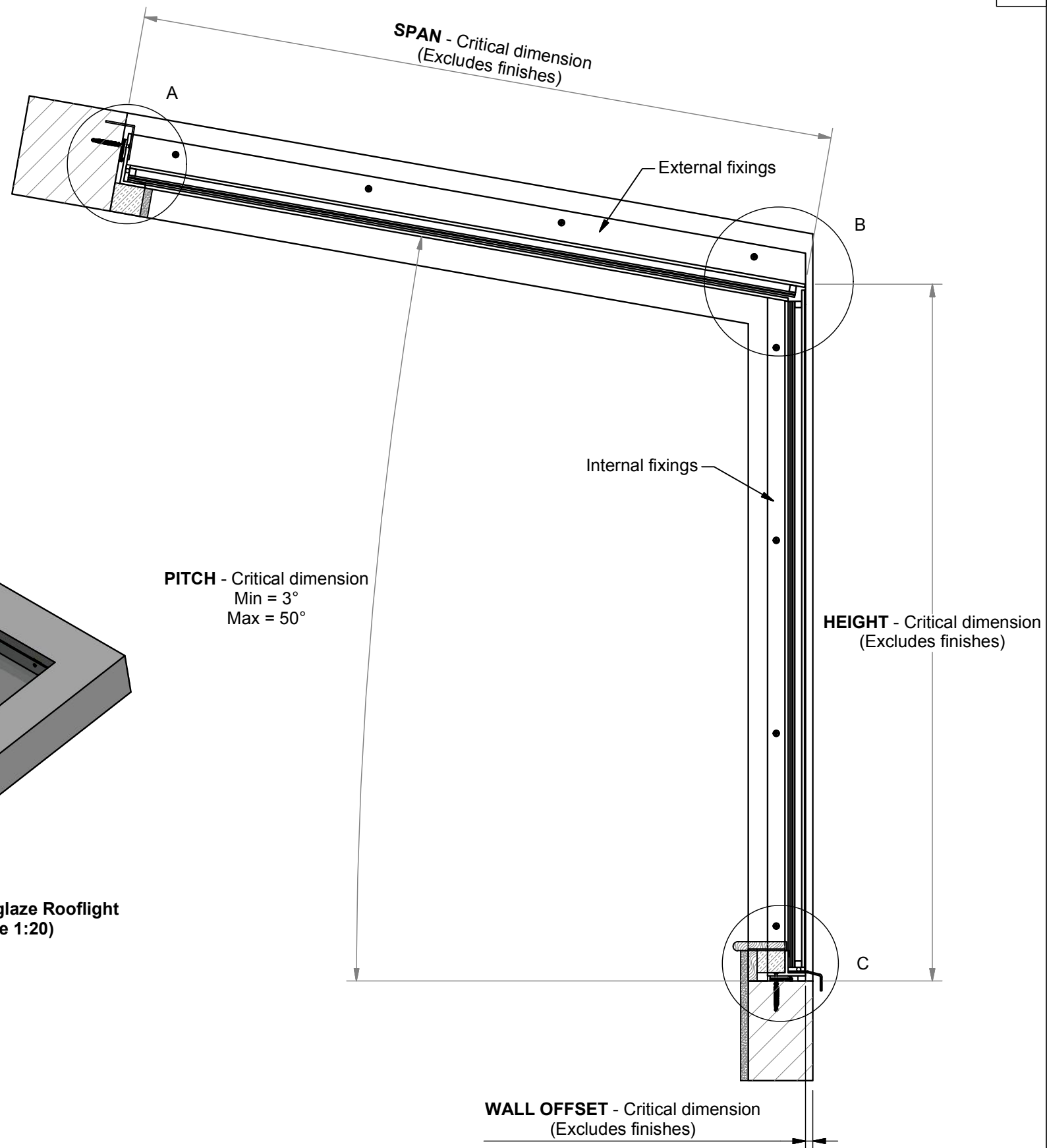
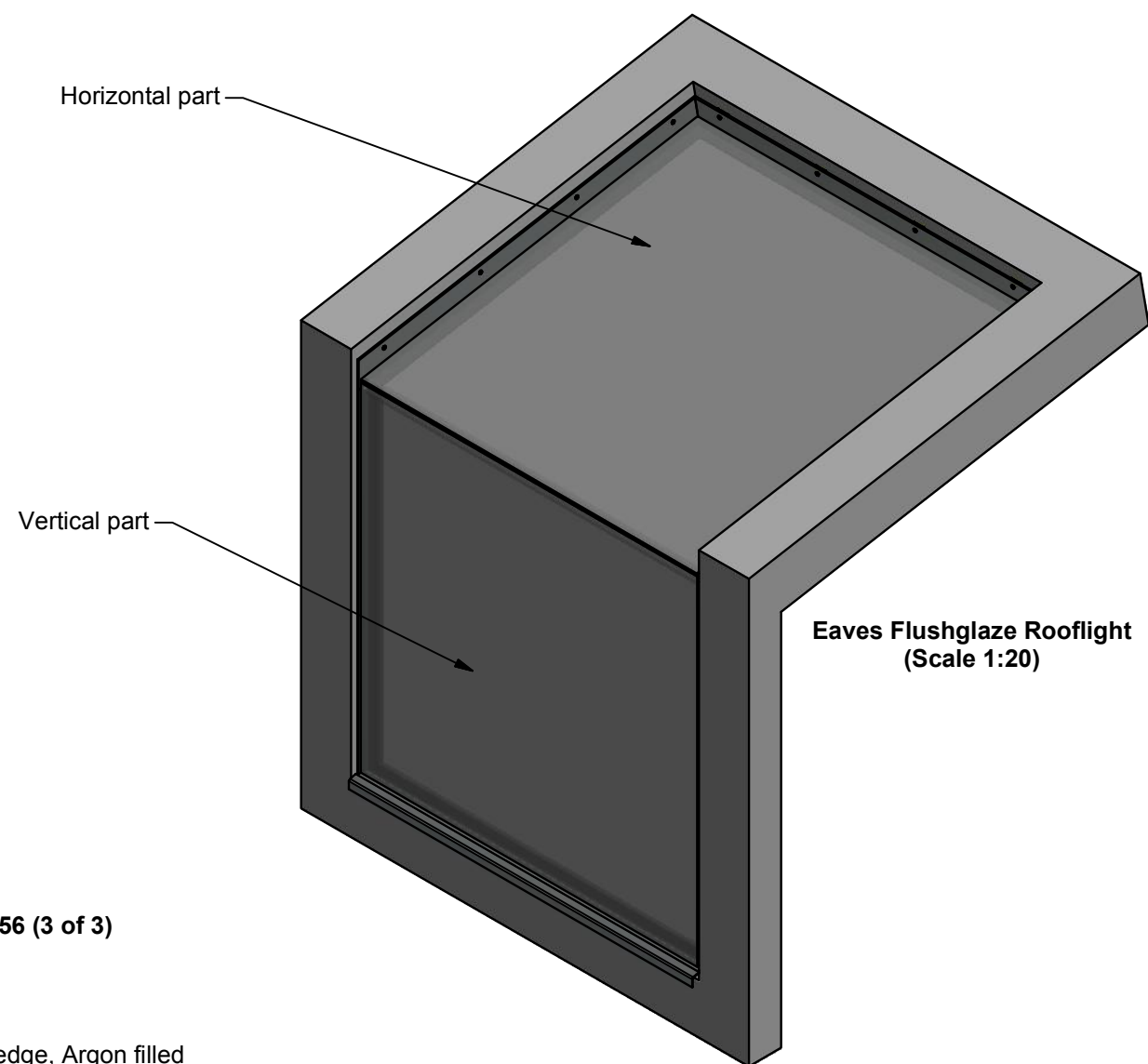


Section through horizontal part



Section through vertical part

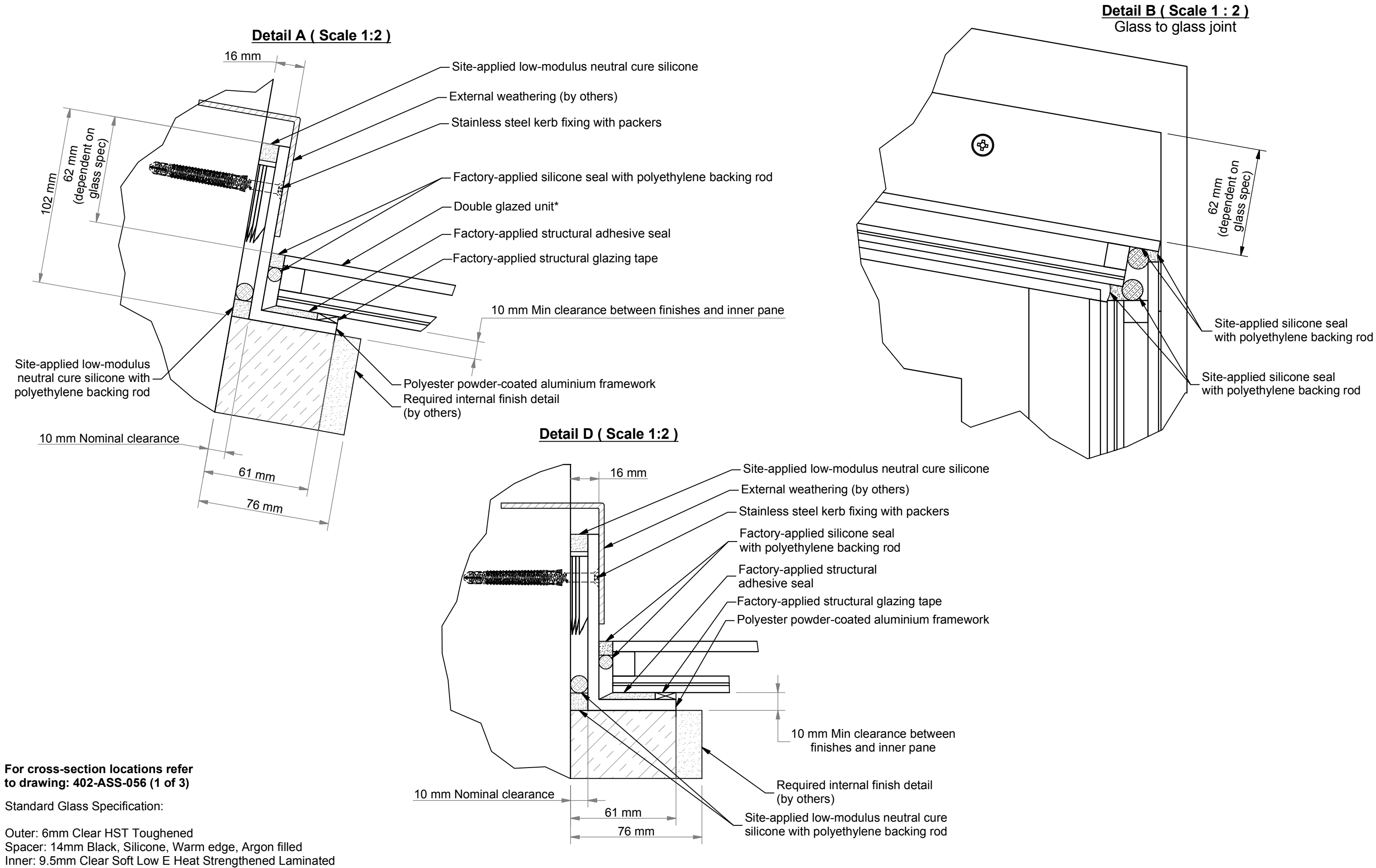


For detail views refer to drawings:
402-ASS-056 (2 of 3) and 402-ASS-056 (3 of 3)

Standard Glass Specification:

Outer: 6mm Clear HST Toughened
Spacer: 14mm Black, Silicone, Warm edge, Argon filled
Inner: 9.5mm Clear Soft Low E Heat Strengthened Laminated

<div><div><div>GLAZING VISION</div></div><div><div>Saw Mills Road Diss Norfolk IP22 4RG</div><div>Tel: +44 (0)333 8000 881 Fax: +44 (0)333 8000 882 Email: sales@glazingvision.co.uk Website: www.glazingvision.co.uk</div></div></div>	IT IS GLAZING VISION'S POLICY TO CONTINUOUSLY DEVELOP AND IMPROVE OUR PRODUCTS. WE THEREFORE RESERVE THE RIGHT TO MODIFY OR CHANGE THE DETAIL DESIGN AT OUR DISCRETION AND WITHOUT PRIOR NOTICE. THIS DRAWING IS COPYRIGHT AND THE SOLE PROPERTY OF GLAZING VISION LTD. THE DESIGNS/INFORMATION IT CONTAINS ARE PRIVATE AND CONFIDENTIAL. IT MUST NOT BE COPIED, EXHIBITED OR COMMUNICATED TO THIRD PARTIES FOR ANY PURPOSE OTHER THAN THAT FOR WHICH IT WAS ISSUED WITHOUT THE WRITTEN PERMISSION OF GLAZING VISION LTD.	Third angle projection unless otherwise noted. Tolerances: Whole numbers = ±1mm One decimal place = ±0.5mm Two decimal places = ±0.2mm All angles 90±0.5 degrees unless specified IF IN DOUBT - ASK! DO NOT SCALE Supplier to deburr & remove sharp corners	Rev	Revision Description	Drawn/ Date	Product: 402 - GV Standard Eaves Flushglaze		Checked By:	
			D	Measurement locations changed. Framework change to vertical section.	JWL 25.01.17	Description: Eaves Flushglaze		JWL	
						Materials: N/A		Check Date:	
			E	Vertical/horizontal views ammended	HL 22.05.17	Finish: N/A	Drawn By: JWL	22.05.17	
						Weight: N/A	Drawn Date: 25.01.17		
						Quantity: N/A			Drawing No: 402-ASS-056 (1 of 3)
						Scale: 1:25 & 1:10			



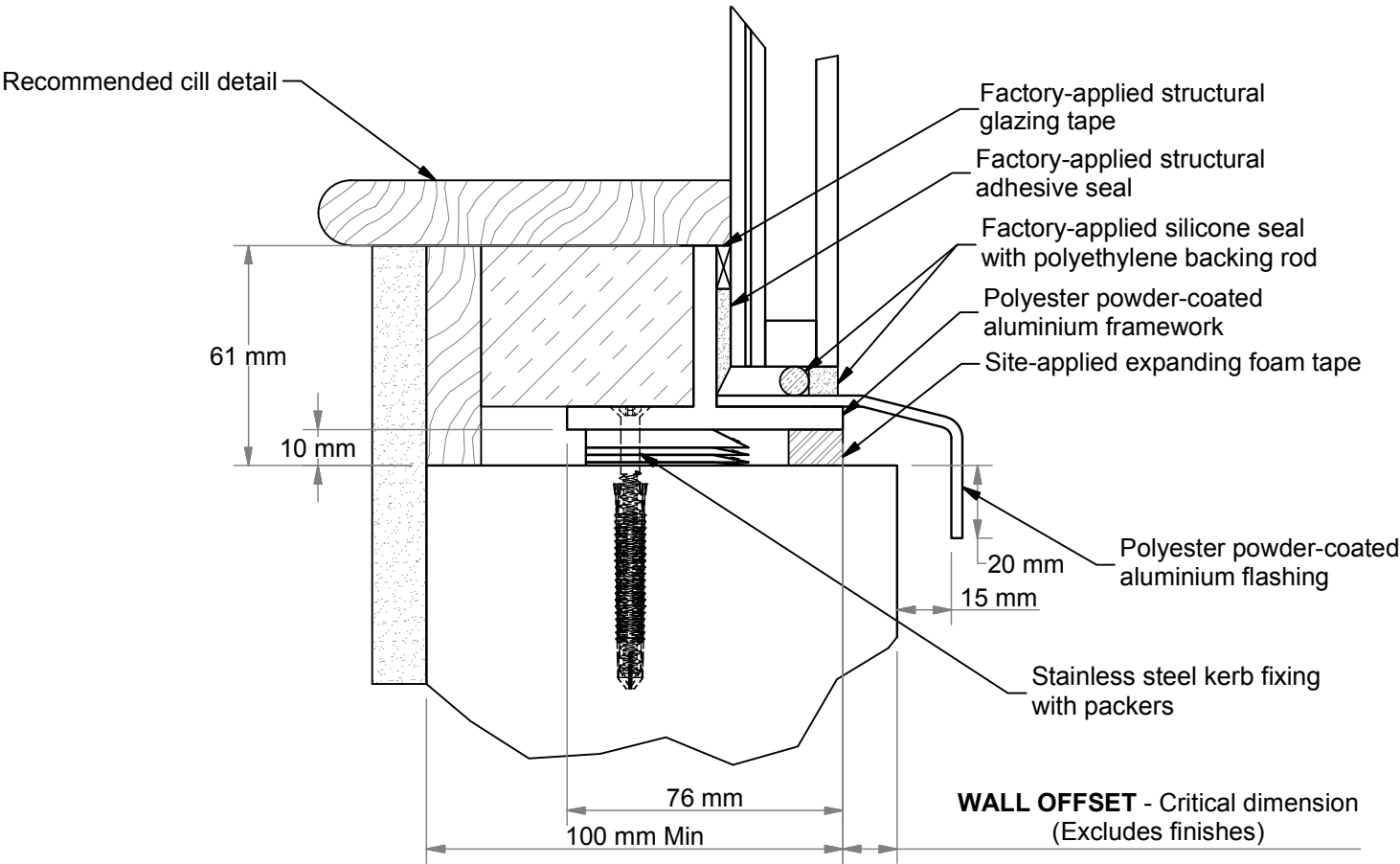
For cross-section locations refer to drawing: 402-ASS-056 (1 of 3)

Standard Glass Specification:

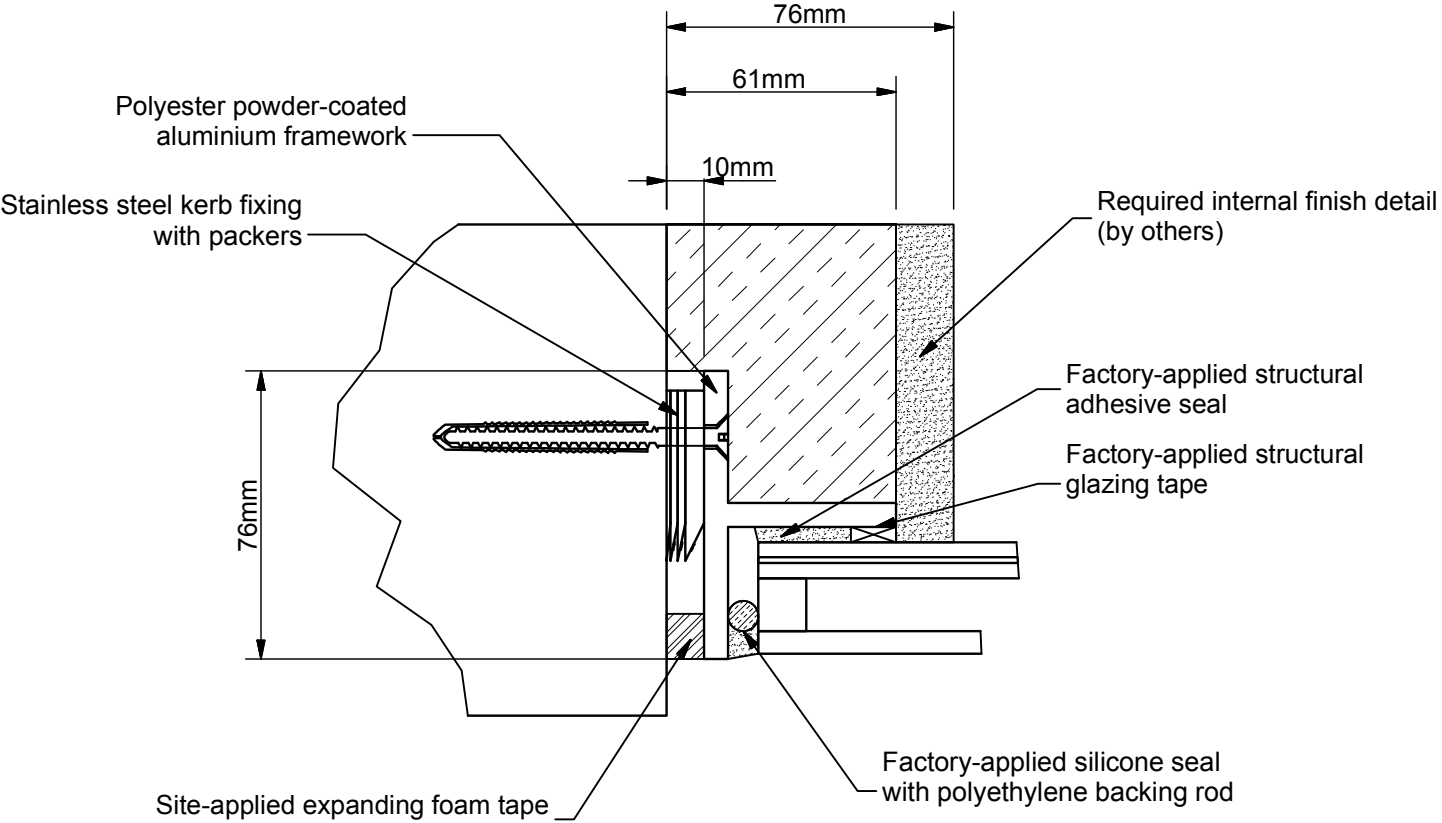
Outer: 6mm Clear HST Toughened
Spacer: 14mm Black, Silicone, Warm edge, Argon filled
Inner: 9.5mm Clear Soft Low E Heat Strengthened Laminated

<div><div>GLAZING VISION</div><div>Saw Mills Road Diss Norfolk IP22 4RG</div><div>Tel: +44 (0)333 8000 881 Fax: +44 (0)333 8000 882 Email: sales@glazingvision.co.uk Website: www.glazingvision.co.uk</div></div>	IT IS GLAZING VISION'S POLICY TO CONTINUOUSLY DEVELOP AND IMPROVE OUR PRODUCTS. WE THEREFORE RESERVE THE RIGHT TO MODIFY OR CHANGE THE DETAIL DESIGN AT OUR DISCRETION AND WITHOUT PRIOR NOTICE. THIS DRAWING IS COPYRIGHT AND THE SOLE PROPERTY OF GLAZING VISION LTD. THE DESIGNS/INFORMATION IT CONTAINS ARE PRIVATE AND CONFIDENTIAL. IT MUST NOT BE COPIED, EXHIBITED OR COMMUNICATED TO THIRD PARTIES FOR ANY PURPOSE OTHER THAN THAT FOR WHICH IT WAS ISSUED WITHOUT THE WRITTEN PERMISSION OF GLAZING VISION LTD.	Third angle projection unless otherwise noted. Tolerances: Whole numbers = ±1mm One decimal place = ±0.5mm Two decimal places = ±0.2mm All angles 90±0.5 degrees unless specified IF IN DOUBT - ASK! DO NOT SCALE Supplier to deburr & remove sharp corners	Rev	Revision Description	Drawn/ Date	Product: 402 - GV Standard Eaves Flushglaze		Checked By:
			D	Measurement locations changed. Framework change to vertical section	JWL 25.01.17	Description: Eaves Flushglaze		JWL
				E	Vertical/horizontal views ammended	HL 22.05.17	Materials: N/A	
			Finish: N/A		Drawn By: JWL	22.05.17		
					Weight: N/A		Drawn Date: 25.01.17	
					Quantity: N/A		Drawing No: 402-ASS-056 (2 of 3)	
			Scale: 1:2					

Detail C (Scale 1:2)



Detail E (Scale 1 : 2)



For cross-section locations refer to drawing: 402-ASS-056 (1 of 3)

Standard Glass Specification:

Outer: 6mm Clear HST Toughened

Spacer: 14mm Black, Silicone, Warm edge, Argon filled

Inner: 9.5mm Clear Soft Low E Heat Strengthened Laminated

<div><div>GLAZING VISION</div><div>Saw Mills Road Diss Norfolk IP22 4RG</div><div>Tel: +44 (0)333 8000 881 Fax: +44 (0)333 8000 882 Email: sales@glazingvision.co.uk Website: www.glazingvision.co.uk</div></div>	IT IS GLAZING VISION'S POLICY TO CONTINUOUSLY DEVELOP AND IMPROVE OUR PRODUCTS. WE THEREFORE RESERVE THE RIGHT TO MODIFY OR CHANGE THE DETAIL DESIGN AT OUR DISCRETION AND WITHOUT PRIOR NOTICE. THIS DRAWING IS COPYRIGHT AND THE SOLE PROPERTY OF GLAZING VISION LTD. THE DESIGNS/INFORMATION IT CONTAINS ARE PRIVATE AND CONFIDENTIAL. IT MUST NOT BE COPIED, EXHIBITED OR COMMUNICATED TO THIRD PARTIES FOR ANY PURPOSE OTHER THAN THAT FOR WHICH IT WAS ISSUED WITHOUT THE WRITTEN PERMISSION OF GLAZING VISION LTD.	Third angle projection unless otherwise noted. Tolerances: Whole numbers = ±1mm One decimal place = ±0.5mm Two decimal places = ±0.2mm All angles 90±0.5 degrees unless specified IF IN DOUBT - ASK! DO NOT SCALE Supplier to deburr & remove sharp corners	Rev	Revision Description	Drawn/ Date	Product: 402 - GV Standard Eaves Flushglaze		Checked By:	
			D	Measurement locations changed. Framework change to vertical section	JWL 25.01.17	Description: Eaves Flushglaze		JWL	
						Materials: N/A			
			E	Vertical/horizontal views ammended	HL 22.05.17	Finish: N/A	Drawn By: JWL	22.05.17	
						Weight: N/A	Drawn Date: 25.01.17		
						Quantity: N/A			Drawing No: 402-ASS-056 (3 of 3)
						Scale: 1:2			